

# Louisiana Department of Public Safety and Corrections

## PREA Annual Report 2012 - §115.88

All PREA allegations are tracked through a secure database and which can be accessed by State Prisons, “Institutions”. Two of these Institutions are privately owned.

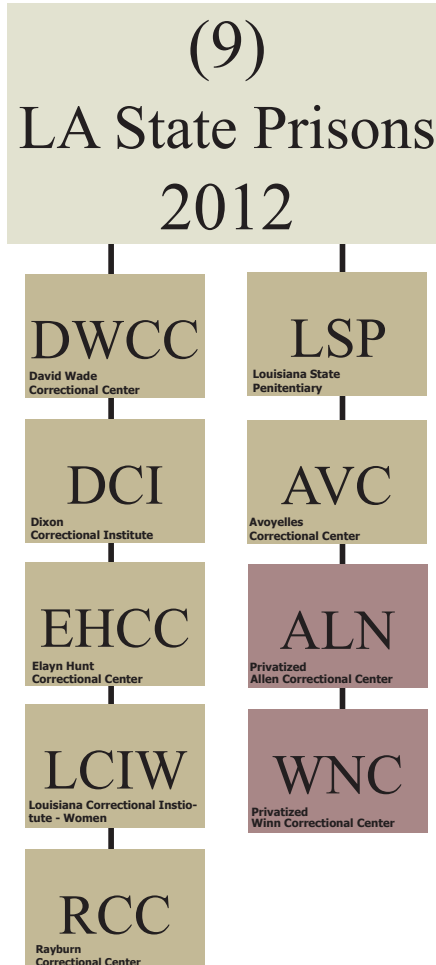
Only the aggregate numbers will be reported annually on the website. There will be no reporting by Institution, victim’s name or perpetrator’s name to ensure the integrity of the process, protect the security of the Institution, and to encourage the reporting of all PREA allegations in the future.

### ANALYSIS

During the calendar year of 2012 there were a total of 48 PREA allegations and during the calendar year of 2011 there was a total of 87 PREA allegations made. The total of substantiated cases were greater by two in the calendar year 2012 than the calendar year 2011. This change may be attributed to an increase in training and awareness of PREA during the calendar year 2012. It is significant to note that staff sexual misconduct declined in 2012.

### CORRECTIVE ACTION

The Department has implemented PREA and each Institution has adopted rules and regulations for the deterrence, protection, and reporting of prison rapes. These rules include but are not limited to the immediate separation of victim and perpetrator through the use of administrative segregation or suspension pending investigation for employees and if substantiated, the filing of criminal charges against the perpetrator whether staff or offender. The Department has also made anonymous third party reporting available through a toll-free number. Further specialized training has been made mandatory for the Prison Rape Elimination Act, PREA Investigators, and Medical/ Mental Health staff to serve as Victim Advocates.



# Staff - On - Offender Allegations January 1 - December 31, 2011

## PREA Incident Categories

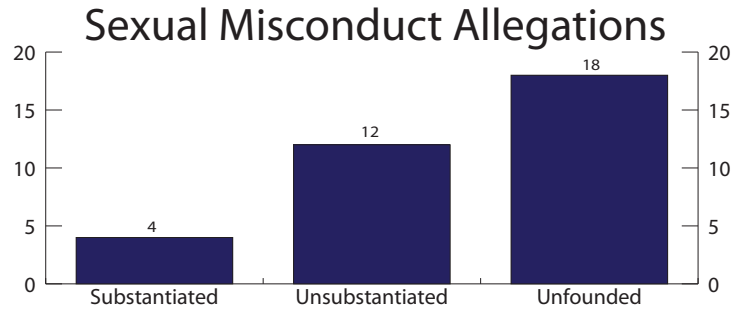
Total Staff/Offender Allegations Sex Abuse 57

Total Staff Sexual Misconduct Allegations 34

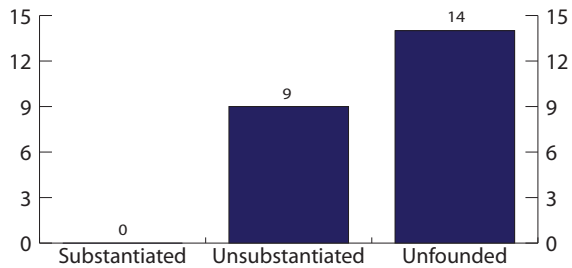
Substantiated	4
Unsubstantiated	12
Unfounded	18

Total Staff Sexual Harassment Allegations 23

Substantiated	0
Unsubstantiated	9
Unfounded	14



## Sexual Harassment Allegations



# Staff - On - Offender Allegations January 1 - December 31, 2012

## PREA Incident Categories

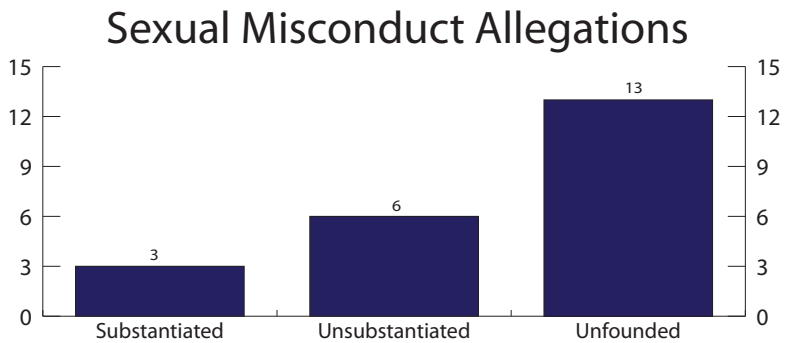
Total Staff/Offender Sex Abuse 28

Total Staff Sexual Misconduct Allegations 22

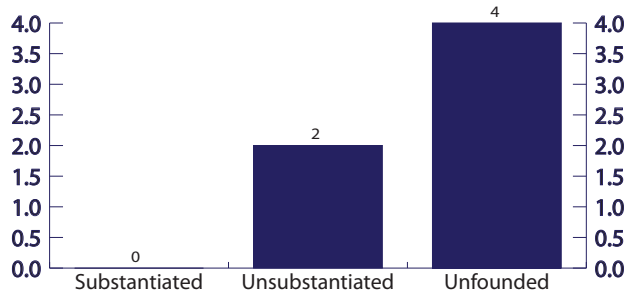
Substantiated	3
Unsubstantiated	6
Unfounded	13

Total Staff Sexual Harassment Allegations 6

Substantiated	0
Unsubstantiated	2
Unfounded	4



## Sexual Harassment Allegations



# Offender - On - Offender Allegations January 1 - December 31, 2011

## PREA Incident Categories

Total Offender/Offender Sex Abuse Allegations 30

Total Nonconsensual Sexual Acts Allegations 21

Substantiated 3

Unsubstantiated 13

Unfounded 5

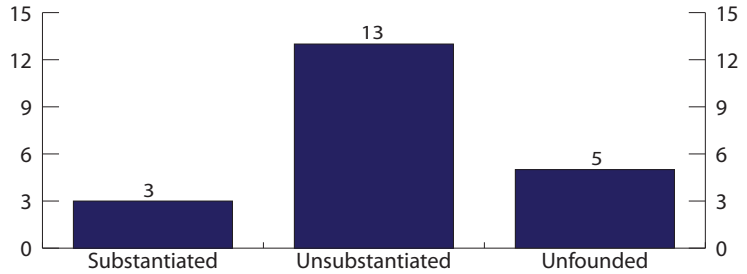
Total Abusive Sexual Contacts Allegations 9

Substantiated 1

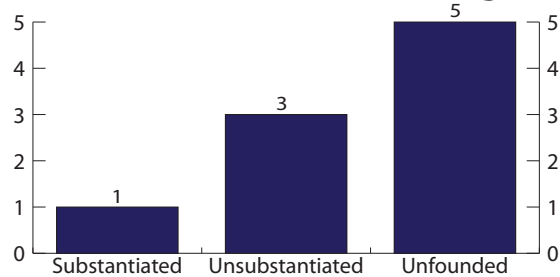
Unsubstantiated 3

Unfounded 5

## Nonconsensual Sexual Acts Allegations



## Abusive Sexual Contacts Allegations



# Offender - On - Offender Allegations January 1 - December 31, 2012

## PREA Incident Categories

Total Offender/Offender Sex Abuse Allegations 20

Total Nonconsensual Sexual Acts Allegations 17

Substantiated 7

Unsubstantiated 7

Unfounded 3

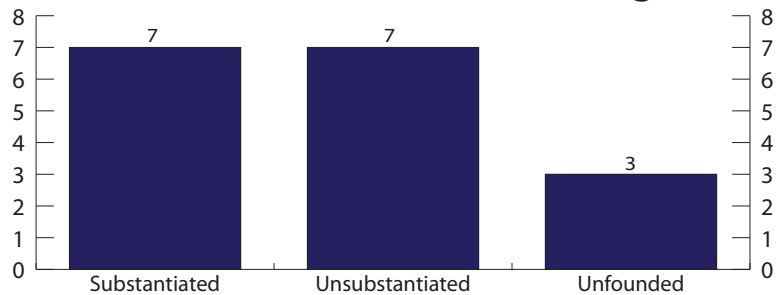
Total Abusive Sexual Contacts Allegations 3

Substantiated 0

Unsubstantiated 3

Unfounded 0

## Nonconsensual Sexual Acts Allegations



## Abusive Sexual Contacts Allegations

