

DEPARTMENT OF PUBLIC SAFETY AND CORRECTIONS

RECIDIVISM IN ADULT CORRECTIONS (PERCENT RETURN)

June 19, 2023

RECIDIVISM: RETURN TO CUSTODY FOLLOWING CONVICTION FOR A NEW FELONY OR TECHNICAL REVOCATION OF SUPERVISION AFTER HAVING BEEN RELEASED FROM INCARCERATION THROUGH COMPLETED SENTENCE, RELEASED ON PAROLE, CONDITIONAL RELEASE, OR SPLIT PROBATION SENTENCE. OFFENDERS RELEASED TO A DETAINER, RELEASED IN ERROR, DECEASED, OR TRANSFERRED TO ANOTHER JURISDICTION ARE NOT INCLUDED. AN OFFENDER MAY BE RELEASED MULTIPLE TIMES BUT IS ONLY COUNTED ONCE PER RELEASE YEAR.

OFFENDERS ARE TRACKED FOR A PERIOD OF TIME FROM DATE OF RELEASE BASED ON THE YEAR OF RETURN :

1st Year Returns: 12 months
2nd Year Returns: 24 months
3rd Year Returns: 36 months
4th Year Returns: 48 months
5th Year Returns: 60 months

RELEASE YR.:	1st Year (2021)	2nd Year (2020)	3rd Year (2019)	4th Year (2018)	5th Year (2017)
Total Population	13.8%	23.5%	30.3%	34.9%	40.3%
State Facilities	9.5%	17.6%	24.9%	28.9%	35.3%
Local Facilities	15.4%	25.4%	32.6%	37.7%	43.3%
Transitional Work Programs	10.2%	19.8%	27.7%	32.1%	36.4%
Blue Walters	12.0%	27.1%	32.1%	37.0%	44.3%
Parole Board Releases	5.2%	7.7%	12.5%	13.7%	22.2%
Sex Offenders	8.8%	14.9%	23.9%	24.6%	29.3%
Education	9.0%	13.7%	21.7%	21.5%	29.0%
Female	8.5%	14.9%	18.6%	22.9%	28.9%
P&P Completions	3.2%	6.2%	8.5%	11.6%	12.9%

DEPARTMENT OF PUBLIC SAFETY AND CORRECTIONS

RECIDIVISM IN ADULT CORRECTIONS (TOTAL POPULATION)

June 19, 2023

RECIDIVISM: RETURN TO CUSTODY FOLLOWING CONVICTION FOR A NEW FELONY OR TECHNICAL REVOCATION OF SUPERVISION AFTER HAVING BEEN RELEASED FROM INCARCERATION THROUGH COMPLETED SENTENCE, RELEASED ON PAROLE, CONDITIONAL RELEASE, OR SPLIT PROBATION SENTENCE. OFFENDERS RELEASED TO A DETAINER, RELEASED IN ERROR, DECEASED, OR TRANSFERRED TO ANOTHER JURISDICTION ARE NOT INCLUDED. AN OFFENDER MAY BE RELEASED MULTIPLE TIMES BUT IS ONLY COUNTED ONCE PER RELEASE YEAR.

OFFENDERS ARE TRACKED FOR A PERIOD OF TIME FROM DATE OF RELEASE BASED ON THE YEAR OF RETURN :

1st Year Returns: 12 months
2nd Year Returns: 24 months
3rd Year Returns: 36 months
4th Year Returns: 48 months
5th Year Returns: 60 months

	Total Releases	1st Year Returns	%	2nd Year Returns	%	3rd Year Returns	%	4th Year Returns	%	5th Year Returns	%
2008	12,846	2,141	16.7%	3,676	28.6%	4,733	36.8%	5,375	41.8%	5,831	45.4%
2009	12,938	2,087	16.1%	3,729	28.8%	4,625	35.7%	5,197	40.2%	5,623	43.5%
2010	14,760	2,265	15.3%	4,229	28.7%	5,231	35.4%	5,895	39.9%	6,354	43.0%
2011	14,218	2,249	15.8%	4,188	29.5%	5,174	36.4%	5,848	41.1%	6,300	44.3%
2012	14,487	2,343	16.2%	4,254	29.4%	5,249	36.2%	5,877	40.6%	6,323	43.6%
2013	15,246	2,453	16.1%	4,393	28.8%	5,346	35.1%	6,040	39.6%	6,512	42.7%
2014	15,030	2,317	15.4%	4,058	27.0%	5,126	34.1%	5,841	38.9%	6,278	41.8%
2015	14,824	2,194	14.8%	4,193	28.3%	5,360	36.2%	6064	40.9%	6,448	43.5%
2016	13,326	2,045	15.3%	3,738	28.1%	4,749	35.6%	5,225	39.2%	5,496	41.2%
2017	14,460	2,077	14.4%	3,943	27.3%	4,867	33.7%	5,371	37.1%	5,834	40.3%
2018	13,150	1,919	14.6%	3,339	25.4%	4,017	30.5%	4,594	34.9%		
2019	12,973	1,690	13.0%	2,952	22.8%	3,925	30.3%				
2020	10,693	1,211	11.3%	2,509	23.5%						
2021	9,360	1,288	13.8%								

STATE OFFENDERS RELEASED FROM ADULT FACILITIES, LOCAL JAIL FACILITIES, AND TRANSITIONAL WORK PROGRAMS.

DEPARTMENT OF PUBLIC SAFETY AND CORRECTIONS

RECIDIVISM IN ADULT CORRECTIONS (STATE FACILITIES)

June 19, 2023

RECIDIVISM: RETURN TO CUSTODY FOLLOWING CONVICTION FOR A NEW FELONY OR TECHNICAL REVOCATION OF SUPERVISION AFTER HAVING BEEN RELEASED FROM INCARCERATION THROUGH COMPLETED SENTENCE, RELEASED ON PAROLE, CONDITIONAL RELEASE, OR SPLIT PROBATION SENTENCE. OFFENDERS RELEASED TO A DETAINER, RELEASED IN ERROR, DECEASED, OR TRANSFERRED TO ANOTHER JURISDICTION ARE NOT INCLUDED. AN OFFENDER MAY BE RELEASED MULTIPLE TIMES BUT IS ONLY COUNTED ONCE PER RELEASE YEAR.

OFFENDERS ARE TRACKED FOR A PERIOD OF TIME FROM DATE OF RELEASE BASED ON THE YEAR OF RETURN :

1st Year Returns: 12 months
2nd Year Returns: 24 months
3rd Year Returns: 36 months
4th Year Returns: 48 months
5th Year Returns: 60 months

	Total Releases	1st Year Returns	%	2nd Year Returns	%	3rd Year Returns	%	4th Year Returns	%	5th Year Returns	%
2008	3,165	553	17.5%	944	29.8%	1,227	38.8%	1,387	43.8%	1,486	47.0%
2009	3,140	494	15.7%	885	28.2%	1,100	35.0%	1,208	38.5%	1,317	41.9%
2010	3,615	538	14.9%	1,025	28.4%	1,334	36.9%	1,483	41.0%	1,604	44.4%
2011	3,284	468	14.3%	940	28.6%	1,188	36.2%	1,351	41.1%	1,446	44.0%
2012	3,080	441	14.3%	873	28.3%	1,105	35.9%	1,240	40.3%	1,337	43.4%
2013	3,271	444	13.6%	849	26.0%	1,108	33.9%	1,246	38.1%	1,353	41.4%
2014	3,096	407	13.1%	776	25.1%	992	32.0%	1,120	36.2%	1,215	39.2%
2015	3,029	363	12.0%	765	25.3%	1,009	33.3%	1,160	38.3%	1,241	41.0%
2016	2,410	301	12.5%	598	24.8%	790	32.8%	873	36.2%	908	37.7%
2017	2,197	243	11.1%	516	23.5%	650	29.6%	712	32.4%	775	35.3%
2018	2,028	238	11.7%	420	20.7%	509	25.1%	587	28.9%		
2019	2,024	193	9.5%	363	17.9%	504	24.9%				
2020	1,625	124	7.6%	286	17.6%						
2021	1,352	128	9.5%								

STATE OFFENDERS RELEASED FROM ADULT INSTITUTIONS.

DEPARTMENT OF PUBLIC SAFETY AND CORRECTIONS

RECIDIVISM IN ADULT CORRECTIONS (LOCAL FACILITIES)

June 19, 2023

RECIDIVISM: RETURN TO CUSTODY FOLLOWING CONVICTION FOR A NEW FELONY OR TECHNICAL REVOCATION OF SUPERVISION AFTER HAVING BEEN RELEASED FROM INCARCERATION THROUGH COMPLETED SENTENCE, RELEASED ON PAROLE, CONDITIONAL RELEASE, OR SPLIT PROBATION SENTENCE. OFFENDERS RELEASED TO A DETAINER, RELEASED IN ERROR, DECEASED, OR TRANSFERRED TO ANOTHER JURISDICTION ARE NOT INCLUDED. AN OFFENDER MAY BE RELEASED MULTIPLE TIMES BUT IS ONLY COUNTED ONCE PER RELEASE YEAR.

OFFENDERS ARE TRACKED FOR A PERIOD OF TIME FROM DATE OF RELEASE BASED ON THE YEAR OF RETURN :

- 1st Year Returns:** 12 months
- 2nd Year Returns:** 24 months
- 3rd Year Returns:** 36 months
- 4th Year Returns:** 48 months
- 5th Year Returns:** 60 months

	Total Releases	1st Year Returns	%	2nd Year Returns	%	3rd Year Returns	%	4th Year Returns	%	5th Year Returns	%
2008	6,189	1,192	19.3%	1,953	31.6%	2,402	38.8%	2,702	43.7%	2,934	47.4%
2009	6,676	1,190	17.8%	2,015	30.2%	2,533	37.9%	2,858	42.8%	3,067	45.9%
2010	7,764	1,352	17.4%	2,359	30.4%	2,908	37.5%	3,278	42.2%	3,521	45.4%
2011	7,832	1,403	17.9%	2,417	30.9%	3,000	38.3%	3,378	43.1%	3,641	46.5%
2012	8,441	1,546	18.3%	2,618	31.0%	3,246	38.5%	3,629	43.0%	3,903	46.2%
2013	9,052	1,634	18.1%	2,795	30.9%	3,425	37.8%	3,866	42.7%	4,144	45.8%
2014	9,193	1,605	17.5%	2,697	29.3%	3356	36.5%	3,806	41.4%	4,082	44.4%
2015	9,166	1,595	17.4%	2,869	31.3%	3572	39.0%	4,004	43.7%	4,239	46.2%
2016	8,804	1,534	17.4%	2,690	30.6%	3,341	37.9%	3,645	41.4%	3,841	43.6%
2017	9,566	1,566	16.4%	2,851	29.8%	3,469	36.3%	3,822	40.0%	4,145	43.3%
2018	9,051	1,469	16.2%	2,493	27.5%	2,983	33.0%	3,412	37.7%		
2019	9,025	1,337	14.8%	2,260	25.0%	2,945	32.6%				
2020	7,945	1,003	12.6%	2,016	25.4%						
2021	6,950	1,068	15.4%								

STATE OFFENDERS RELEASED FROM LOCAL FACILITIES .

DEPARTMENT OF PUBLIC SAFETY AND CORRECTIONS

RECIDIVISM IN ADULT CORRECTIONS (TRANSITIONAL WORK PROGRAMS)

June 19, 2023

RECIDIVISM: RETURN TO CUSTODY FOLLOWING CONVICTION FOR A NEW FELONY OR TECHNICAL REVOCATION OF SUPERVISION AFTER HAVING BEEN RELEASED FROM INCARCERATION THROUGH COMPLETED SENTENCE, RELEASED ON PAROLE, CONDITIONAL RELEASE, OR SPLIT PROBATION SENTENCE. OFFENDERS RELEASED TO A DETAINER, RELEASED IN ERROR, DECEASED, OR TRANSFERRED TO ANOTHER JURISDICTION ARE NOT INCLUDED. AN OFFENDER MAY BE RELEASED MULTIPLE TIMES BUT IS ONLY COUNTED ONCE PER RELEASE YEAR.

OFFENDERS ARE TRACKED FOR A PERIOD OF TIME FROM DATE OF RELEASE BASED ON THE YEAR OF RETURN :

- 1st Year Returns:** 12 months
- 2nd Year Returns:** 24 months
- 3rd Year Returns:** 36 months
- 4th Year Returns:** 48 months
- 5th Year Returns:** 60 months

	Total Releases	1st Year Returns	%	2nd Year Returns	%	3rd Year Returns	%	4th Year Returns	%	5th Year Returns	%
2008	3,036	399	13.1%	764	25.2%	974	32.1%	1,147	37.8%	1,253	41.3%
2009	2,736	328	12.0%	662	24.2%	877	32.1%	990	36.2%	1,096	40.1%
2010	2,957	315	10.7%	679	23.0%	887	30.0%	1,021	34.5%	1,112	37.6%
2011	2,802	306	10.9%	683	24.4%	927	33.1%	1,052	37.5%	1,146	40.9%
2012	2,742	304	11.1%	635	23.2%	862	31.4%	965	35.2%	1,034	37.7%
2013	2,861	325	11.4%	641	22.4%	826	28.9%	947	33.1%	1,034	36.1%
2014	2,847	332	11.7%	654	23.0%	870	30.6%	1,020	35.8%	1,092	38.4%
2015	2,742	273	10.0%	632	23.0%	862	31.4%	996	36.3%	1,067	38.9%
2016	2,274	254	11.2%	535	23.5%	722	31.8%	824	36.2%	873	38.4%
2017	2,849	314	11.0%	664	23.3%	849	29.8%	949	33.3%	1,037	36.4%
2018	2,228	257	11.5%	514	23.1%	630	28.3%	716	32.1%		
2019	2,075	208	10.0%	410	19.8%	575	27.7%				
2020	1,386	118	8.5%	275	19.8%						
2021	1,107	113	10.2%								

STATE OFFENDERS RELEASED FROM TRANSITIONAL WORK PROGRAMS.

DEPARTMENT OF PUBLIC SAFETY AND CORRECTIONS

RECIDIVISM IN ADULT CORRECTIONS (BLUE WALTERS)

June 19, 2023

RECIDIVISM: RETURN TO CUSTODY FOLLOWING CONVICTION FOR A NEW FELONY OR TECHNICAL REVOCATION OF SUPERVISION AFTER HAVING BEEN RELEASED FROM INCARCERATION THROUGH COMPLETED SENTENCE, RELEASED ON PAROLE, CONDITIONAL RELEASE, OR SPLIT PROBATION SENTENCE. OFFENDERS RELEASED TO A DETAINER, RELEASED IN ERROR, DECEASED, OR TRANSFERRED TO ANOTHER JURISDICTION ARE NOT INCLUDED. AN OFFENDER MAY BE RELEASED MULTIPLE TIMES BUT IS ONLY COUNTED ONCE PER RELEASE YEAR.

OFFENDERS ARE TRACKED FOR A PERIOD OF TIME FROM DATE OF RELEASE BASED ON THE YEAR OF RETURN :

- 1st Year Returns:** 12 months
- 2nd Year Returns:** 24 months
- 3rd Year Returns:** 36 months
- 4th Year Returns:** 48 months
- 5th Year Returns:** 60 months

	Total Releases	1st Year Returns	%	2nd Year Returns	%	3rd Year Returns	%	4th Year Returns	%	5th Year Returns	%
2008	105	18	17.1%	34	32.4%	41	39.0%	52	49.5%	55	52.4%
2009	106	13	12.3%	29	27.4%	48	45.3%	49	46.2%	57	53.8%
2010	322	44	13.7%	90	28.0%	121	37.6%	134	41.6%	143	44.4%
2011	360	56	15.6%	110	30.6%	146	40.6%	163	45.3%	176	48.9%
2012	431	65	15.1%	123	28.5%	168	39.0%	193	44.8%	207	48.0%
2013	551	92	16.7%	178	32.3%	215	39.0%	242	43.9%	262	47.5%
2014	446	68	15.2%	137	30.7%	175	39.2%	199	44.6%	211	47.3%
2015	539	73	13.5%	167	31.0%	227	42.1%	259	48.1%	270	50.1%
2016	536	66	12.3%	149	27.8%	194	36.2%	218	40.7%	232	43.3%
2017	585	82	14.0%	178	30.4%	222	37.9%	242	41.4%	259	44.3%
2018	511	67	13.1%	126	24.7%	172	33.7%	189	37.0%		
2019	464	43	9.3%	103	22.2%	149	32.1%				
2020	292	32	11.0%	79	27.1%						
2021	133	16	12.0%								

INCLUDES OFFENDERS THAT PARTICIPATED IN BLUE WALTERS PRIOR TO RELEASE.

*BLUE WALTERS IS A SUBSTANCE ABUSE TREATMENT CENTER

**AUGUST 2005 ORLEANS/BLUE WALTERS PROGRAM IN NEW ORLEANS CLOSED

***TENSAS/BLUE WALTERS PROGRAM OPEN MAY 2004 TO JULY 2006.

****JULY 2006-JULY 2007 BLUE WALTERS PROGRAM TRANSFERRED TO SOUTH LOUISIANA CORRECTIONAL CENTER

DEPARTMENT OF PUBLIC SAFETY AND CORRECTIONS

RECIDIVISM IN ADULT CORRECTIONS (PAROLE BOARD RELEASES)

June 19, 2023

RECIDIVISM: RETURN TO CUSTODY FOLLOWING CONVICTION FOR A NEW FELONY OR TECHNICAL REVOCATION OF SUPERVISION AFTER HAVING BEEN RELEASED FROM INCARCERATION THROUGH COMPLETED SENTENCE, RELEASED ON PAROLE, CONDITIONAL RELEASE, OR SPLIT PROBATION SENTENCE. OFFENDERS RELEASED TO A DETAINER, RELEASED IN ERROR, DECEASED, OR TRANSFERRED TO ANOTHER JURISDICTION ARE NOT INCLUDED. AN OFFENDER MAY BE RELEASED MULTIPLE TIMES BUT IS ONLY COUNTED ONCE PER RELEASE YEAR.

OFFENDERS ARE TRACKED FOR A PERIOD OF TIME FROM DATE OF RELEASE BASED ON THE YEAR OF RETURN :

- 1st Year Returns:** 12 months
- 2nd Year Returns:** 24 months
- 3rd Year Returns:** 36 months
- 4th Year Returns:** 48 months
- 5th Year Returns:** 60 months

	Total Releases	1st Year Returns	%	2nd Year Returns	%	3rd Year Returns	%	4th Year Returns	%	5th Year Returns	%
2008	825	65	7.9%	187	22.7%	256	31.0%	304	36.8%	344	41.7%
2009	601	63	10.5%	135	22.5%	193	32.1%	234	38.9%	257	42.8%
2010	602	41	6.8%	122	20.3%	179	29.7%	209	34.7%	217	36.0%
2011	555	45	8.1%	122	22.0%	168	30.3%	188	33.9%	199	35.9%
2012	825	73	8.8%	176	21.3%	260	31.5%	291	35.3%	318	38.5%
2013	601	50	8.3%	115	19.1%	147	24.5%	181	30.1%	197	32.8%
2014	512	44	8.6%	86	16.8%	125	24.4%	141	27.5%	157	30.7%
2015	425	28	6.6%	66	15.5%	96	22.6%	118	27.8%	125	29.4%
2016	307	13	4.2%	39	12.7%	62	20.2%	75	24.4%	85	6.0%
2017	288	12	4.2%	29	10.1%	43	14.9%	52	18.1%	64	22.2%
2018	475	19	4.0%	43	9.1%	52	10.9%	65	13.7%		
2019	601	19	3.2%	50	8.3%	75	12.5%				
2020	467	7	1.5%	36	7.7%						
2021	306	16	5.2%								

EXCLUDES: IMPACT GRADUATES

DEPARTMENT OF PUBLIC SAFETY AND CORRECTIONS

RECIDIVISM IN ADULT CORRECTIONS (SEX OFFENDERS)

June 19,2023

RECIDIVISM: RETURN TO CUSTODY FOLLOWING CONVICTION FOR A NEW FELONY OR TECHNICAL REVOCATION OF SUPERVISION AFTER HAVING BEEN RELEASED FROM INCARCERATION THROUGH COMPLETED SENTENCE, RELEASED ON PAROLE, CONDITIONAL RELEASE, OR SPLIT PROBATION SENTENCE. OFFENDERS RELEASED TO A DETAINER, RELEASED IN ERROR, DECEASED, OR TRANSFERRED TO ANOTHER JURISDICTION ARE NOT INCLUDED. AN OFFENDER MAY BE RELEASED MULTIPLE TIMES BUT IS ONLY COUNTED ONCE PER RELEASE YEAR.

OFFENDERS ARE TRACKED FOR A PERIOD OF TIME FROM DATE OF RELEASE BASED ON THE YEAR OF RETURN :

- 1st Year Returns:** 12 months
- 2nd Year Returns:** 24 months
- 3rd Year Returns:** 36 months
- 4th Year Returns:** 48 months
- 5th Year Returns:** 60 months

	Total Releases	1st Year Returns	%	2nd Year Returns	%	3rd Year Returns	%	4th Year Returns	%	5th Year Returns	%
2008	620	100	16.1%	155	25.0%	195	31.5%	231	37.3%	258	41.6%
2009	620	93	15.0%	153	24.7%	190	30.6%	205	33.1%	229	36.9%
2010	619	92	14.9%	159	25.7%	206	33.3%	234	37.8%	250	40.4%
2011	652	61	9.4%	133	20.4%	181	27.8%	217	33.3%	235	36.0%
2012	603	56	9.3%	121	20.1%	164	27.2%	183	30.3%	201	33.3%
2013	685	74	10.8%	139	20.3%	181	26.4%	201	29.3%	224	32.7%
2014	625	56	9.0%	101	16.2%	131	21.0%	162	25.9%	181	29.0%
2015	629	61	9.7%	108	17.2%	154	24.5%	173	27.5%	194	30.8%
2016	577	49	8.5%	105	18.2%	132	22.9%	150	26.0%	159	27.6%
2017	569	43	7.6%	93	16.3%	137	24.1%	153	26.9%	167	29.3%
2018	517	46	8.9%	77	14.9%	101	19.5%	127	24.6%		
2019	498	46	9.2%	76	15.3%	119	23.9%				
2020	509	34	6.7%	76	14.9%						
2021	490	43	8.8%								

STATE OFFENDERS RELEASED FROM ADULT INSTITUTIONS, LOCAL FACILITIES, AND TRANSITIONAL WORK PROGRAMS.

SEX OFFENSES A VIOLATION OF ANY PROVISION OF SUBPART C OF PART II, SUBPART B OF PART IV, OR SUBPART A(1) OR A(4) OF SUBPART V OF CHAPTER 1 OF TITLE 14 OF THE LOUISIANA REVISED STATUTES OF 1950.

DEPARTMENT OF PUBLIC SAFETY AND CORRECTIONS

RECIDIVISM IN ADULT CORRECTIONS (EDUCATION)

June 19, 2023

RECIDIVISM: RETURN TO CUSTODY FOLLOWING CONVICTION FOR A NEW FELONY OR TECHNICAL REVOCATION OF SUPERVISION AFTER HAVING BEEN RELEASED FROM INCARCERATION THROUGH COMPLETED SENTENCE, RELEASED ON PAROLE, CONDITIONAL RELEASE, OR SPLIT PROBATION SENTENCE. OFFENDERS RELEASED TO A DETAINER, RELEASED IN ERROR, DECEASED, OR TRANSFERRED TO ANOTHER JURISDICTION ARE NOT INCLUDED. AN OFFENDER MAY BE RELEASED MULTIPLE TIMES BUT IS ONLY COUNTED ONCE PER RELEASE YEAR.

OFFENDERS ARE TRACKED FOR A PERIOD OF TIME FROM DATE OF RELEASE BASED ON THE YEAR OF RETURN :

1st Year Returns: 12 months
2nd Year Returns: 24 months
3rd Year Returns: 36 months
4th Year Returns: 48 months
5th Year Returns: 60 months

	Total Releases	1st Year Returns	%	2nd Year Returns	%	3rd Year Returns	%	4th Year Returns	%	5th Year Returns	%
2008	1,450	159	11.0%	333	23.0%	454	31.3%	540	37.2%	593	40.9%
2009	1,477	177	12.0%	351	23.8%	483	32.7%	544	36.8%	598	40.5%
2010	1,798	170	9.5%	383	21.3%	548	30.5%	634	35.3%	705	39.2%
2011	1,457	137	9.4%	366	25.1%	490	33.6%	570	39.1%	624	42.8%
2012	1,345	159	11.8%	340	25.3%	483	35.9%	562	41.8%	601	44.7%
2013	1,322	107	8.1%	254	19.2%	348	26.3%	415	31.4%	460	34.8%
2014	1,157	109	9.4%	228	19.7%	313	27.1%	369	31.9%	406	35.1%
2015	1,071	75	7.0%	181	16.9%	263	24.6%	325	30.3%	348	32.5%
2016	878	69	7.9%	165	18.8%	235	26.8%	279	31.8%	300	34.2%
2017	974	65	6.7%	157	16.1%	209	21.5%	239	24.5%	282	29.0%
2018	850	57	6.7%	109	12.8%	144	16.9%	183	21.5%		
2019	792	43	5.4%	104	13.1%	172	21.7%				
2020	729	33	4.5%	100	13.7%						
2021	1353	128	9.0%								

STATE OFFENDERS RELEASED FROM ADULT INSTITUTIONS, LOCAL FACILITIES, AND TRANSITIONAL WORK PROGRAMS THAT HAVE COMPLETED

DEPARTMENT OF PUBLIC SAFETY AND CORRECTIONS

RECIDIVISM IN ADULT CORRECTIONS (FEMALE RECIDIVISM)

June 19, 2023

RECIDIVISM: RETURN TO CUSTODY FOLLOWING CONVICTION FOR A NEW FELONY OR TECHNICAL REVOCATION OF SUPERVISION AFTER HAVING BEEN RELEASED FROM INCARCERATION THROUGH COMPLETED SENTENCE, RELEASED ON PAROLE, CONDITIONAL RELEASE, OR SPLIT PROBATION SENTENCE. OFFENDERS RELEASED TO A DETAINER, RELEASED IN ERROR, DECEASED, OR TRANSFERRED TO ANOTHER JURISDICTION ARE NOT INCLUDED. AN OFFENDER MAY BE RELEASED MULTIPLE TIMES BUT IS ONLY COUNTED ONCE PER RELEASE YEAR.

OFFENDERS ARE TRACKED FOR A PERIOD OF TIME FROM DATE OF RELEASE BASED ON THE YEAR OF RETURN :

- 1st Year Returns:** 12 months
- 2nd Year Returns:** 24 months
- 3rd Year Returns:** 36 months
- 4th Year Returns:** 48 months
- 5th Year Returns:** 60 months

	Total Releases	1st Year Returns	%	2nd Year Returns	%	3rd Year Returns	%	4th Year Returns	%	5th Year Returns	%
2008	1,437	169	11.8%	292	20.3%	390	27.1%	455	31.7%	501	34.9%
2009	1,435	138	9.6%	248	17.3%	317	22.1%	363	25.3%	402	28.0%
2010	1,739	163	9.4%	315	18.1%	394	22.7%	453	26.0%	499	28.7%
2011	1,627	169	10.4%	299	18.4%	374	23.0%	432	26.6%	469	28.8%
2012	1,551	181	11.7%	308	19.9%	390	25.1%	445	28.7%	485	31.3%
2013	1,666	174	10.4%	301	18.1%	379	22.7%	441	26.5%	480	28.8%
2014	1,666	161	9.7%	291	17.5%	379	22.7%	441	26.5%	481	28.9%
2015	1,619	165	10.2%	330	20.4%	425	26.3%	475	29.3%	512	31.6%
2016	1,533	166	10.8%	304	19.8%	376	24.5%	413	26.9%	436	28.4%
2017	1,530	159	10.4%	290	19.0%	351	22.9%	398	26.0%	442	28.9%
2018	1,563	164	10.5%	281	18.0%	320	20.5%	358	22.9%		
2019	1,480	128	8.6%	205	13.9%	275	18.6%				
2020	1,103	78	7.1%	164	14.9%						
2021	927	79	8.5%								

FEMALE STATE OFFENDERS RELEASED FROM ADULT INSTITUTIONS, LOCAL FACILITIES, AND TRANSITIONAL WORK PROGRAMS.

DEPARTMENT OF PUBLIC SAFETY AND CORRECTIONS

RECIDIVISM IN ADULT CORRECTIONS (ALL P&P COMPLETIONS)

June 19, 2023

RECIDIVISM: RETURN TO CUSTODY FOLLOWING CONVICTION FOR A NEW FELONY OR TECHNICAL REVOCATION OF SUPERVISION AFTER HAVING BEEN RELEASED FROM INCARCERATION THROUGH COMPLETED SENTENCE, RELEASED ON PAROLE, CONDITIONAL RELEASE, OR SPLIT PROBATION SENTENCE. OFFENDERS RELEASED TO A DETAINER, RELEASED IN ERROR, DECEASED, OR TRANSFERRED TO ANOTHER JURISDICTION ARE NOT INCLUDED. AN OFFENDER MAY BE RELEASED MULTIPLE TIMES BUT IS ONLY COUNTED ONCE PER RELEASE YEAR.

OFFENDERS ARE TRACKED FOR A PERIOD OF TIME FROM DATE OF RELEASE BASED ON THE YEAR OF RETURN :

- 1st Year Returns:** 12 months
- 2nd Year Returns:** 24 months
- 3rd Year Returns:** 36 months
- 4th Year Returns:** 48 months
- 5th Year Returns:** 60 months

	Total Releases	1st Year Returns	%	2nd Year Returns	%	3rd Year Returns	%	4th Year Returns	%	5th Year Returns	%
2008	17,321	723	4.2%	1,728	10.0%	2,528	14.6%	3,205	18.5%	3,721	21.5%
2009	18,265	791	4.3%	1,777	9.7%	2,689	14.7%	3,347	18.3%	3,841	21.0%
2010	18,764	755	4.0%	1,774	9.5%	2,672	14.2%	3,363	17.9%	3,918	20.9%
2011	19,271	598	3.1%	1,925	10.0%	2,796	14.5%	3,470	18.0%	3,001	15.6%
2012	19,017	866	4.6%	1,880	9.9%	2,688	14.1%	2,454	12.9%	2,849	15.0%
2013	19,562	858	4.4%	1,837	9.4%	2,738	14.0%	2,423	12.4%	2,844	14.5%
2014	18,420	897	4.9%	1,293	7.0%	1,913	10.4%	2,428	13.2%	2,822	15.3%
2015	18,025	548	3.0%	1,212	6.7%	1,799	10.0%	2,284	12.7%	2,601	14.4%
2016	18,387	619	3.4%	1,308	7.1%	1,929	10.5%	2,325	12.6%	2,589	14.1%
2017	20,188	631	3.1%	1,394	6.9%	1,911	9.5%	2,232	11.1%	2,610	12.9%
2018	27,251	947	3.5%	1,843	6.8%	2,470	9.1%	3156	11.6%		
2019	22,527	636	2.8%	1,202	5.3%	1907	8.5%				
2020	21,461	524	2.4%	1341	6.2%						
2021	19,287	613	3.2%								

DEPARTMENT OF PUBLIC SAFETY AND CORRECTIONS

RECIDIVISM IN ADULT CORRECTIONS (TOTAL POPULATION - CRIME TYPE)

June 22, 2023

RECIDIVISM: RETURN TO CUSTODY FOLLOWING CONVICTION FOR A NEW FELONY OR TECHNICAL REVOCATION OF SUPERVISION AFTER HAVING BEEN RELEASED FROM INCARCERATION THROUGH COMPLETED SENTENCE, RELEASED ON PAROLE, CONDITIONAL RELEASE, OR SPLIT PROBATION SENTENCE. OFFENDERS RELEASED TO A DETAINER, RELEASED IN ERROR, DECEASED, OR TRANSFERRED TO ANOTHER JURISDICTION ARE NOT INCLUDED. AN OFFENDER MAY BE RELEASED MULTIPLE TIMES BUT IS ONLY COUNTED ONCE PER RELEASE YEAR.

OFFENDERS ARE TRACKED FOR A PERIOD OF TIME FROM DATE OF RELEASE BASED ON THE YEAR OF RETURN :

1st Year Returns: 12 months
2nd Year Returns: 24 months
3rd Year Returns: 36 months
4th Year Returns: 48 months
5th Year Returns: 60 months

	Total Releases	1st Year Returns	%	2nd Year Returns	%	3rd Year Returns	%	4th Year Returns	%	5th Year Returns	%
2008	12,846	2,141	16.7%	3,676	28.6%	4,733	36.8%	5,375	41.8%	5,831	45.4%
2009	12,938	2,087	16.1%	3,729	28.8%	4,625	35.7%	5,197	40.2%	5,623	43.5%
2010	14,760	2,265	15.3%	4,229	28.7%	5,231	35.4%	5,895	39.9%	6,354	43.0%
2011	14,218	2,249	15.8%	4,188	29.5%	5,174	36.4%	5,848	41.1%	6,300	44.3%
2012	14,487	2,343	16.2%	4,254	29.4%	5,249	36.2%	5,877	40.6%	6,323	43.6%
2013	15,246	2,453	16.1%	4,393	28.8%	5,346	35.1%	6,040	39.6%	6,512	42.7%
2014	15,030	2,317	15.4%	4,058	27.0%	5,126	34.1%	5,841	38.9%	6,278	41.8%
2015	14,824	2,194	14.8%	4,193	28.3%	5,360	36.2%	6064	40.9%	6,448	43.5%
2016	13,326	2,045	15.3%	3,738	28.1%	4,749	35.6%	5,225	39.2%	5,495	41.2%
2017	14,460	2,077	14.4%	3,943	27.3%	4,867	33.7%	5,371	37.1%	5,834	40.3%
2018	13,150	1,919	14.6%	3,339	25.4%	4,015	30.5%	4,594	34.9%		
2019	12,974	1,690	13.0%	2,951	22.7%	3,925	30.3%				
2020	10,692	1,207	11.3%	2,509	23.5%						
2021	9,360	1,288	13.8%								

	1st Year (2020)	2nd Year (2019)	3rd Year (2018)	4th Year (2017)	5th Year (2016)
PERCENT RETURNED WITHIN EACH RELEASE CRIME TYPE (Based on Last Full Year's Returns)					
VIOLENT CRIMES:	1.0%	2.2%	3.0%	3.7%	4.2%
DRUG CRIMES:	3.7%	7.9%	10.6%	12.4%	14.2%
PROPERTY CRIMES:	4.0%	7.5%	10.5%	12.9%	14.7%
ALL OTHER CRIMES:	2.5%	5.2%	6.5%	8.1%	8.1%

STATE OFFENDERS RELEASED FROM ADULT INSTITUTIONS, LOCAL FACILITIES, AND WORK RELEASE CENTERS.
 CRIME TYPE IS THE CRIME THE OFFENDER SERVED TIME FOR AND THEN WAS RELEASED FROM INCARCERATION.

DEPARTMENT OF PUBLIC SAFETY AND CORRECTIONS

RECIDIVISM IN ADULT CORRECTIONS (TOTAL POPULATION - OFFENDER CLASS)

March 22, 2023

RECIDIVISM: RETURN TO CUSTODY FOLLOWING CONVICTION FOR A NEW FELONY OR TECHNICAL REVOCATION OF SUPERVISION AFTER HAVING BEEN RELEASED FROM INCARCERATION THROUGH COMPLETED SENTENCE, RELEASED ON PAROLE, CONDITIONAL RELEASE, OR SPLIT PROBATION SENTENCE. OFFENDERS RELEASED TO A DETAINER, RELEASED IN ERROR, DECEASED, OR TRANSFERRED TO ANOTHER JURISDICTION ARE NOT INCLUDED. AN OFFENDER MAY BE RELEASED MULTIPLE TIMES BUT IS ONLY COUNTED ONCE PER RELEASE YEAR.

OFFENDERS ARE TRACKED FOR A PERIOD OF TIME FROM DATE OF RELEASE BASED ON THE YEAR OF RETURN :

1st Year Returns: 12 months
2nd Year Returns: 24 months
3rd Year Returns: 36 months
4th Year Returns: 48 months
5th Year Returns: 60 months

	Total Releases	1st Year Returns	%	2nd Year Returns	%	3rd Year Returns	%	4th Year Returns	%	5th Year Returns	%
2008	12,846	2,141	16.7%	3,676	28.6%	4,733	36.8%	5,375	41.8%	5,831	45.4%
2009	12,938	2,087	16.1%	3,729	28.8%	4,625	35.7%	5,197	40.2%	5,623	43.5%
2010	14,760	2,265	15.3%	4,229	28.7%	5,231	35.4%	5,895	39.9%	6,354	43.0%
2011	14,218	2,249	15.8%	4,188	29.5%	5,174	36.4%	5,848	41.1%	6,300	44.3%
2012	14,487	2,343	16.2%	4,254	29.4%	5,249	36.2%	5,877	40.6%	6,323	43.6%
2013	15,246	2,453	16.1%	4,393	28.8%	5,346	35.1%	6,040	39.6%	6,512	42.7%
2014	15,030	2,317	15.4%	4,058	27.0%	5,126	34.1%	5,841	38.9%	6,278	41.8%
2015	14,824	2,194	14.8%	4,193	28.3%	5,360	36.2%	6064	40.9%	6,448	43.5%
2016	13,326	2,045	15.3%	3,738	28.1%	4,749	35.6%	5,225	39.2%	5,496	41.2%
2017	14,460	2,077	14.4%	3,943	27.3%	4,867	33.7%	5,371	37.1%	5,834	40.3%
2018	13,150	1,919	14.6%	3,339	25.4%	4,017	30.5%	4,594	34.9%		
2019	12,973	1,690	13.0%	2,952	22.8%	3,925	30.3%				
2020	10,693	1,211	11.3%	2,509	23.5%						
2021	9,360	1,288	13.8%								

	1st Year (2021)	2nd Year (2020)	3rd Year (2019)	4th Year (2018)	5th Year (2017)
PERCENT RETURNED BY CURRENT OFFENDER CLASS (Based on Last Full Year's Returns)					
1ST OFFENDER:	7.7%	6.4%	5.7%	4.5%	4.7%
2ND OFFENDER:	16.4%	17.3%	15.0%	17.4%	16.1%
3RD OFFENDER:	22.7%	24.4%	21.5%	23.9%	24.0%
4TH OFFENDER+:	53.2%	51.8%	57.7%	54.3%	55.2%
UNKNOWN:	0.0%	0.0%	0.0%	0.0%	0.0%

STATE OFFENDERS RELEASED FROM ADULT INSTITUTIONS, LOCAL FACILITIES, AND WORK RELEASE CENTERS.

DEPARTMENT OF PUBLIC SAFETY AND CORRECTIONS

RECIDIVISM IN ADULT CORRECTIONS (TOTAL POPULATION - AGE)

June 22, 2023

RECIDIVISM: RETURN TO CUSTODY FOLLOWING CONVICTION FOR A NEW FELONY OR TECHNICAL REVOCATION OF SUPERVISION AFTER HAVING BEEN RELEASED FROM INCARCERATION THROUGH COMPLETED SENTENCE, RELEASED ON PAROLE, CONDITIONAL RELEASE, OR SPLIT PROBATION SENTENCE. OFFENDERS RELEASED TO A DETAINER, RELEASED IN ERROR, DECEASED, OR TRANSFERRED TO ANOTHER JURISDICTION ARE NOT INCLUDED. AN OFFENDER MAY BE RELEASED MULTIPLE TIMES BUT IS ONLY COUNTED ONCE PER RELEASE YEAR.

OFFENDERS ARE TRACKED FOR A PERIOD OF TIME FROM DATE OF RELEASE BASED ON THE YEAR OF RETURN :

1st Year Returns: 12 months
 2nd Year Returns: 24 months
 3rd Year Returns: 36 months
 4th Year Returns: 48 months
 5th Year Returns: 60 months

	Total Releases	1st Year Returns	%	2nd Year Returns	%	3rd Year Returns	%	4th Year Returns	%	5th Year Returns	%
2008	12,846	2,141	16.7%	3,676	28.6%	4,733	36.8%	5,375	41.8%	5,831	45.4%
2009	12,938	2,087	16.1%	3,729	28.8%	4,625	35.7%	5,197	40.2%	5,623	43.5%
2010	14,760	2,265	15.3%	4,229	28.7%	5,231	35.4%	5,895	39.9%	6,354	43.0%
2011	14,218	2,249	15.8%	4,188	29.5%	5,174	36.4%	5,848	41.1%	6,300	44.3%
2012	14,487	2,343	16.2%	4,254	29.4%	5,249	36.2%	5,877	40.6%	6,323	43.6%
2013	15,246	2,453	16.1%	4,393	28.8%	5,346	35.1%	6,040	39.6%	6,512	42.7%
2014	15,030	2,317	15.4%	4,058	27.0%	5,126	34.1%	5,841	38.9%	6,278	41.8%
2015	14,824	2,194	14.8%	4,193	28.3%	5,360	36.2%	6064	40.9%	6,448	43.5%
2016	13,326	2,045	15.3%	3,738	28.1%	4,749	35.6%	5,225	39.2%	5,495	41.2%
2017	14,460	2,077	14.4%	3,943	27.3%	4,867	33.7%	5,371	37.1%	5,834	40.3%
2018	13,150	1,919	14.6%	3,339	25.4%	4,015	30.5%	4,594	34.9%		
2019	12,974	1,690	13.0%	2,951	22.7%	3,925	30.3%				
2020	10,694	1,207	11.3%	2,509	23.5%						
2021	9,360	1,288	13.8%								

	1st Year (2021)	2nd Year (2020)	3rd Year (2019)	4th Year (2018)	5th Year (2017)
PERCENT RETURNED WITHIN EACH RELEASE AGE GROUP (Based on Last Full Year's Returns)					
<=16	0.0%	0.0%	0.0%	0.0%	0.0%
17	0.0%	0.0%	0.0%	0.0%	0.0%
18	0.0%	0.1%	0.1%	0.2%	0.1%
19 - 20	0.3%	0.6%	0.9%	0.9%	1.2%
21 - 24	1.3%	2.6%	3.8%	4.5%	5.6%
25 - 29	2.2%	4.6%	6.5%	8.2%	8.8%
30 - 34	2.2%	5.0%	5.9%	7.6%	8.3%
35 - 39	1.9%	4.1%	5.4%	6.5%	7.0%
40 - 44	1.4%	2.5%	3.0%	3.5%	3.8%
45 - 49	0.8%	1.4%	2.1%	2.7%	2.9%
50 - 54	0.6%	1.0%	1.5%	1.7%	2.1%
55+	0.6%	0.9%	1.3%	1.4%	1.5%

STATE OFFENDERS RELEASED FROM ADULT INSTITUTIONS, LOCAL FACILITIES, AND WORK RELEASE CENTERS. AGE AT TIME OF RELEASE.

**Department of Public Safety and Corrections
INCARCERATION ONLY : Admissions/Releases Comparison 1994-2022**

	1994			1995			1996			1997			1998			1999		
	admits	releases	net total	admits	releases	net total	admits	releases	net total	admits	releases	net total	admits	releases	net total	admits	releases	net total
Jan	1092	850	242	1041	963	78	1133	956	177	1198	994	204	1256	1058	198	1434	1147	287
Feb	856	781	75	974	885	89	1115	926	189	1115	921	194	1226	1020	206	1139	1142	-3
Mar	1083	919	164	1168	1016	152	1183	1040	143	1362	991	371	1387	1081	306	1468	1181	287
Apr	923	861	62	1095	932	163	1139	997	142	1332	1036	296	1401	1085	316	1316	1194	122
May	1105	903	202	1061	912	149	1278	1088	190	1362	1015	347	1342	1123	219	1357	1152	205
Jun	1027	957	70	1091	1015	76	1000	967	33	1230	1025	205	1318	1054	264	1251	1192	59
Jul	1051	895	156	981	948	33	1070	1026	44	1304	1076	228	1398	1142	256	1197	1284	-87
Aug	938	870	68	1146	957	189	1074	974	100	1245	1063	182	1281	1124	157	1335	1289	46
Sep	1114	891	223	1182	925	257	1135	964	171	1386	1104	282	1290	1147	143	1413	1255	158
Oct	1093	892	201	1053	1059	-6	1280	987	293	1350	1060	290	1231	1143	88	1257	1293	-36
Nov	969	875	94	1003	925	78	1018	963	55	1097	1059	38	1262	1095	167	1185	1082	103
Dec	813	943	-130	833	990	-157	1105	949	156	1075	1151	-76	1236	1176	60	1009	1140	-131
TOTAL	12064	10637	1427	12628	11527	1101	13530	11837	1693	15056	12495	2561	15628	13248	2380	15361	14351	1010

	2000			2001			2002			2003			2004			2005		
	admits	releases	net total	admits	releases	net total	admits	releases	net total	admits	releases	net total	admits	releases	net total	admits	releases	net total
Jan	1410	1191	219	1419	1220	199	1374	1188	186	1367	1259	108	1454	1210	244	1428	1275	153
Feb	1470	1144	326	1305	1196	109	1237	1220	17	1447	1250	197	1219	1273	-54	1150	1246	-96
Mar	1411	1191	220	1411	1260	151	1360	1220	140	1382	1331	51	1582	1281	301	1500	1310	190
Apr	1178	1198	-20	1307	1234	73	1479	1202	277	1352	1221	131	1446	1266	180	1427	1279	148
May	1437	1252	185	1437	1212	225	1388	1251	137	1370	1211	159	1399	1316	83	1564	1269	295
Jun	1285	1265	20	1166	1203	-37	1146	1201	-55	1345	1308	37	1264	1311	-47	1368	1220	148
Jul	1298	1231	67	1247	1313	-66	1344	1465	-121	1401	1248	153	1265	1313	-48	1217	1298	-81
Aug	1453	1235	218	1395	1298	97	1403	1238	165	1294	1296	-2	1448	1262	186	1501	1279	222
Sep	1426	1161	265	1338	1179	159	1285	1203	82	1477	1245	232	1258	1209	49	815	1427	-612
Oct	1403	1294	109	1359	1276	83	1259	1251	8	1482	1401	81	1362	1342	20	1089	1306	-217
Nov	1222	1221	1	1163	1141	22	1154	1327	-173	1142	1221	-79	1309	1259	50	1081	1266	-185
Dec	1053	1197	-144	1026	1236	-210	1119	1288	-169	1074	1305	-231	1019	1359	-340	866	1190	-324
TOTAL	16046	14580	1466	15573	14768	805	15548	15054	494	16133	15296	837	16025	15401	624	15006	15365	-359

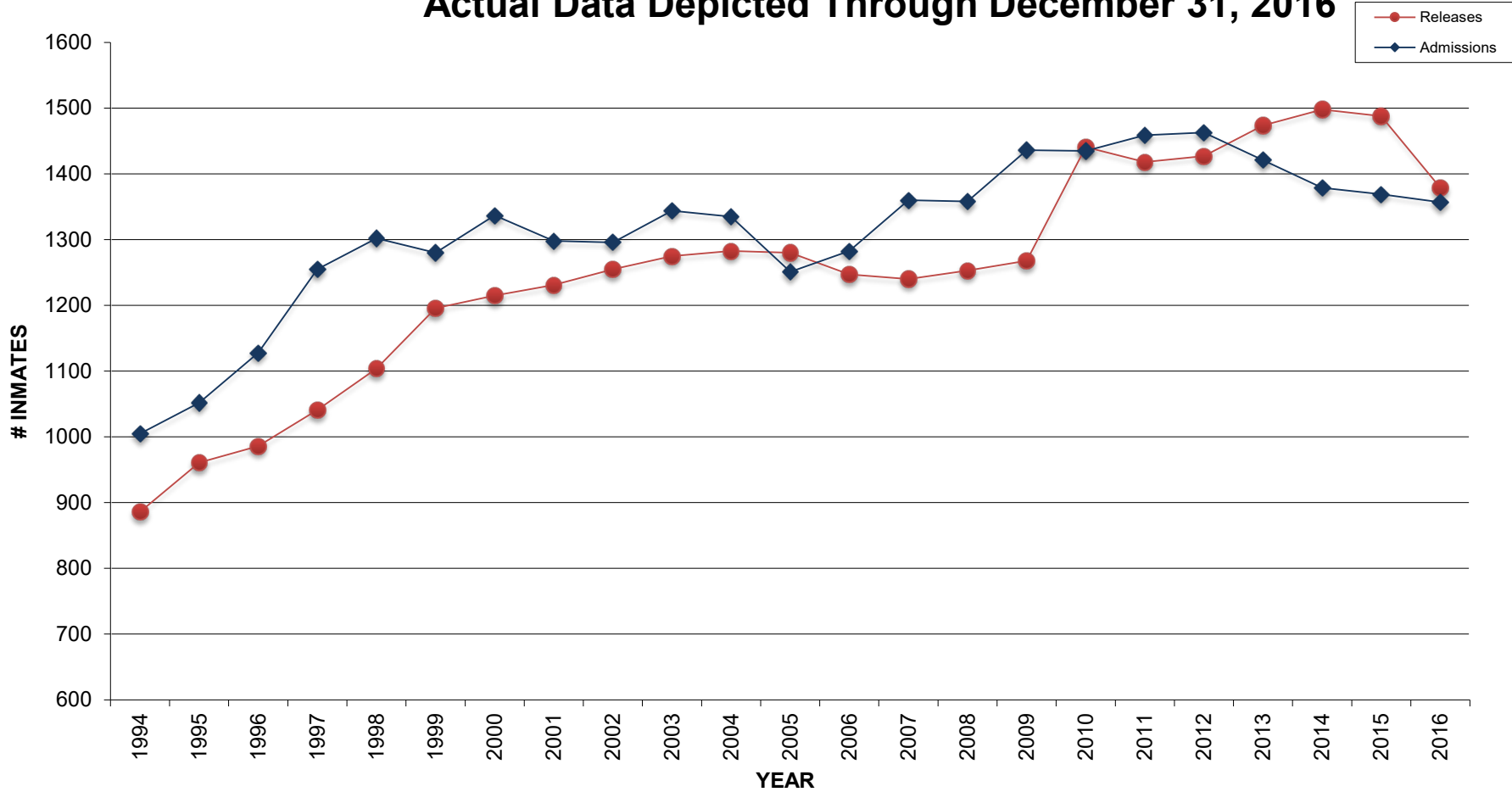
	2006			2007			2008			2009			2010			2011		
	admits	releases	net total	admits	releases	net total	admits	releases	net total	admits	releases	net total	admits	releases	net total	admits	releases	net total
Jan	1213	1241	-28	1347	1204	143	1468	1276	192	1413	1289	124	1469	1338	131	1593	1456	137
Feb	1171	1185	-14	1320	1184	136	1345	1242	103	1318	1210	108	1273	1249	24	1470	1377	93
Mar	1449	1221	228	1480	1309	171	1420	1246	174	1572	1248	324	1558	1346	212	1497	1440	57
Apr	1125	1280	-155	1353	1214	139	1423	1263	160	1441	1328	113	1422	1494	-72	1443	1423	20
May	1449	1263	186	1520	1232	288	1327	1194	133	1445	1224	221	1510	1565	-55	1495	1415	80
Jun	1303	1241	62	1300	1243	57	1362	1169	193	1386	1257	129	1391	1409	-18	1366	1428	-62
Jul	1120	1267	-147	1286	1150	136	1451	1241	210	1489	1266	223	1308	1438	-130	1349	1398	-49
Aug	1523	1232	291	1522	1283	239	1557	1317	240	1607	1242	365	1571	1367	204	1666	1430	236
Sep	1384	1245	139	1383	1215	168	1135	1231	-96	1597	1241	356	1668	1346	322	1661	1370	291
Oct	1392	1249	143	1548	1301	247	1587	1290	297	1499	1292	207	1510	1832	-322	1510	1492	18
Nov	1276	1202	74	1202	1305	-103	1099	1218	-119	1371	1339	32	1272	1421	-149	1338	1373	-35
Dec	996	1332	-336	1048	1235	-187	1121	1345	-224	1099	1278	-179	1235	1490	-255	1123	1416	-293
TOTAL	15401	14958	443	16309	14875	1434	16295	15032	1263	17237	15214	2023	17187	17295	-108	17511	17018	493

	2012 #			2013			2014			2015			2016			2017		
	admits	releases	net total	admits	releases	net total	admits	releases	net total	admits	release	net total	admits	release	net total	admits	release	net total
Jan	1574	1423	151	1602	1450	152	1426	1469	-43	1365	1601	-236	1445	1339	106	1434	1420	14
Feb	1572	1323	249	1337	1418	-81	1426	1421	5	1250	1461	-211	1305	1318	-13	1274	1316	-42
Mar	1672	1464	208	1369	1426	-57	1385	1467	-82	1668	1558	110	1396	1386	10	1527	1411	116
Apr	1393	1410	-17	1510	1398	112	1456	1485	-29	1479	1550	-71	1318	1403	-85	1242	1409	-167
May	1687	1469	218	1562	1538	24	1467	1460	7	1297	1522	-225	1498	1423	75	1448	1360	88
Jun	1386	1493	-107	1278	1472	-194	1258	1511	-253	1388	1606	-218	1306	1437	-131	1372	1460	-88
Jul	1317	1413	-96	1366	1572	-206	1459	1510	-51	1359	1439	-80	1340	1437	-97	1163	1368	-205
Aug	1515	1437	78	1560	1538	22	1431	1365	66	1493	1511	-18	1429	1375	54	1550	1419	131
Sep	1486	1406	80	1511	1504	7	1521	1543	-22	1377	1355	22	1593	1397	196	1444	1217	227
Oct	1571	1442	129	1586	1555	31	1442	1636	-194	1388	1419	-31	1391	1326	65	1425	1154	271
Nov	1298	1394	-96	1251	1394	-143	1118	1498	-380	1212	1380	-168	1159	1357	-198	1400	3221	-1821
Dec	1081	1448	-367	1121	1425	-304	1154	1607	-453	1155	1448	-293	1098	1312	-214	1164	1355	-191
TOTAL	17552	17122	430	17053	17690	-637	16543	17972	-1429	16431	17850	-1419	16278	16510	-232	16443	18110	-1667

	2018			2019			2020			2021			2022			Totals		
	admits	release	net total	admits	release	net total	admits	release	net total	admits	release	net total	admits	release	net total	admits	releases	net total
Jan	1210	1288	-78	1474	1536	-62	1434	1436	-2	930	1028	-98	985	1026	-41	35639	26673	8966
Feb	1226	1342	-116	1377	1402	-25	1140	1233	-93	879	898	-19	1191	952	239	32917	31452	1465
Mar	1399	1461	-62	1283	1533	-250	870	1416	-546	1185	1189	-4	1281	1088	193	36972	33337	3635
Apr	1388	1490	-102	1343	1438	-95	302	1336	-1034	1095	1132	-37	1190	1111	79	34731	33090	1641
May	1487	1476	11	1498	1480	18	468	1432	-964	1088	1034	54	1289	1088	201	36790	33325	3465
Jun	1168	1498	-330	1269	1462	-193	743	1134	-391	1029	1059	-30	1119	1177	-58	26107	27194	-1087
Jul	1309	1511	-202	1171	1390	-219	848	934	-86	994	1044	-50	997	1109	-112	26259	27268	-1009
Aug	1592	1468	124	1494	1377	117	649	937	-288	937	1006	-69	1384	1130	254	30004	26969	3035
Sep	1308	1349	-41	1442	1325	117	838	985	-147	978	1059	-81	1351	1195	156	28109	26168	1941
Oct	1541	1449	92	1521	1414	107	877	1084	-207	995	1022	-27	1316	1201	115	28865	27721	1144
Nov	1179	1369	-190	1173	1250	-77	752	955	-203	1048	969	79	1095	1032	63	24419	28156	-3737
Dec	1187	1331	-144	1203	1245	-42	769	1099	-330	1036	1143	-107	980	1266				

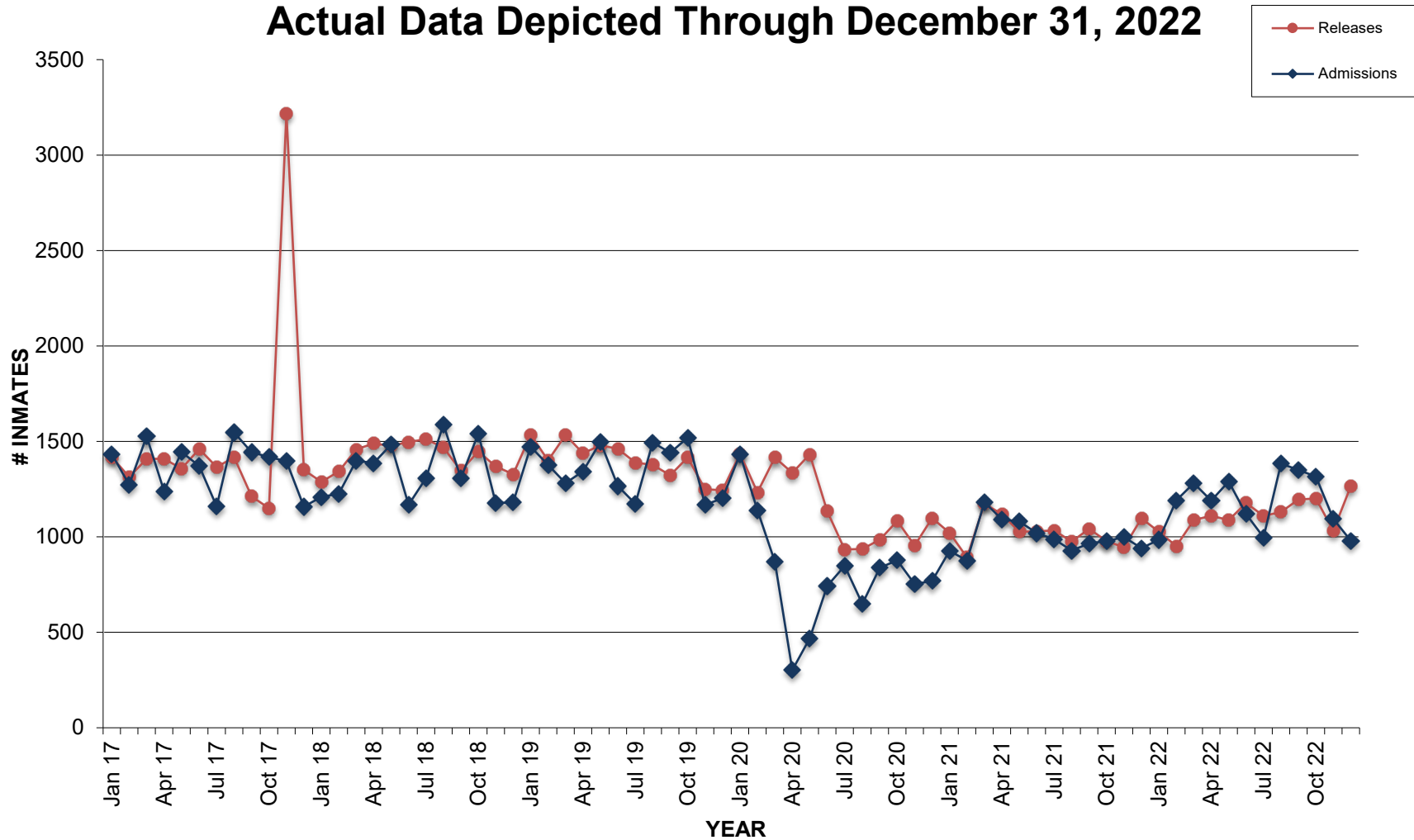
INCARCERATION ONLY: ADMISSIONS/RELEASES COMPARISON (Yearly Average) FOR 1994 - 2016

Actual Data Depicted Through December 31, 2016



INCARCERATION ONLY: ADMISSIONS/RELEASES COMPARISON FOR 2016 - 2022

Actual Data Depicted Through December 31, 2022



Louisiana Dept. of Corrections Admissions Dashboard

- Year
- 2018
 - 2019
 - 2020
 - 2021
 - 2022

Number of Admissions: **14,178**

Parole Eligible

68.2%

GTPS Eligible

90.2%

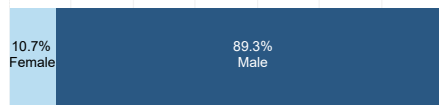
Incarceration Reason



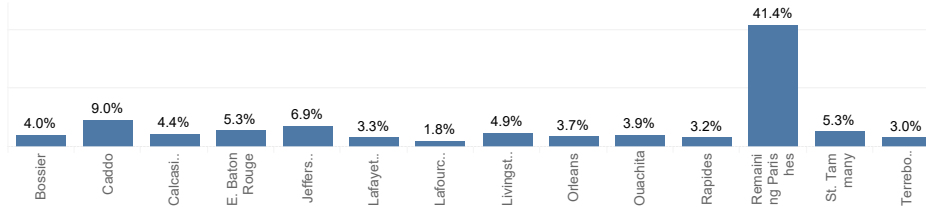
Race



Gender

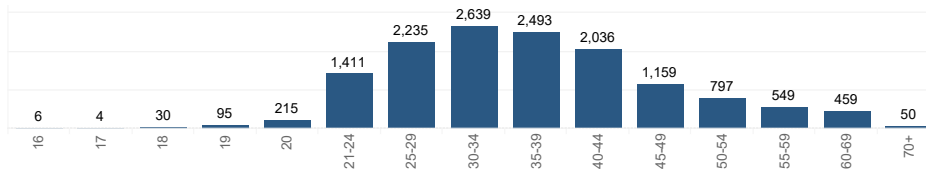


Parish of Commitment



Select a parish to add it to the Parish of Commitment chart
SELECT A PARISH

Age at Admission



Length to Serve (Months)

	Avg. Length to Diminution of Sent.	Avg. Length to Full Term Date	Avg. Length to Parole Eligibility	Select to see Lengths by Admission Reason
Violent	46.15	85.42	43.16	<input type="checkbox"/> New Felony <input type="checkbox"/> Revocations <input type="checkbox"/> Unknown
Property	11.37	41.46	8.51	
Drug	11.24	41.21	8.58	
Sex NonViolent	27.09	97.88	59.08	
All Others	12.44	44.27	9.65	
Overall Average	19.09	54.11	17.39	

Incarceration Reason by crime type

	New Felony	Revocation New Felony	Revocation Pending Charge	Technical Revocation	Grand Total
All Others	1,761	159	265	352	2,537
Drug	2,063	481	480	971	3,996
Property	1,661	585	641	855	3,742
Sex NonViolent	363	18	9	39	429
Violent	2,163	415	430	466	3,474
Grand Total	8,011	1,658	1,825	2,683	14,178

Louisiana Dept. of Corrections Release Dashboard

Select Release Year

- 2018
- 2019
- 2020
- 2021
- 2022

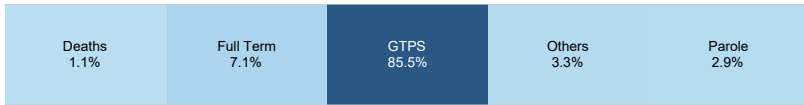
Number of Releases:

13,375

State vs Local



Release Type Total



By Admission Type



Race



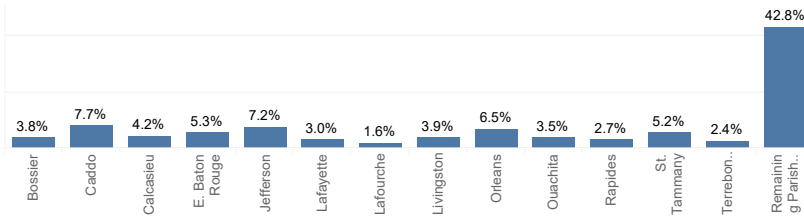
Gender



Time Served (Years)



Parish of Commitment



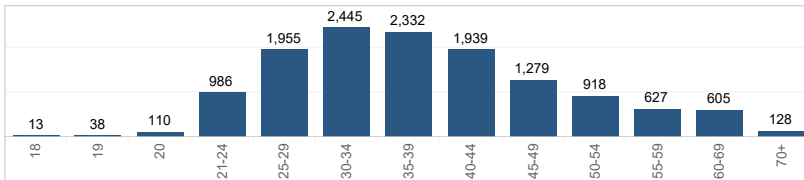
Select a parish to add it to the Parish of Commitment chart
Select a Parish

Release Counts by Crime Type

Violent	3,097
Property	3,587
Drug	3,835
Sex Nonviolent	306
All Others	2,550

Select from drop down to see Crime Category by Avg. Time Served or Avg. Sentence Length
Time Served

Age at Release

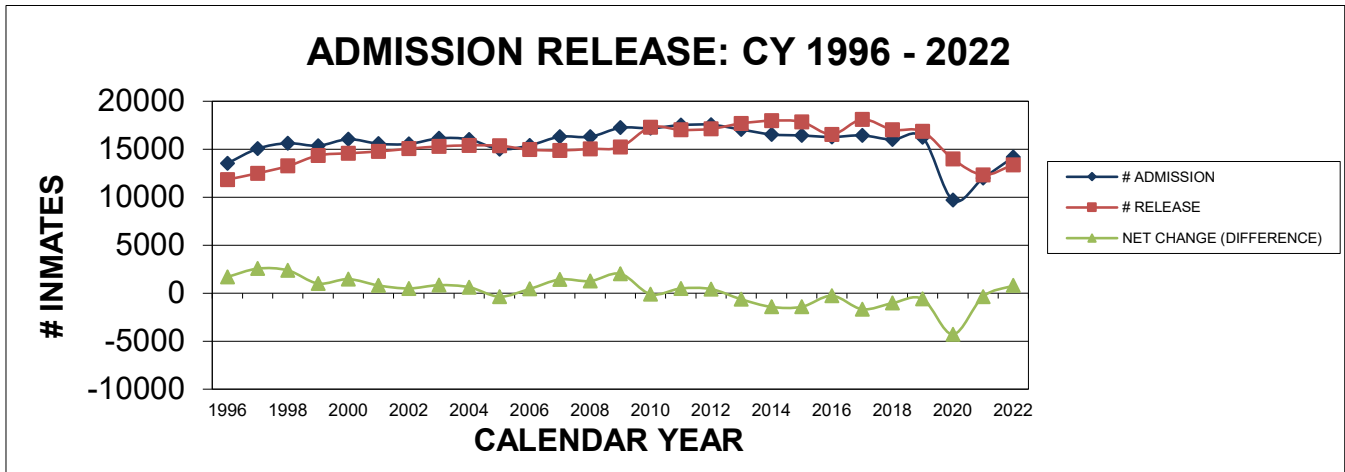


Crime Category by Time Served (Years)

Violent	6.6
Property	1.1
Drug	1.1
Sex Nonviolent	5.0
All Others	1.1

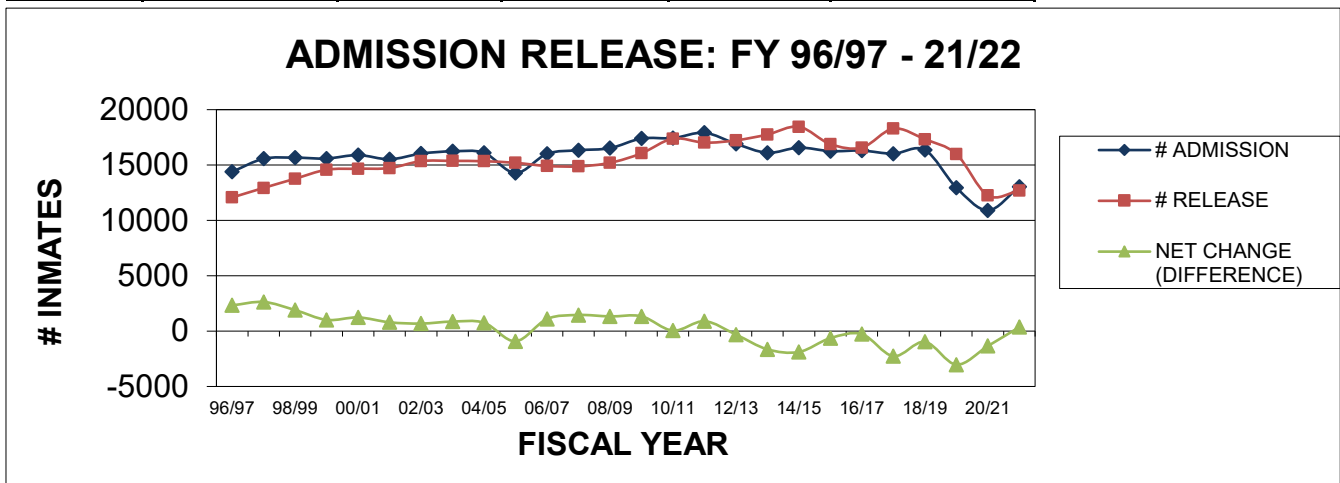
DEPARTMENT OF PUBLIC SAFETY AND CORRECTIONS ADMISSIONS/RELEASES COMPARISON CY 1996-Current

CALENDAR YEAR	# ADMISSION	% CHANGE	# RELEASE	% CHANGE	NET CHANGE (DIFFERENCE)
1996	13530	7.14%	11837	2.69%	1693
1997	15056	11.28%	12495	5.56%	2561
1998	15628	3.80%	13248	6.03%	2380
1999	15361	-1.71%	14351	8.33%	1010
2000	16046	4.46%	14580	1.60%	1466
2001	15573	-2.95%	14768	1.29%	805
2002	15548	-0.16%	15054	1.94%	494
2003	16133	3.76%	15296	1.61%	837
2004	16025	-0.67%	15401	0.69%	624
2005	15006	-6.36%	15365	-0.23%	-359
2006	15401	2.63%	14958	-2.65%	443
2007	16309	5.90%	14875	-0.55%	1434
2008	16295	-0.09%	15032	1.06%	1263
2009	17237	5.78%	15214	1.21%	2023
2010	17187	-0.29%	17295	13.68%	-108
2011	17511	1.89%	17018	-1.60%	493
2012	17552	0.23%	17122	0.61%	430
2013	17053	-2.84%	17690	3.32%	-637
2014	16543	-3.08%	17972	1.59%	-1429
2015	16431	-0.68%	17850	-0.68%	-1419
2016	16278	-0.94%	16545	-7.31%	-267
2017	16443	1.00%	18110	9.46%	-1667
2018	15994	-2.81%	17032	-5.95%	-1038
2019	16248	1.56%	16852	-1.06%	-604
2020	9690	-67.68%	13981	-17.04%	-4291
2021	11975	19.08%	12331	-11.80%	-356
2022	14178	15.54%	13375	8.47%	803
TOTAL	422231		415647		6584
AVG					700.20



DEPARTMENT OF PUBLIC SAFETY AND CORRECTIONS ADMISSIONS/RELEASES COMPARISON FY 96/97 - CURRENT

FISCAL YEAR	# ADMISSION	% CHANGE	# RELEASE	% CHANGE	NET CHANGE (DIFFERENCE)
96/97	14395	8.39%	12070	0.17%	2325
97/98	15567	8.14%	12934	7.16%	2633
98/99	15663	0.62%	13764	6.42%	1899
99/00	15590	-0.47%	14576	5.90%	1014
00/01	15900	1.99%	14664	0.60%	1236
01/02	15519	-2.40%	14725	0.42%	794
02/03	16033	3.31%	15352	4.26%	681
03/04	16234	1.25%	15373	0.14%	861
04/05	16098	-0.84%	15343	-0.20%	755
05/06	14279	-11.30%	15197	-0.95%	-918
06/07	16011	12.13%	14913	-1.87%	1098
07/08	16334	2.02%	14879	-0.23%	1455
08/09	16525	1.17%	15198	2.14%	1327
09/10	17396	5.27%	16059	5.67%	1337
10/11	17428	0.18%	17384	8.25%	44
11/12	17913	2.78%	17020	-2.09%	893
12/13	16916	-5.57%	17231	1.24%	-315
13/14	16106	-4.79%	17752	3.02%	-1646
14/15	16572	2.89%	18457	3.97%	-1885
15/16	16252	-1.93%	16886	-8.51%	-634
16/17	16303	0.31%	16575	-1.84%	-272
17/18	16024	-1.71%	18289	10.34%	-2265
18/19	16360	2.10%	17328	-5.25%	-968
19/20	12961	-20.78%	15988	-7.73%	-3027
20/21	10908	-33.33%	12255	-29.28%	-1347
21/22	13043	0.63%	12685	-20.66%	358
TOTAL	434179		426147		8032
AVG					1037.79



2022 Admissions by Parish of Conviction

Parish	Count
ACADIA	187
ALLEN	109
ASCENSION	210
ASSUMPTION	129
AVOYELLES	157
BEAUREGARD	210
BIENVILLE	69
BOSSIER	561
CADDO	1273
CALCASIEU	624
CALDWELL	90
CAMERON	12
CATAHOULA	50
CLAIBORNE	90
CONCORDIA	130
DESOTO	167
E. BATON ROUGE	758
E. CARROLL	13
E. FELICIANA	41
EVANGELINE	160
FRANKLIN	153
GRANT	172
IBERIA	223
IBERVILLE	95
JACKSON	35
JEFF DAVIS	93
JEFFERSON	982
LAFAYETTE	463
LAFOURCHE	253
LASALLE	92
LINCOLN	167
LIVINGSTON	699
MADISON	36
MOREHOUSE	75

Parish	Count
NATCHITOCHE	122
ORLEANS	524
OUACHITA	546
PLAQUEMINE	50
POINTE COUPEE	46
RAPIDES	453
RED RIVER	24
RICHLAND	120
SABINE	62
ST. BERNARD	127
ST. CHARLES	64
ST. HELENA	32
ST. JAMES	45
ST. JOHN-BAPTIST	78
ST. LANDRY	196
ST. MARTIN	123
ST. MARY	190
ST. TAMMANY	751
TANGIPAHOA	400
TENSAS	17
TERREBONNE	425
UNION	80
VERMILION	166
VERNON	129
W. BATON ROUGE	232
W. CARROLL	51
W. FELICIANA	22
WASHINGTON	233
WEBSTER	186
WINN	76
Unknown	30
	14178

2022 Releases by Parish of Conviction

Parish	Count
ACADIA	171
ALLEN	99
ASCENSION	185
ASSUMPTION	108
AVOUELLES	154
BEAUREGARD	157
BIENVILLE	60
BOSSIER	514
CADDO	1036
CALCASIEU	560
CALDWELL	58
CAMERON	6
CATAHOULA	63
CLAIBORNE	62
CONCORDIA	105
DESOTO	111
E. BATON ROUGE	705
E. CARROLL	10
E. FELICIANA	29
EVANGELINE	163
FRANKLIN	143
GRANT	155
IBERIA	203
IBERVILLE	85
JACKSON	40
JEFF DAVIS	70
JEFFERSON	966
LAFAYETTE	398
LAFOURCHE	215
LASALLE	81
LINCOLN	146
LIVINGSTON	523
MADISON	31
MOREHOUSE	72

Parish	Count
NATCHITOCHEs	84
ORLEANS	872
OUACHITA	472
PLAQUEMINE	43
POINTE COUPEE	42
RAPIDES	365
RED RIVER	24
RICHLAND	112
SABINE	58
ST. BERNARD	96
ST. CHARLES	67
ST. HELENA	20
ST. JAMES	32
ST. JOHN-BAPTIST	67
ST. LANDRY	202
ST. MARTIN	109
ST. MARY	178
ST. TAMMANY	699
TANGIPAHOA	359
TENSAS	15
TERREBONNE	323
UNION	98
VERMILION	145
VERNON	113
W. BATON ROUGE	164
W. CARROLL	47
W. FELICIANA	28
WASHINGTON	245
WEBSTER	211
WINN	67
Unknown	534
Total	13375