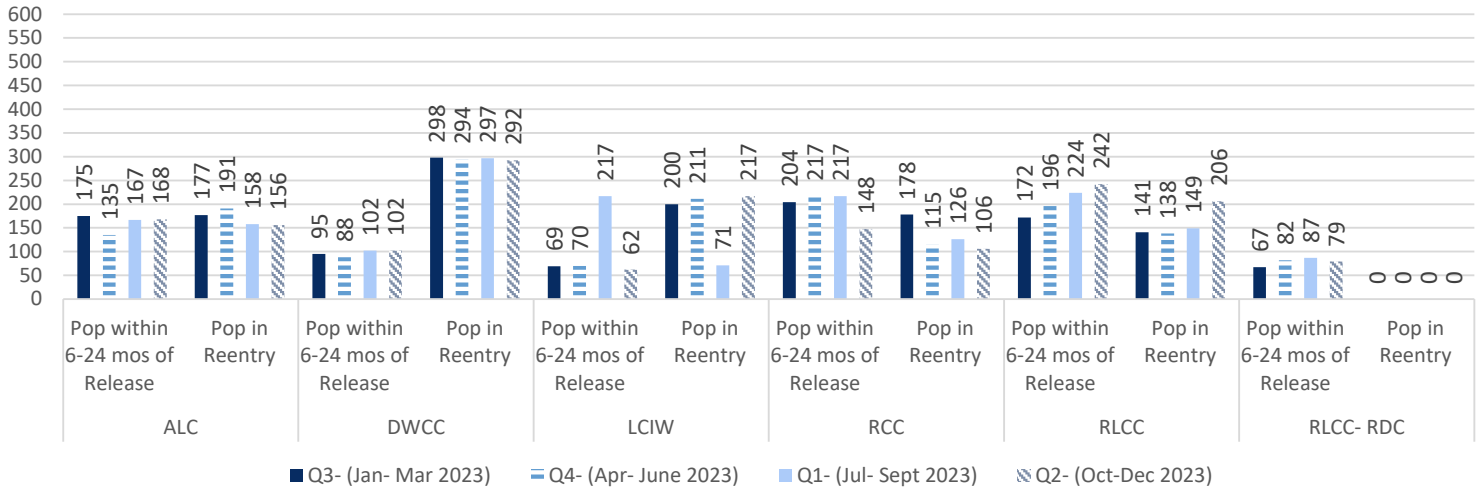


Reentry Services

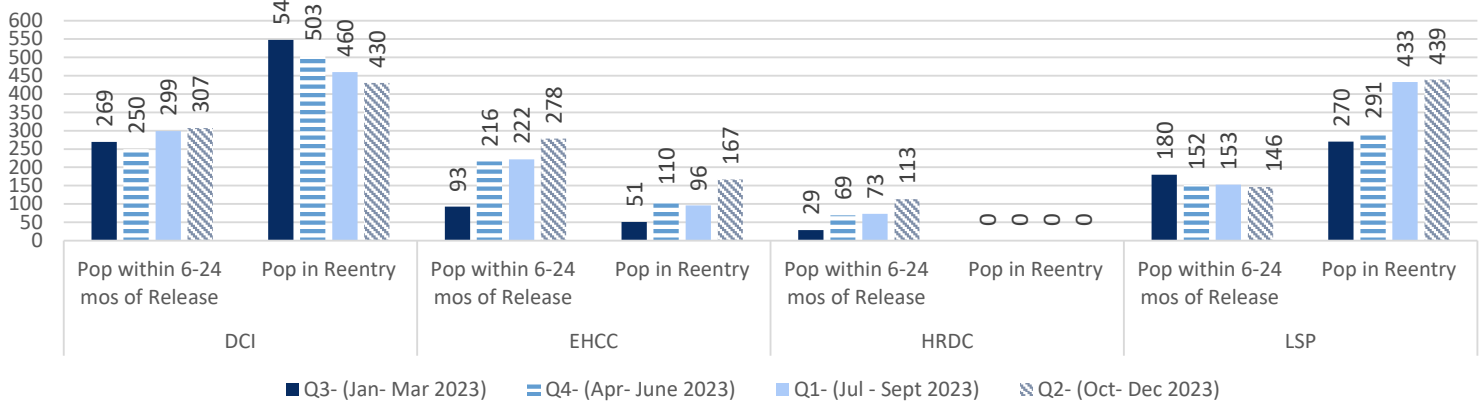
FY 23/24 - Quarter 2

REAP I

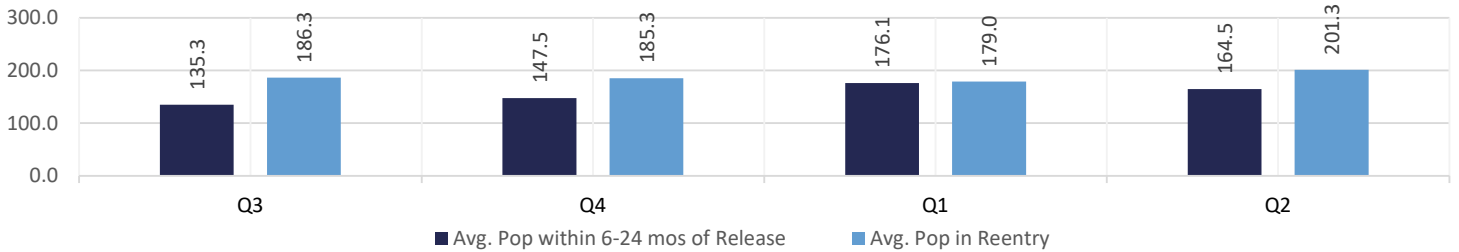
Population within 6-24 months of release*



Population within 6-24 months of release*

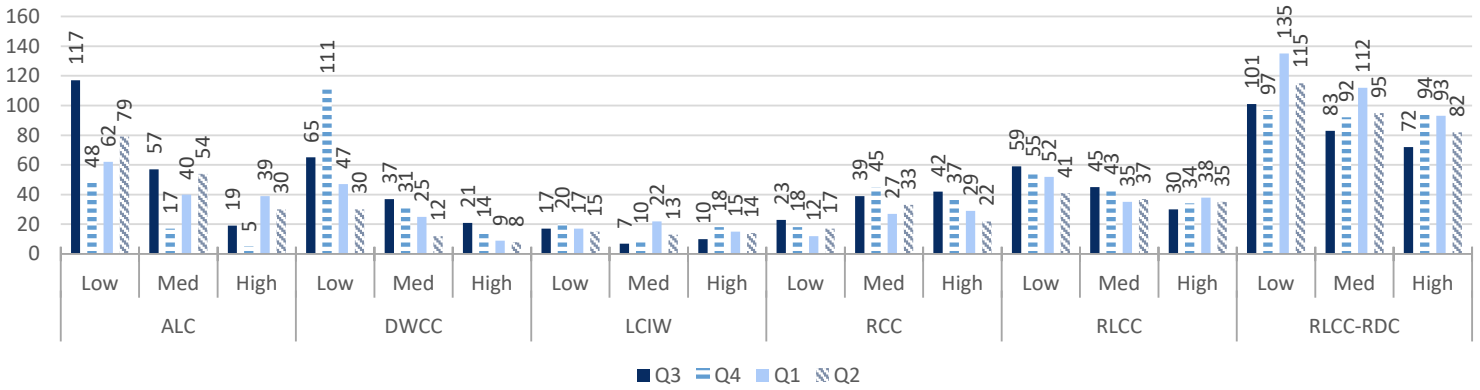


Averages of Total Population and Population within 6-24 mos of Release

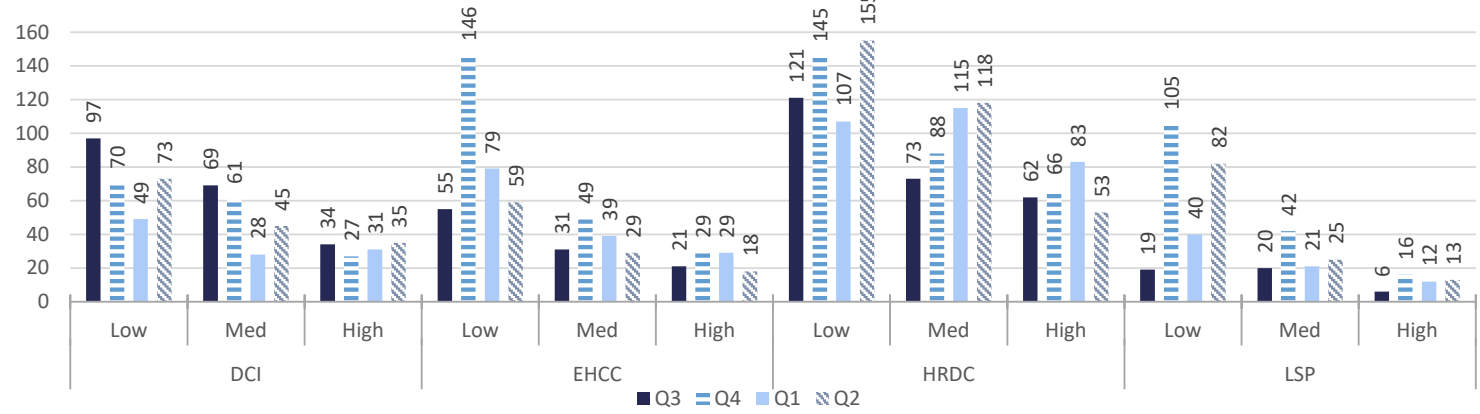


*Does not include local level offenders

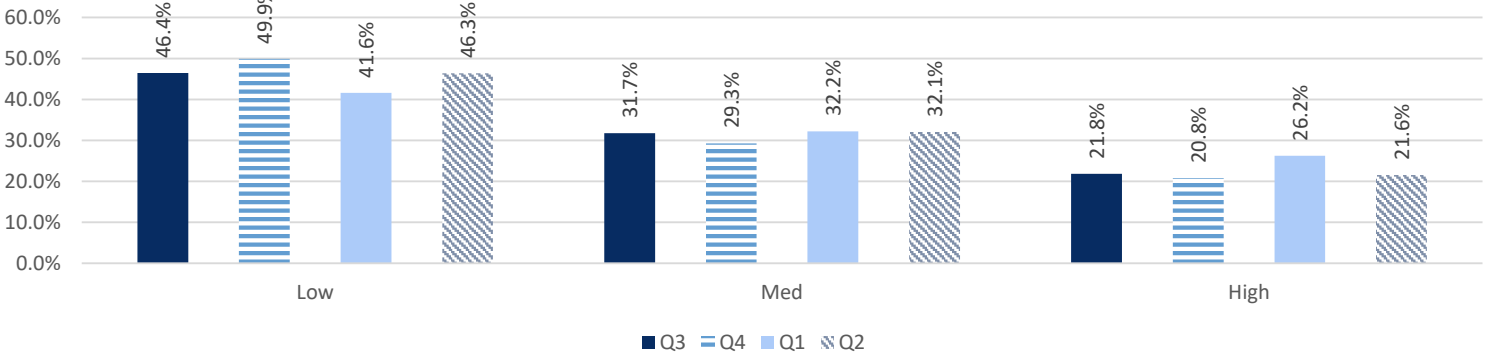
Intakes by Overall Risk



Intakes by Overall Risk



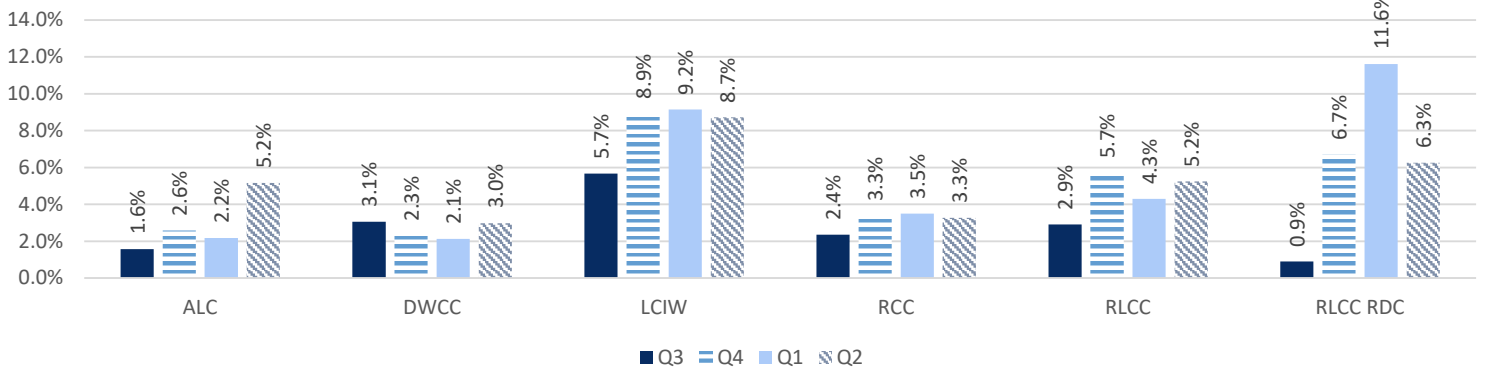
Total Intakes by Risk by Quarter
By Intakes



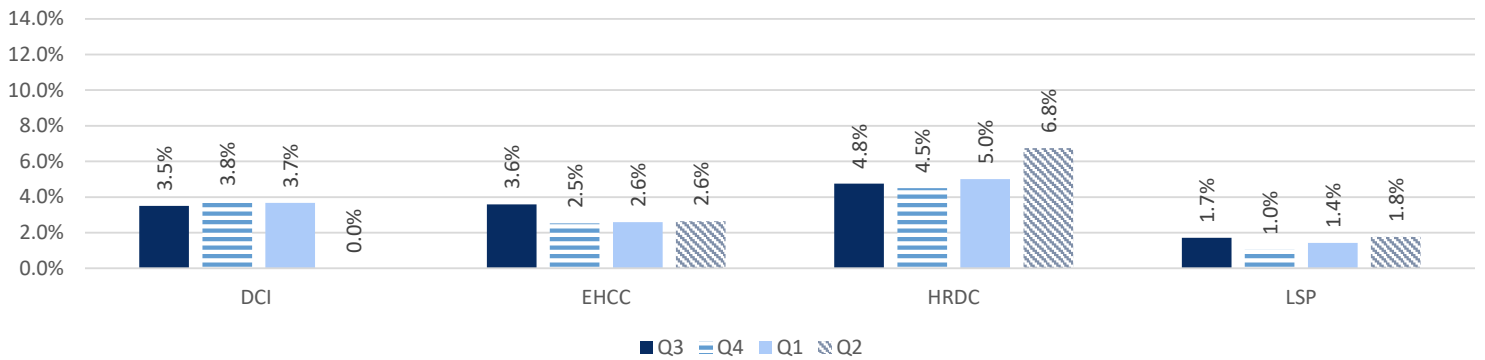
*Does not include local level offenders

REAP II

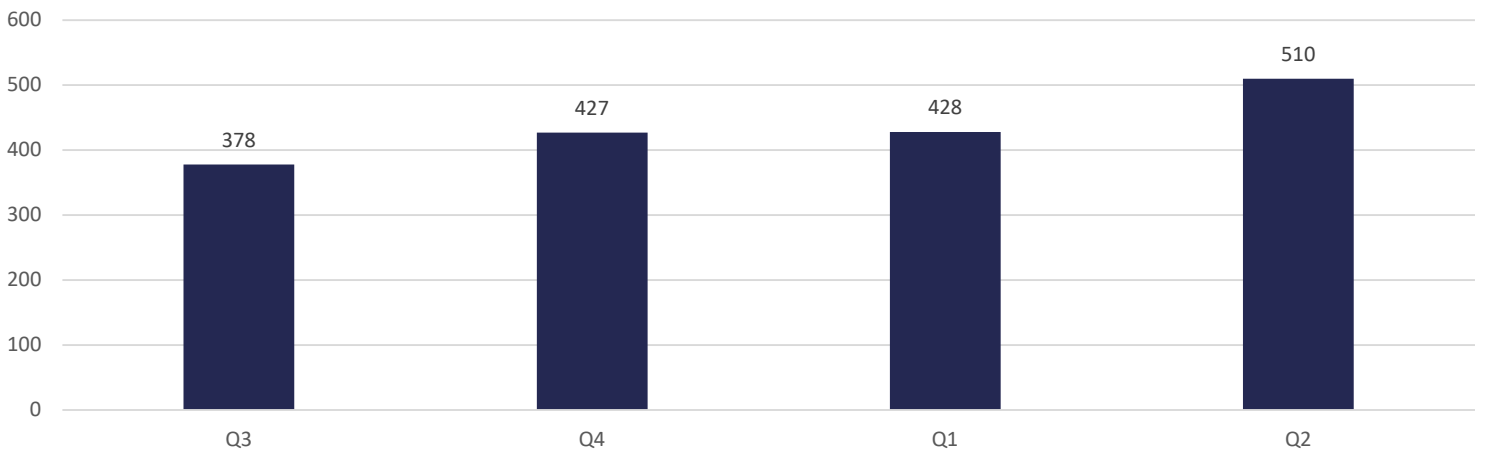
Releases from State Prisons per Quarter By Operational Capacity



Releases from State Prisons per Quarter By Operational Capacity

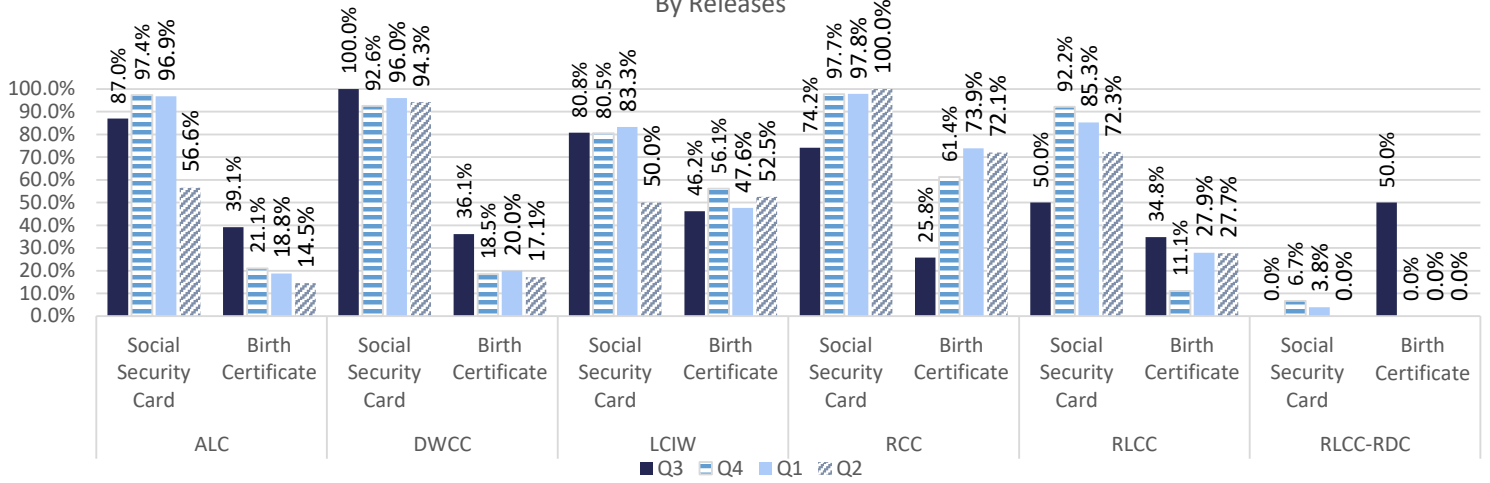


Total Releases from State Prisons per Quarter



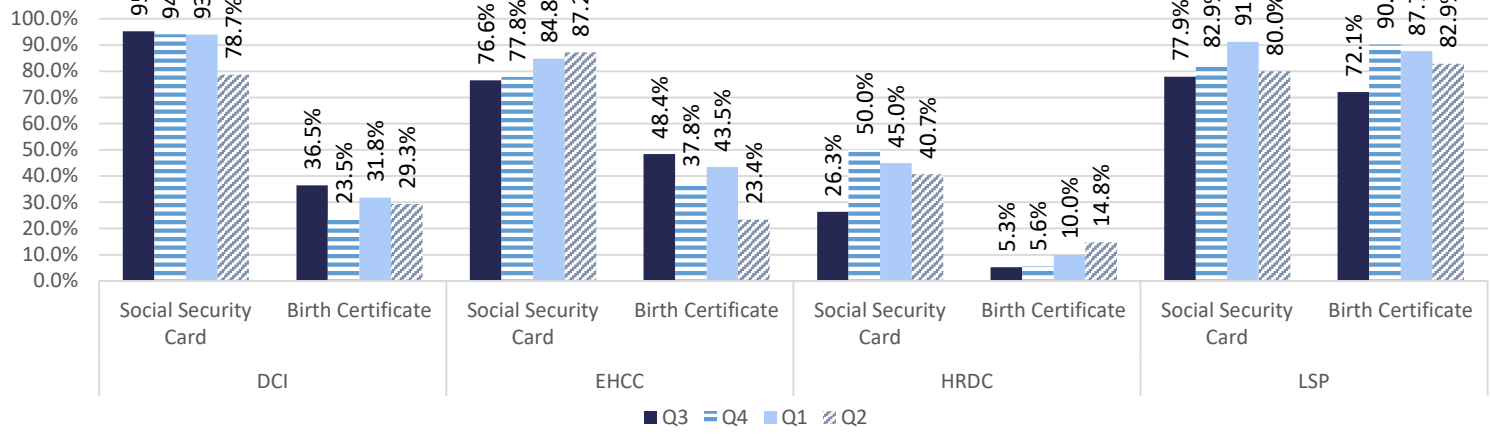
Released With Social Security Card or Birth Certificate

By Releases

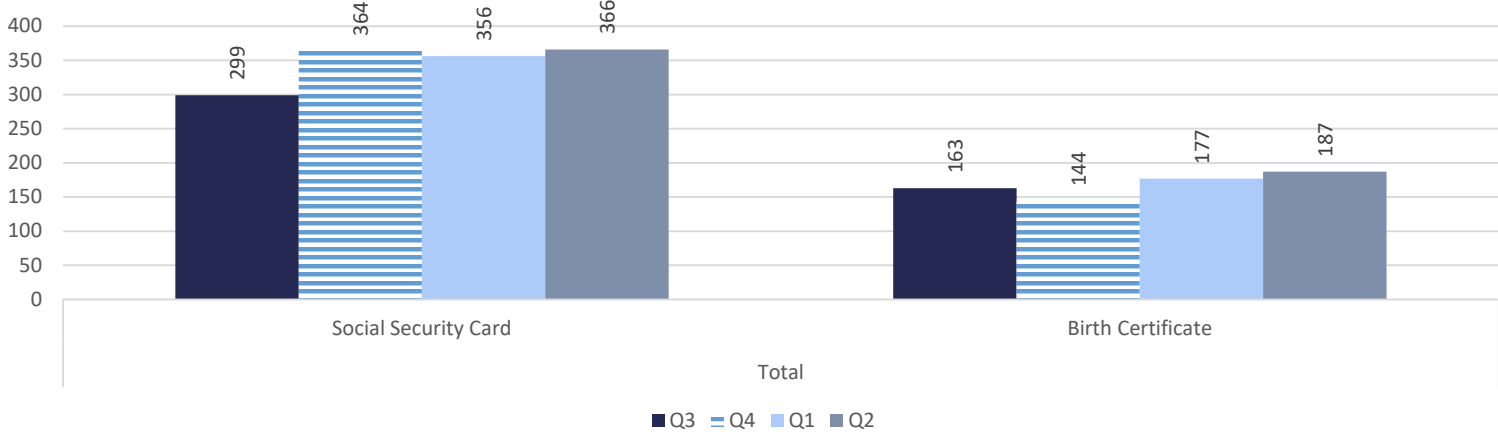


Released With Social Security Card or Birth Certificate

By Releases

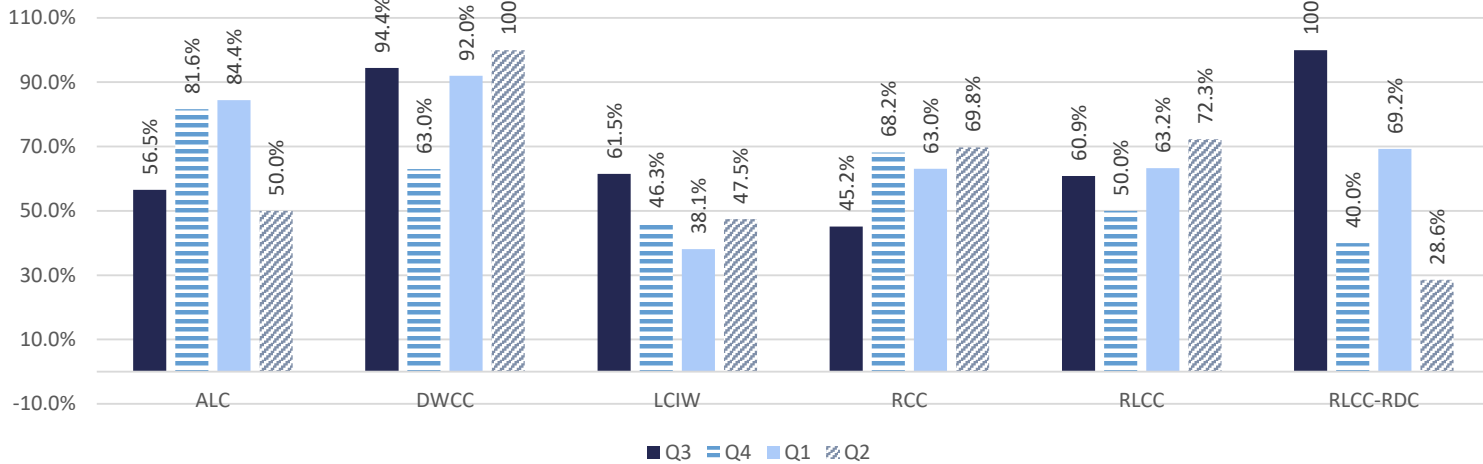


Social Security Card and Birth Certificate Totals



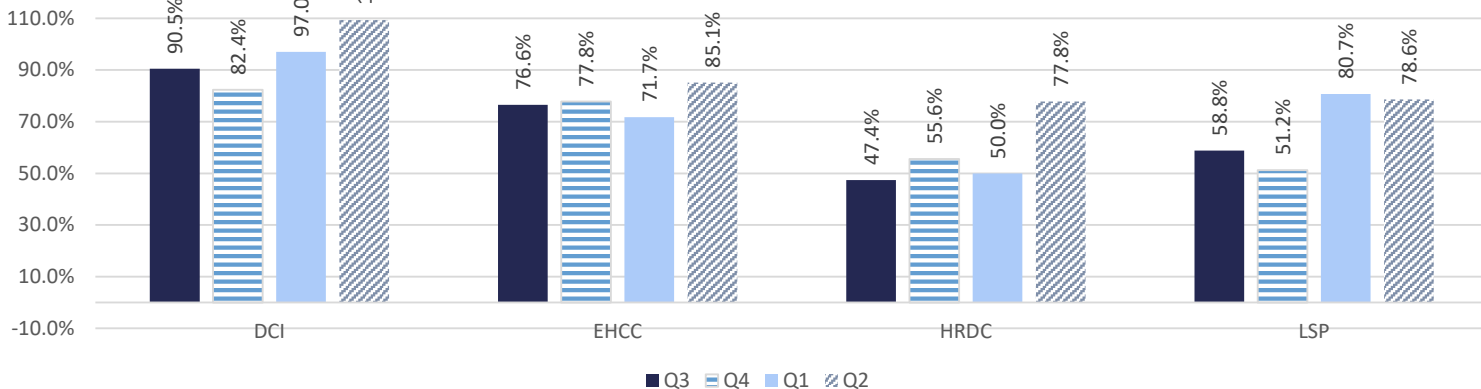
Released with State ID or Driver's License

By Releases

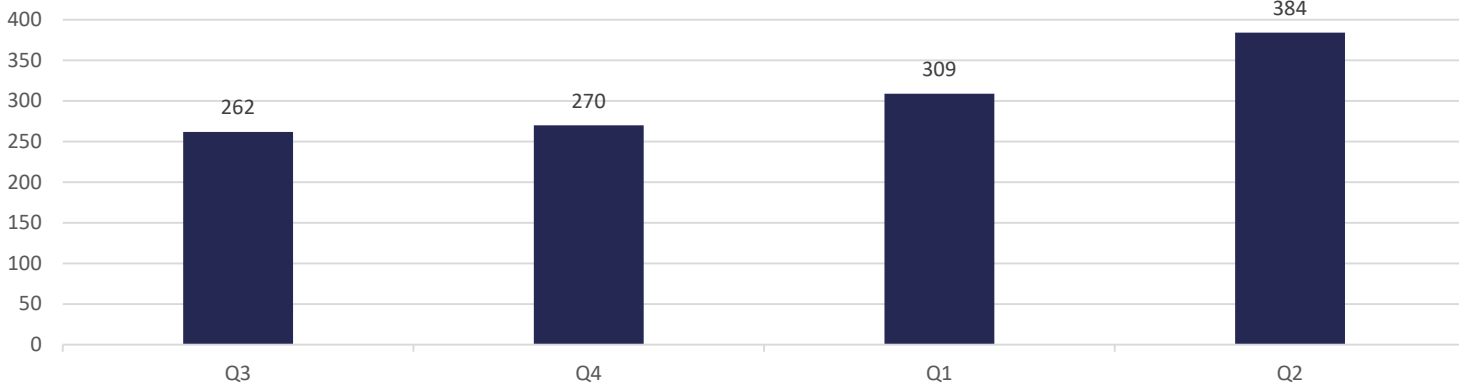


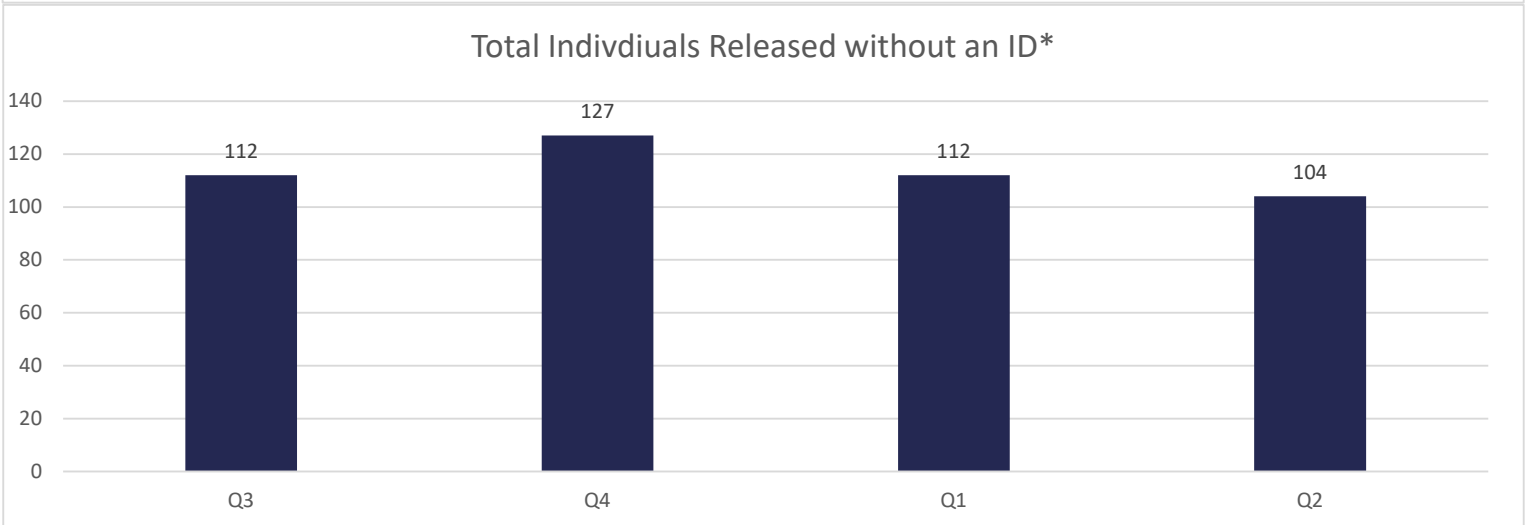
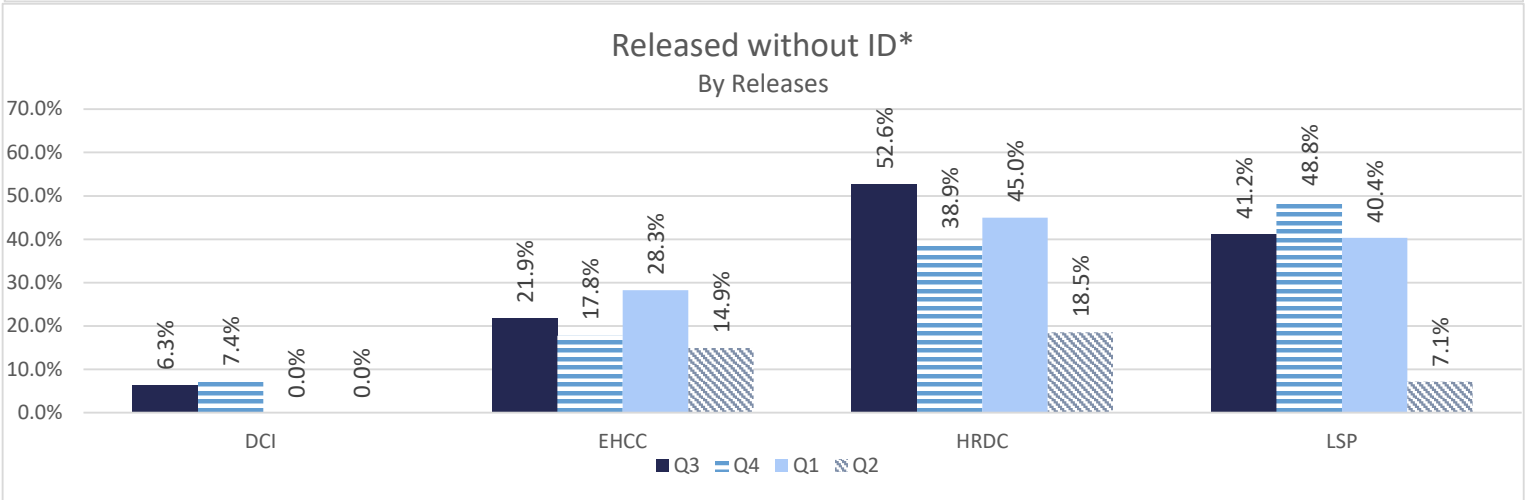
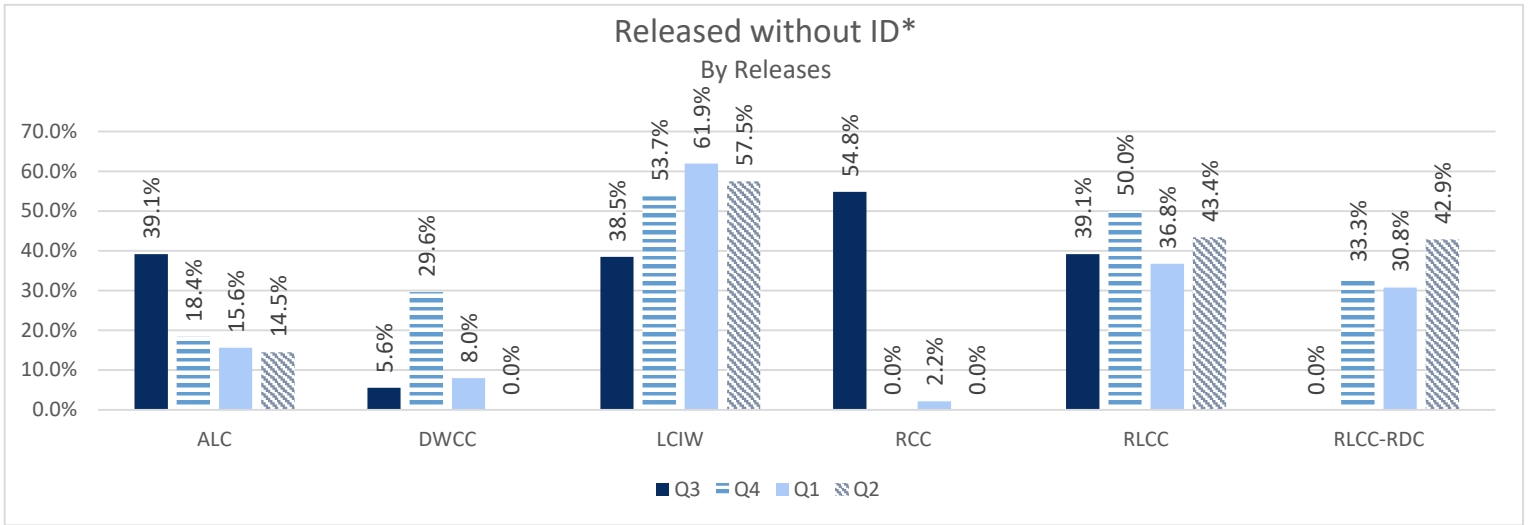
Released with State ID or Driver's License

By Releases



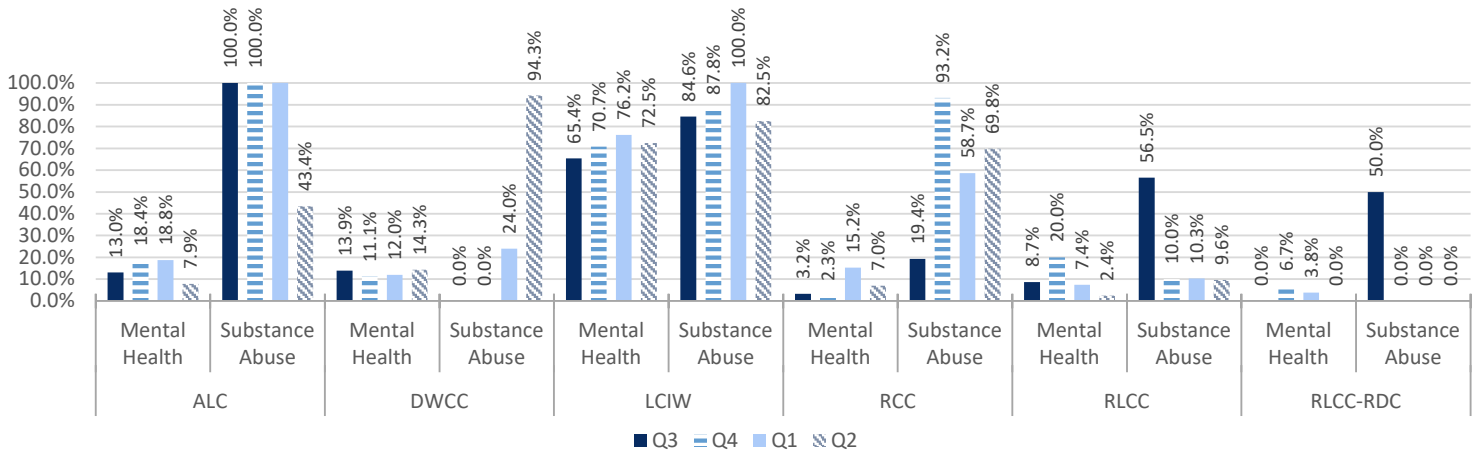
State ID or Driver's License Total



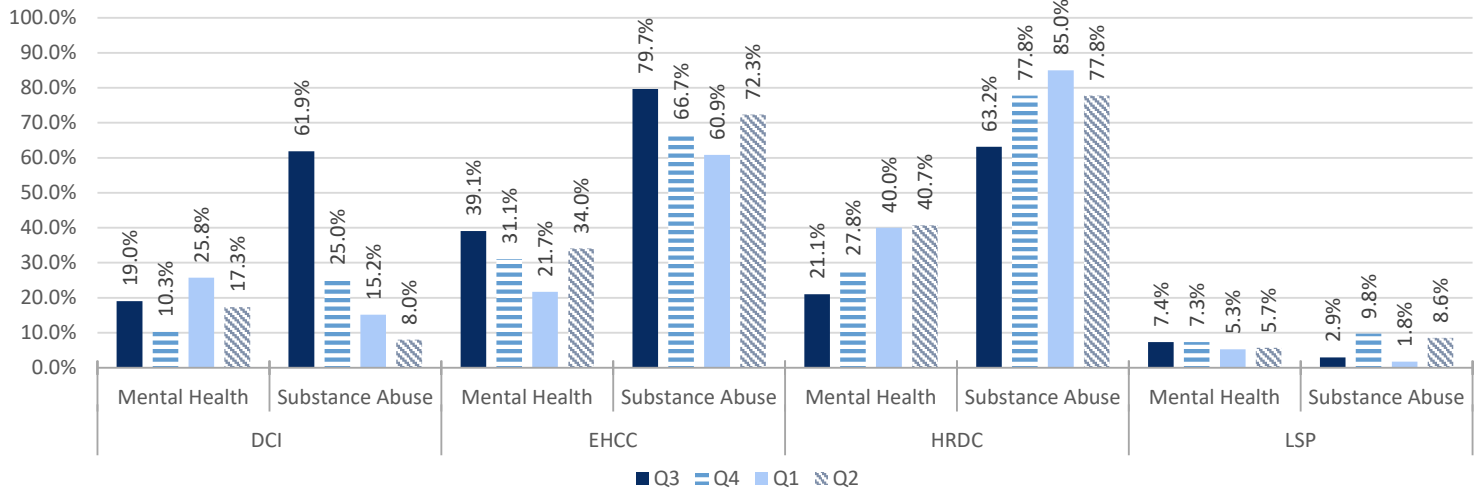


*Individuals released with no personal identification
(i.e. - State I.D., Social Security Card, Driver's license or Birth Certificate)

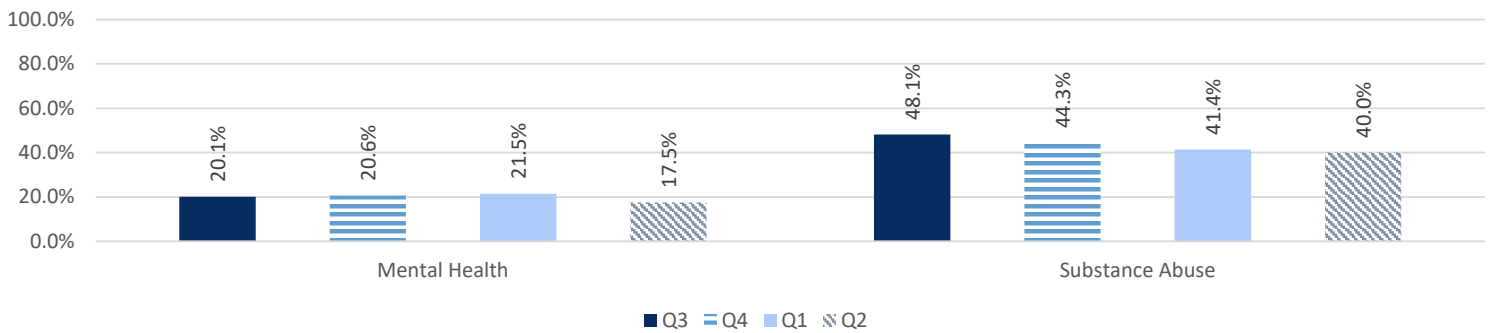
Referrals to Community Resources By Releases



Referrals to Community Resources By Releases

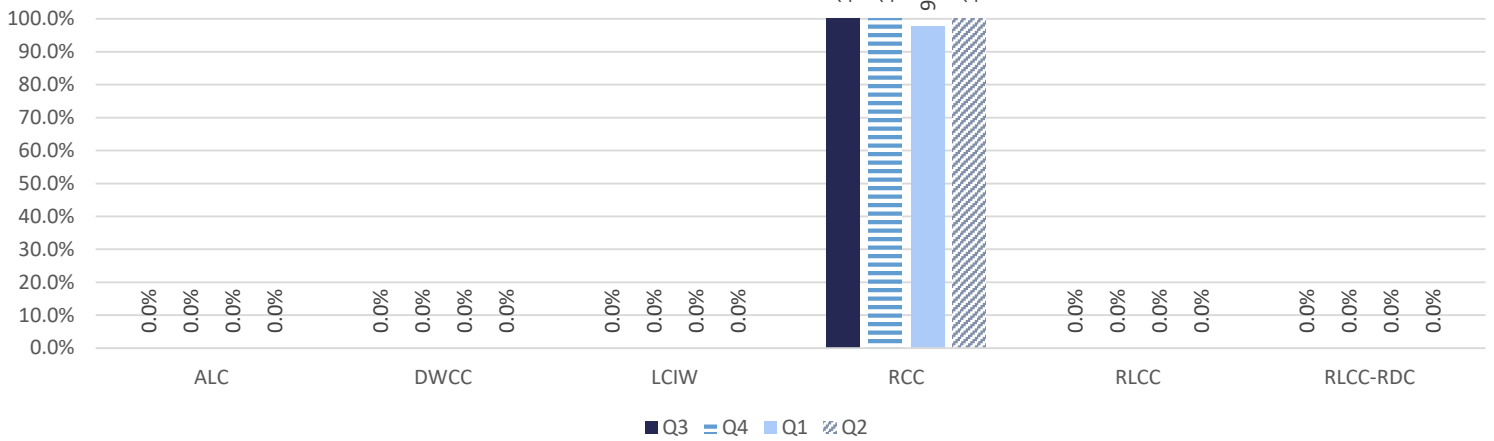


Total Referrals to Community Resources by Quarter By Releases



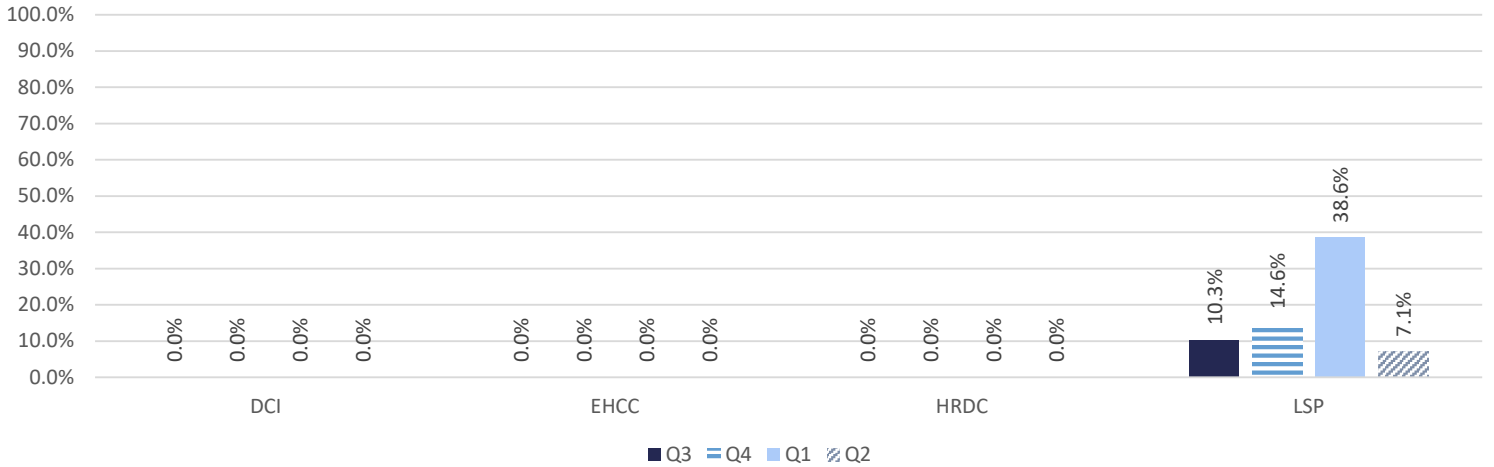
Referrals to Community Resources- Employment

By Releases

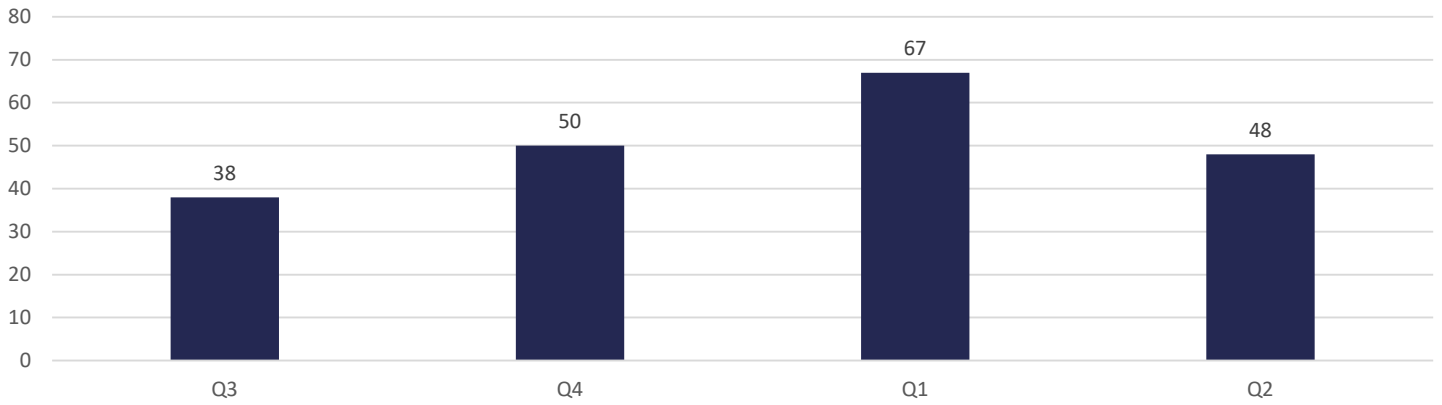


Referrals to Community Resources- Employment

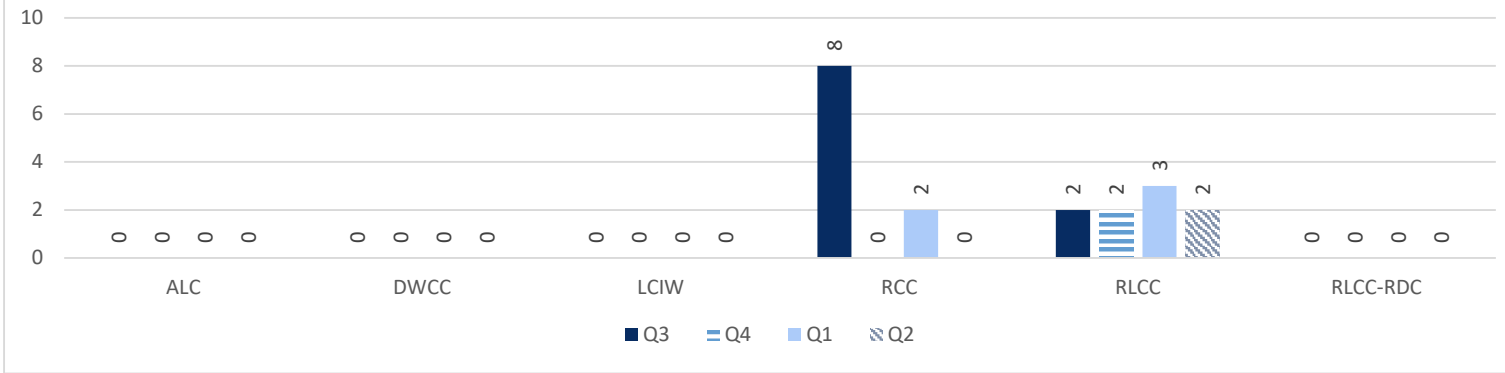
By Releases



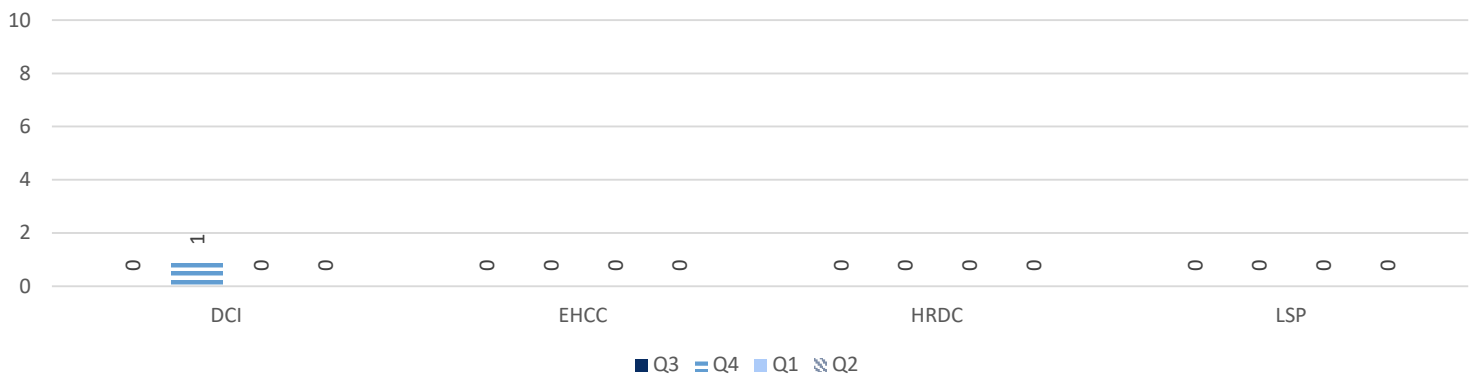
Referrals to Community Resources- Employment Total



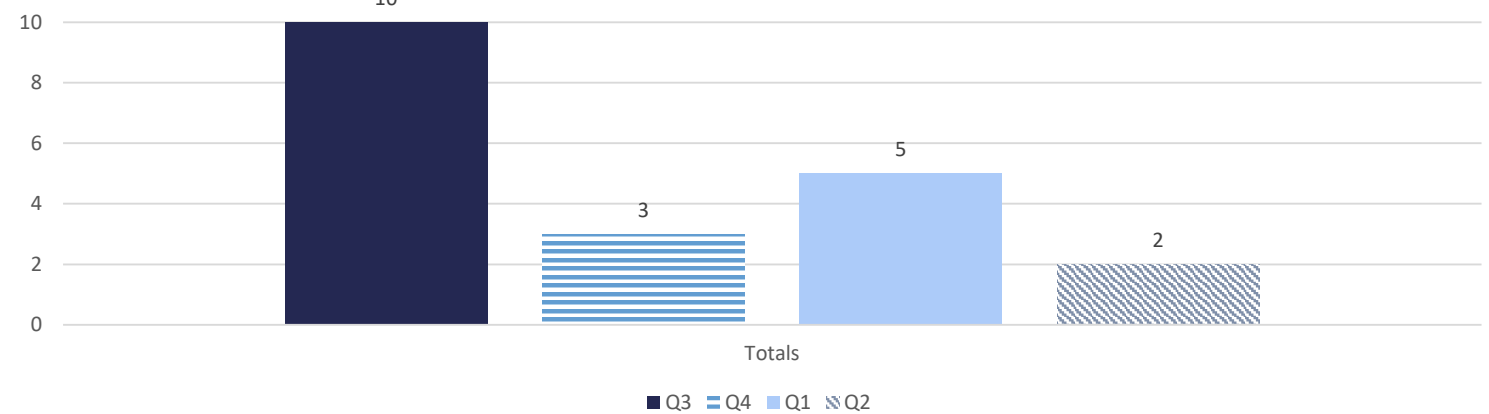
Refused Programming



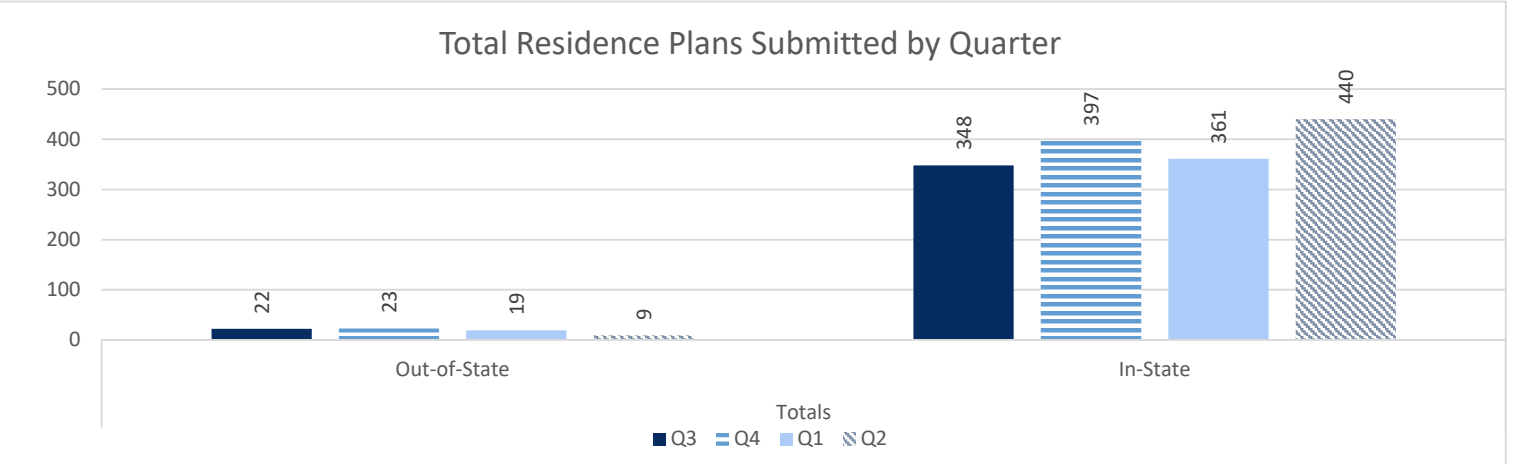
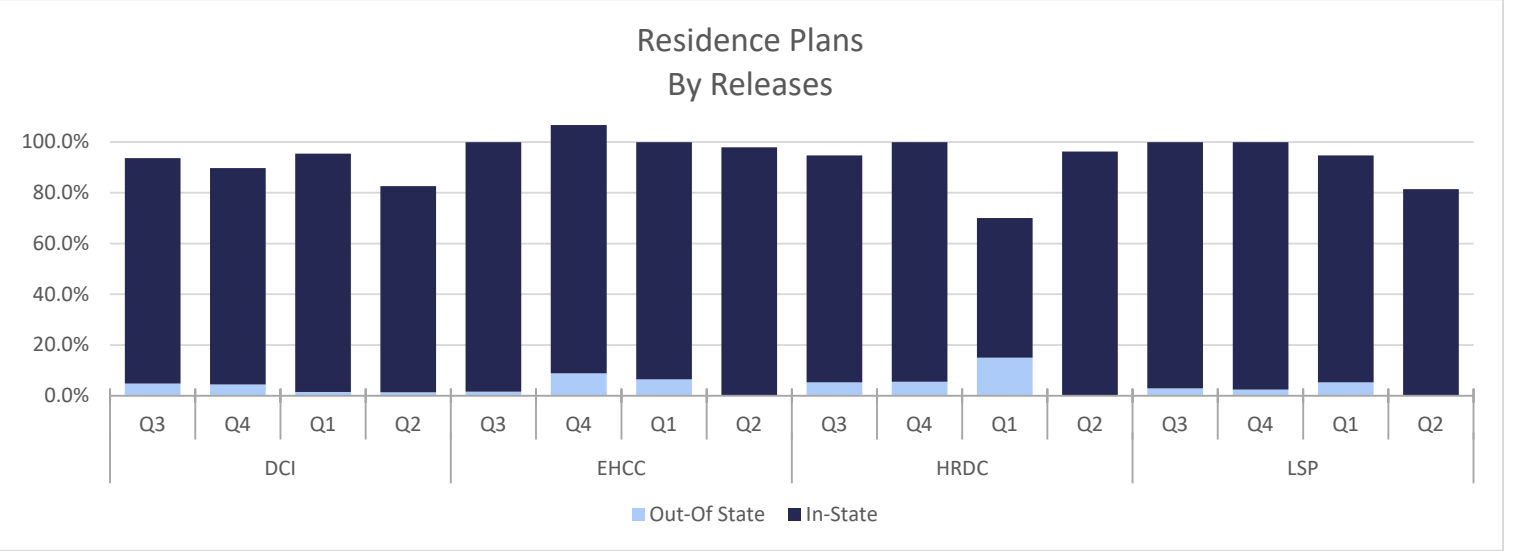
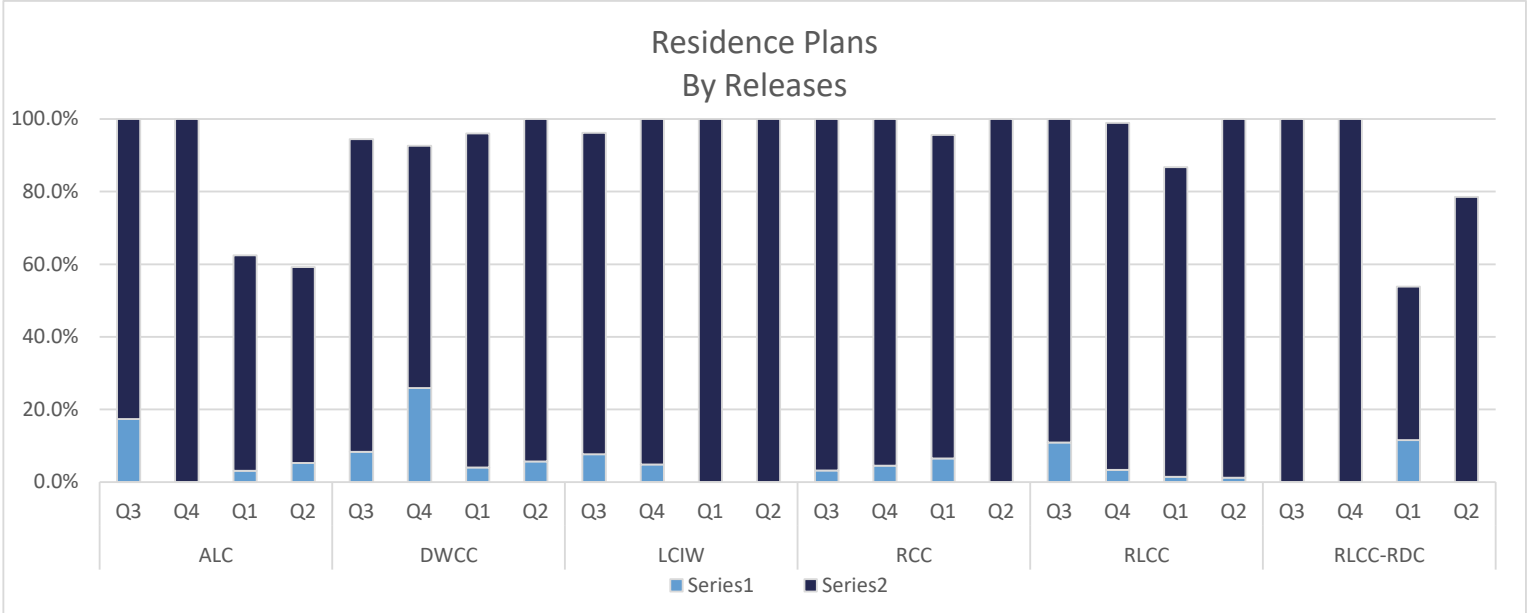
Refused Programming

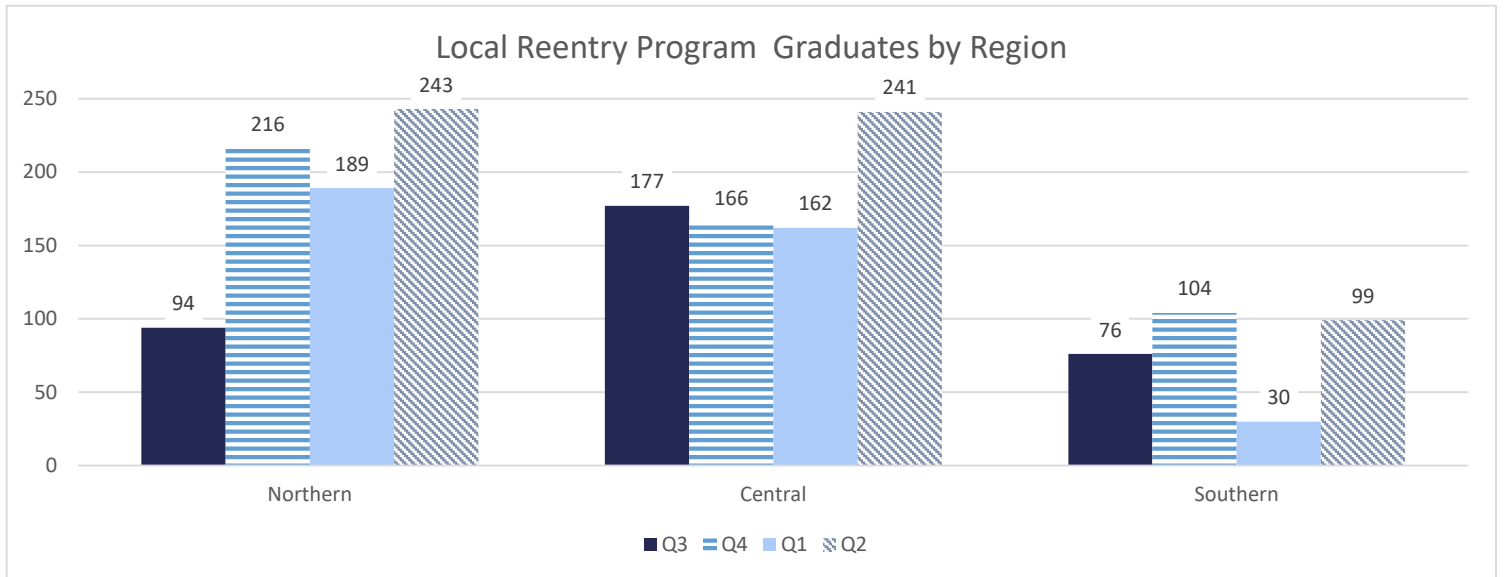


Total Individuals Who Refused Programming by Quarter

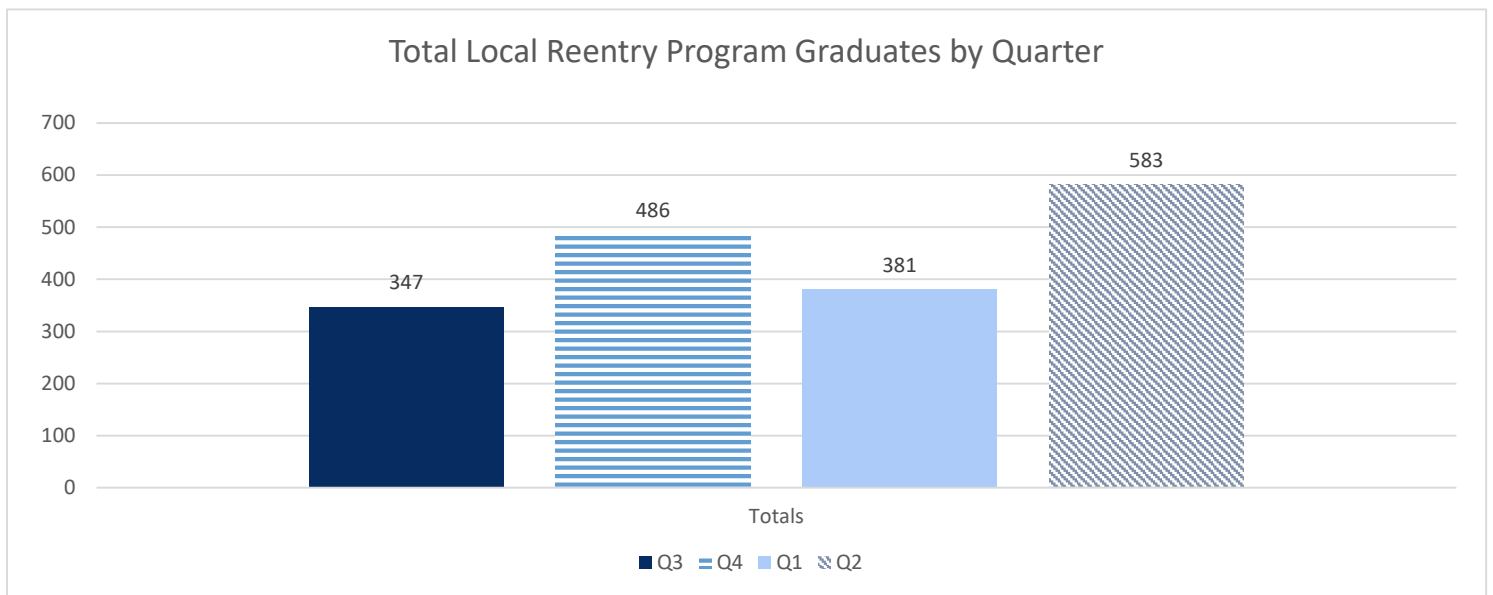


Refused Reentry/Programming-Count the number of offenders who have refused participation in reentry or pre-release programming. This number should not include education refusals. This number should not include offenders who have signed a refusal and are releasing within 6-24 months.





*Quarter 4 decreased because of COVID.



Education Quarterly Summary

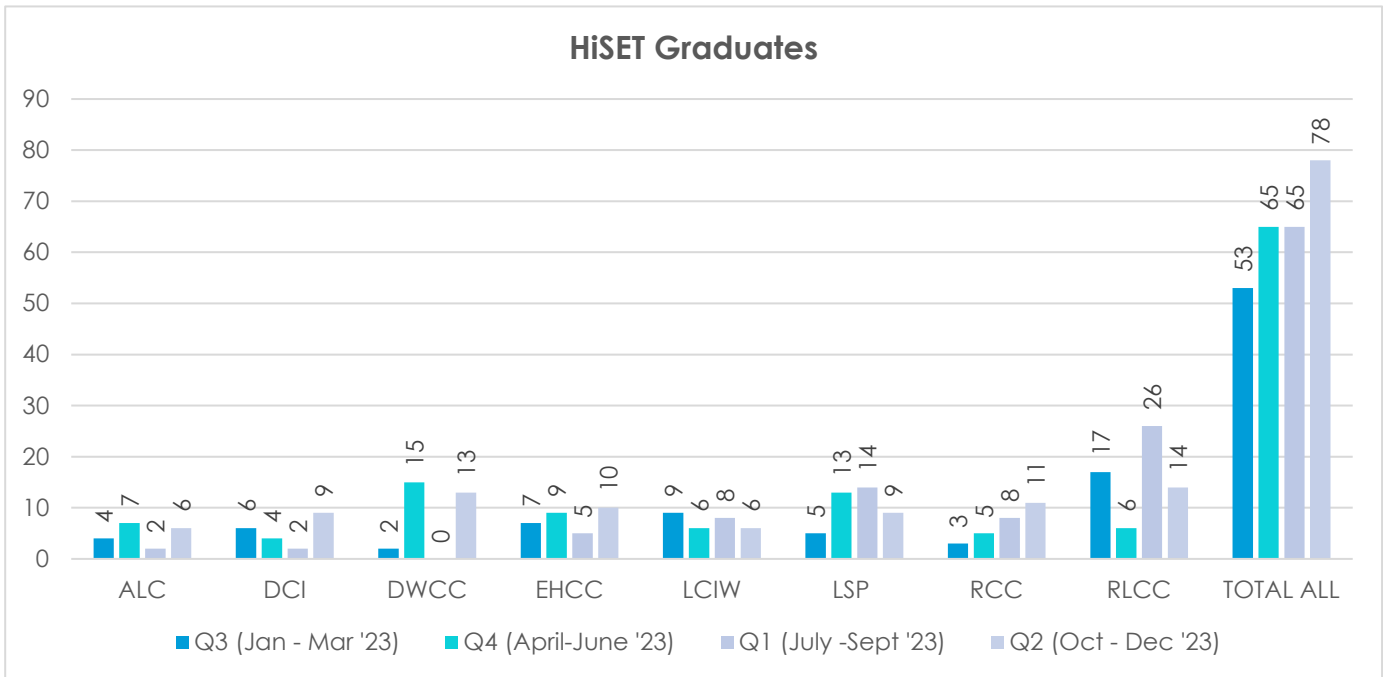
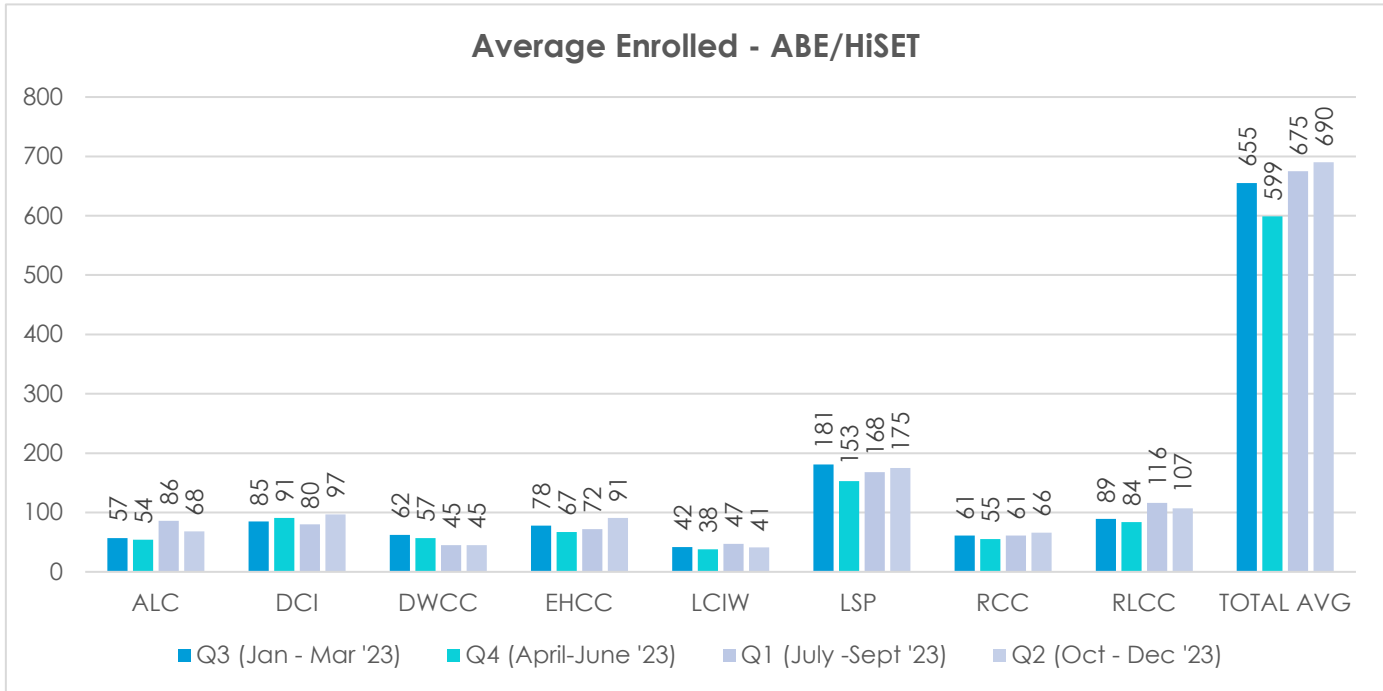
Fiscal Year 2023-2024

Parishes with DPS&C Education Programs

Acadia	Academic	
Allen	Academic	Post-Secondary
Avoyelles (2)	Academic	Post-Secondary
Beauregard	Academic	Post-Secondary
Bossier	Academic	Post-Secondary
Caddo		Post-Secondary
Caldwell	Academic	
Claiborne (2)	Academic	Post-Secondary
East Baton Rouge	Academic	Post-Secondary
East Carroll		Post-Secondary
East Feliciana (2)	Academic	Post-Secondary
Franklin	Academic	Post-Secondary
Iberville (3)	Academic	Post-Secondary
*Jackson		Post-Secondary
Lafayette	Academic	Post-Secondary
Lafourche	Academic	Post-Secondary
Livingston	Academic	Post-Secondary
Madison	Academic	Post-Secondary
Morehouse	Academic	Post-Secondary
Natchitoches	Academic	Post-Secondary
Ouachita	Academic	Post-Secondary
Plaquemines	Academic	Post-Secondary
Rapides	Academic	Post-Secondary
Red River	Academic	
Richland		Post-Secondary
St. Landry	Academic	
St. Martin	Academic	
St. Tammany	Academic	Post-Secondary
Tangipahoa	Academic	Post-Secondary
Terrebonne	Academic	Post-Secondary
Washington	Academic	Post-Secondary
Webster	Academic	Post-Secondary
West Baton Rouge	Academic	Post-Secondary
West Feliciana	Academic	Post-Secondary
*Closed		

State Facility Education Programs

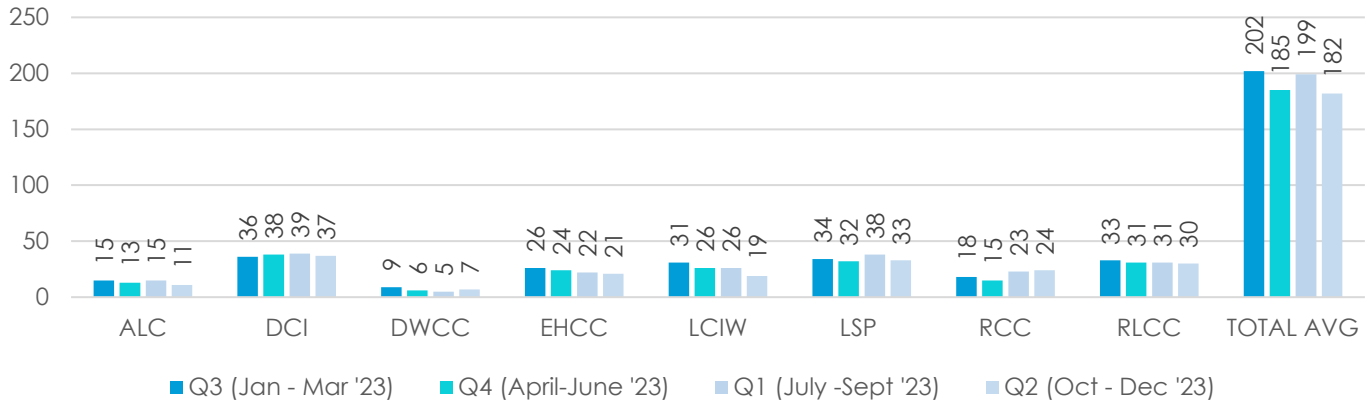
Adult Education/HiSET Programs



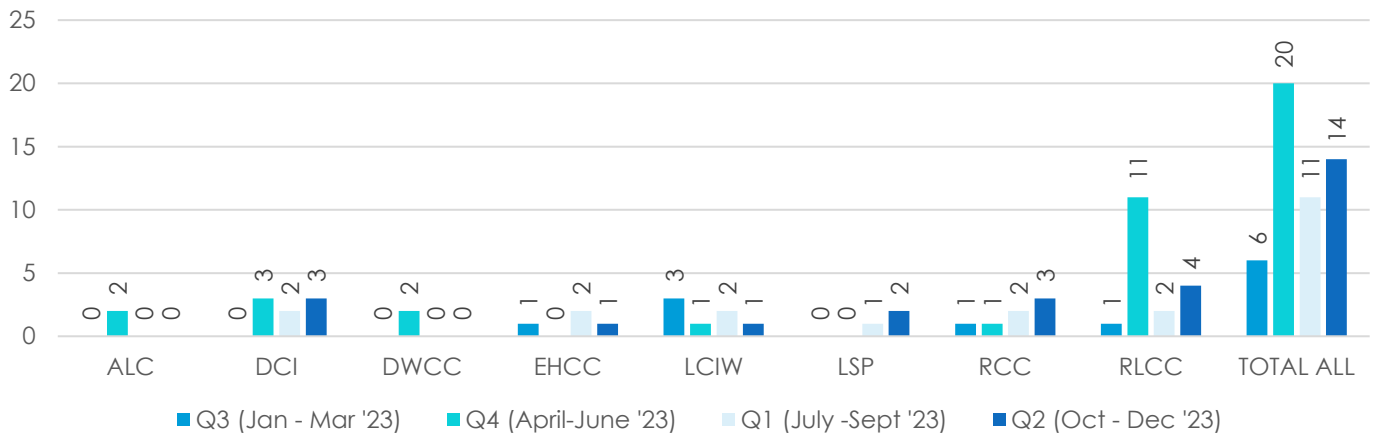
State Facility Education Programs, Cont.

Literacy Programs

Average Enrolled - Literacy



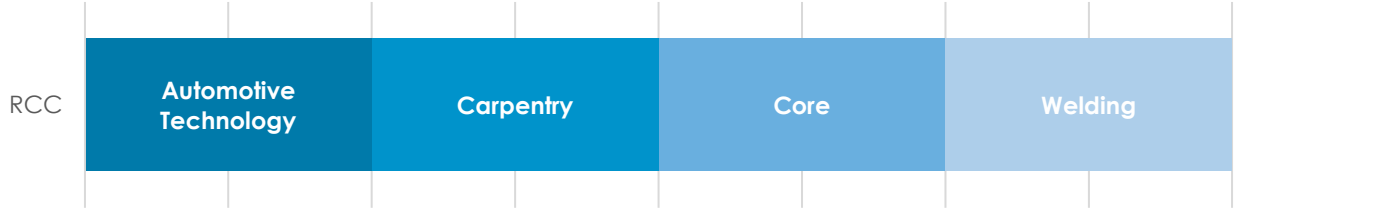
Completions - Literacy



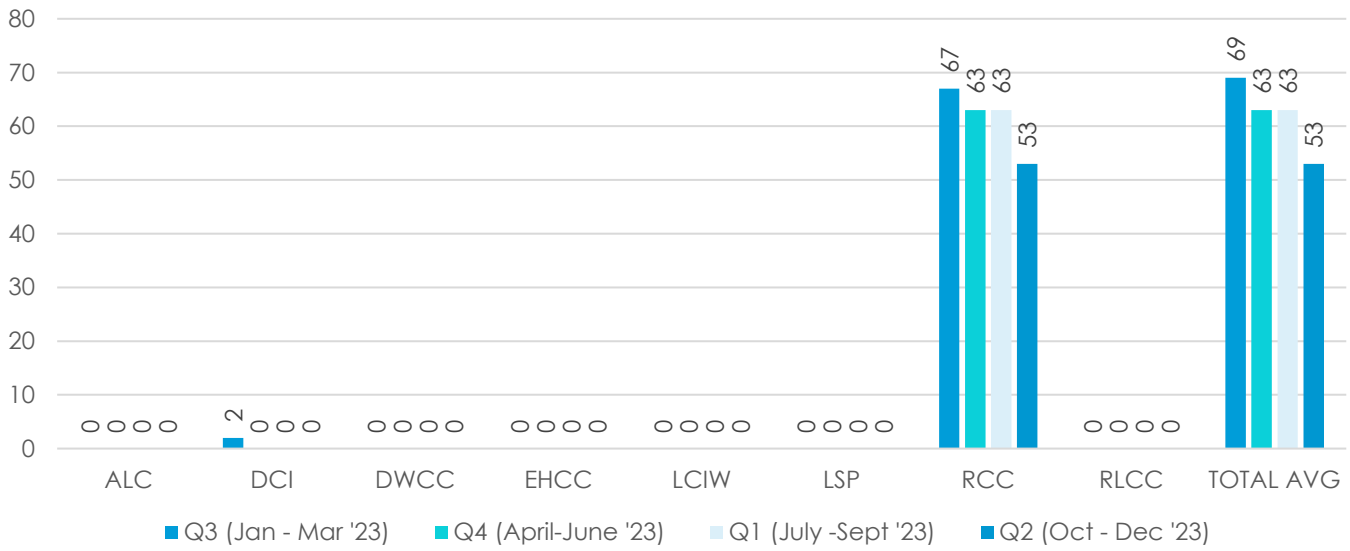
State Facility Education Programs, Cont.

LCTCS Career and Technical Education Programs

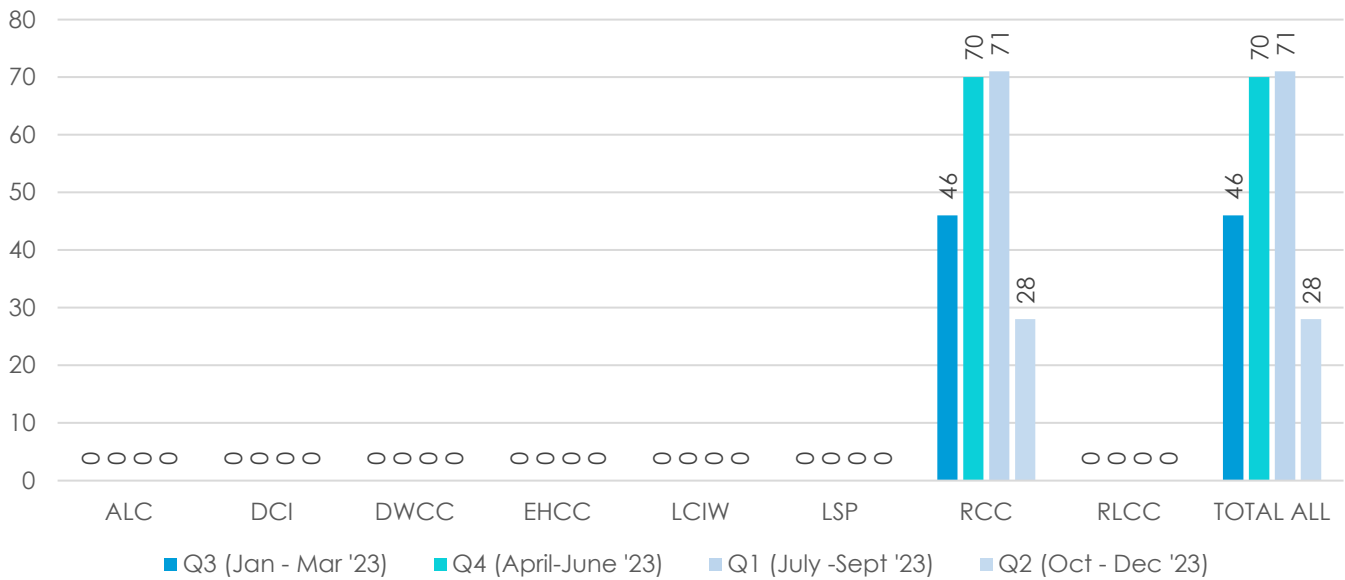
NORTHWEST LA TECHNICAL COMMUNITY COLLEGE



LCTCS Career and Technical Education Average Enrollment



LCTCS Career and Technical Education Completions



State Facility Education Programs, Cont.

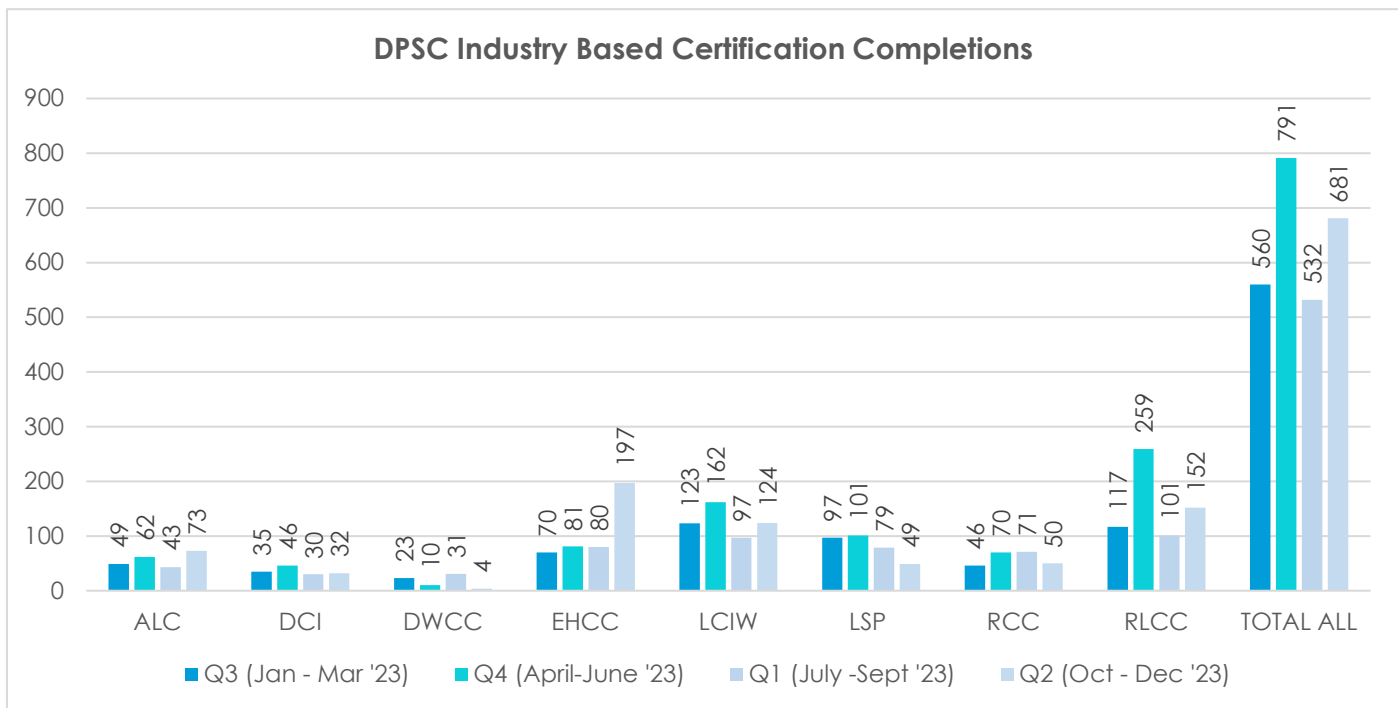
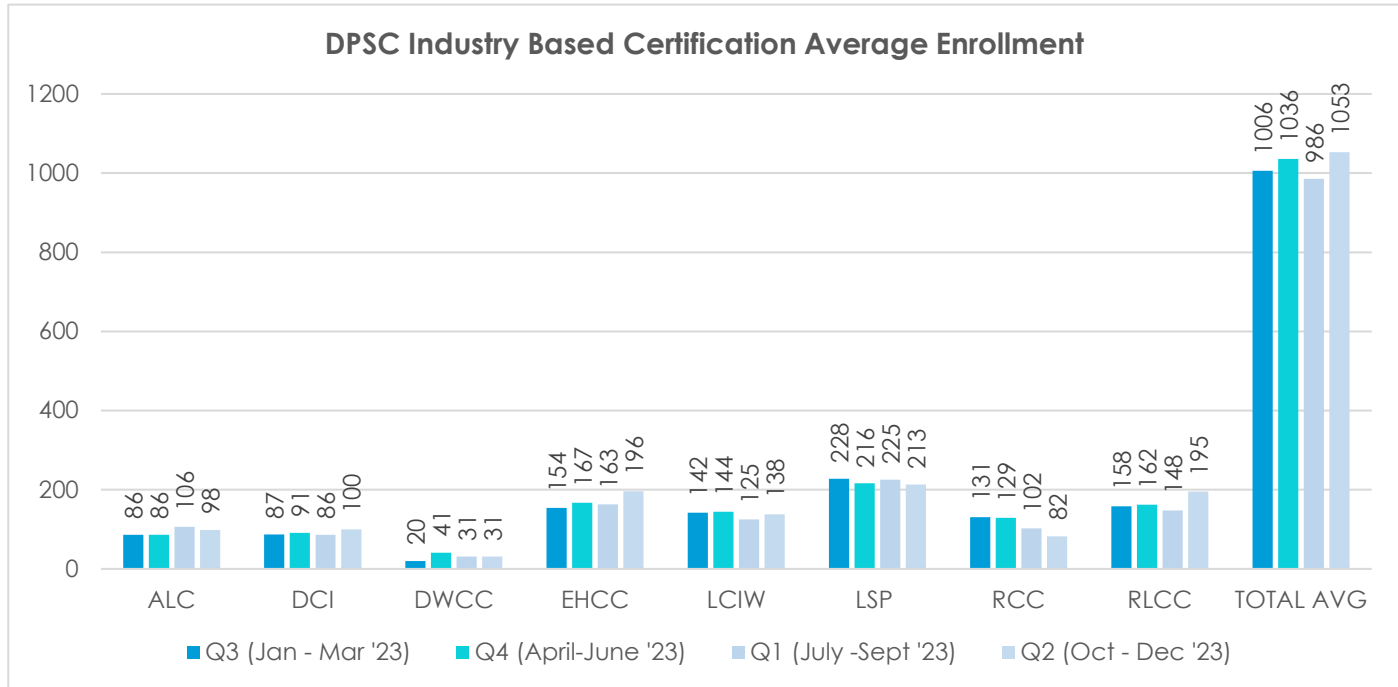
DPS&C Career and Technical Education Programs

Fiscal Year 2023-2024

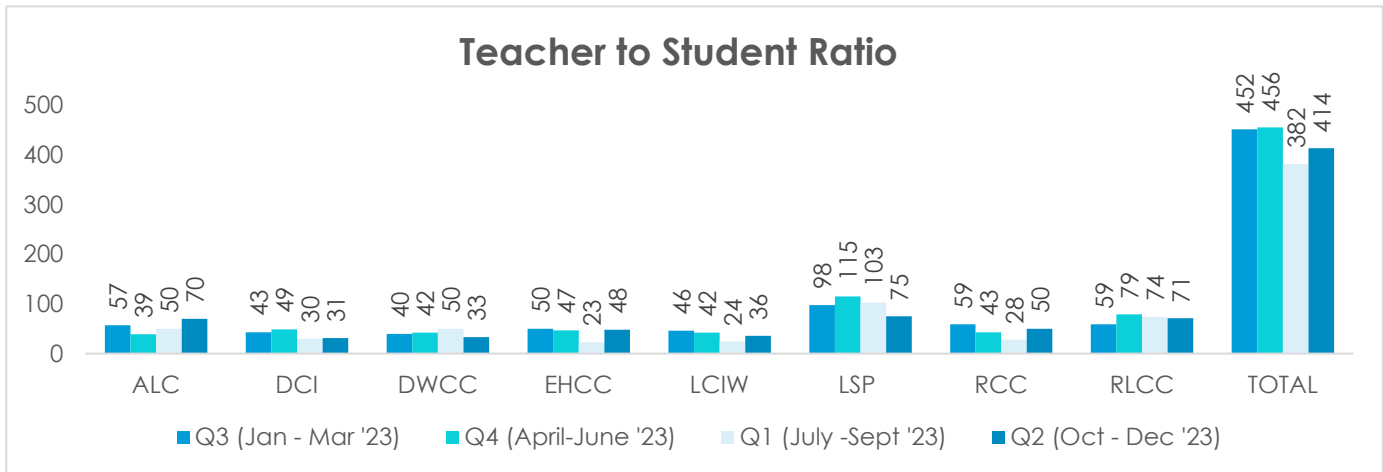
OSHA 30	ALC	DCI	DWCC	EHCC	LCIW	LSP	RCC	RLCC
OSHA 10	ALC	DCI	DWCC	EHCC	LCIW	LSP	RCC	RLCC
Forklift Operation	ALC	RLCC						
Welder-Fitter	ALC							
Welding	DCI	EHCC	LCIW	LSP	RCC	RLCC		
Surveying	EHCC							
Site Layout	EHCC							
Safety Technician	EHCC	LCIW	RLCC					
Project Supervision	EHCC							
Project Management	EHCC							
Plumbing	LSP							
Microsoft Office Specialist	LCIW							
Medical Lab Assistant	LCIW							
Masonry	LSP	RLCC						
Instructor Certification Training	ALC	DCI	DWCC	EHCC	LCIW	LSP	RCC	RLCC
HVAC	EHCC	LSP						
Heavy Equipment	EHCC	LCIW						
Generator Repair	LSP							
General Construction	LSP							
Furniture Restoration	ALC	LCIW						
Furniture Manufacturing	ALC							
Field Safety	EHCC	LCIW	RLCC					
Fall Protection	ALC	DWCC	LCIW	RLCC				
Electrician System Technology	EHCC							
Electrical	EHCC	LSP						
Crew Leadership	ALC	EHCC	LCIW	LSP	RCC			
Core	ALC	DCI	DWCC	EHCC	LCIW	LSP	RCC	RLCC
Construction Technology	RCC							
Concrete Refinishing	LSP							
Carpentry	DCI	DWCC	EHCC	LSP				
Building Technology	LSP	RCC						
Horticulture	LCIW							
ServSafe	ALC	DWCC	EHCC	LCIW	LSP	RCC	RLCC	
Cosmetology-Teacher-Training	LCIW							
Cosmetology	LCIW							
Digital Literacy/IC3	ALC	DCI	DWCC	EHCC	LCIW	LSP	RCC	RLCC
Computer Coding/Python	ALC	DWCC	EHCC	LCIW	LSP	RLCC		
Outdoor Power Equipment	ALC	DCI	EHCC	LSP	RCC	RLCC		
CDL/Truck Driving	LSP							
Collision Repair	DCI	LSP	RLCC					
Cabinet Making/Installation	LCIW							
Automotive Technology	DCI	LSP	RCC	RLCC				

State Facility Education Programs, Cont.

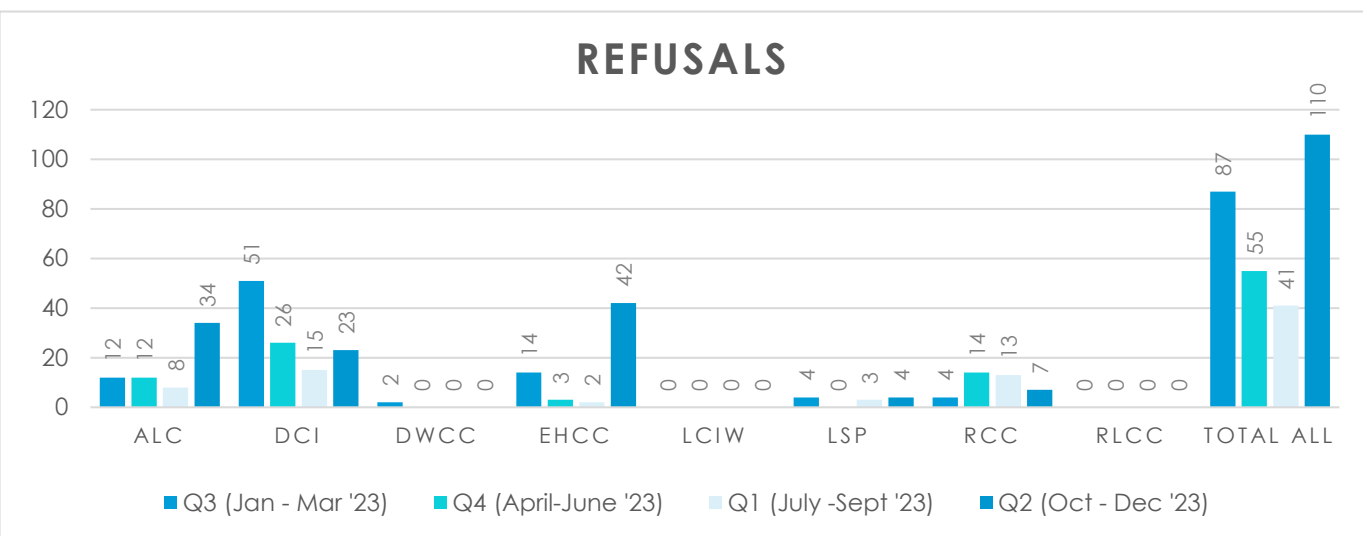
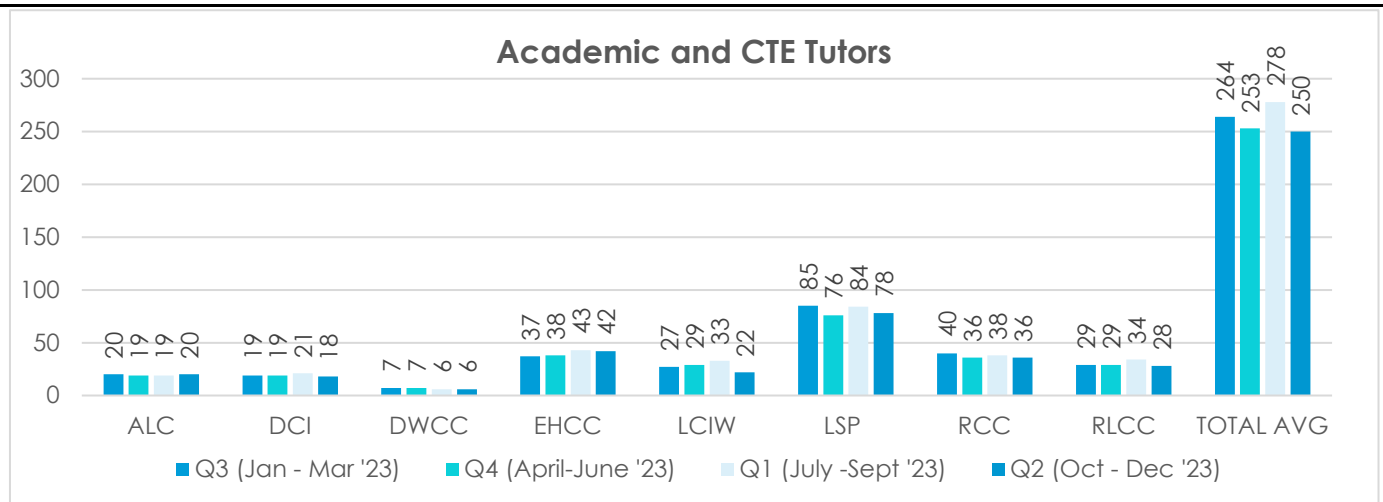
DPS&C Career and Technical Education Programs



State Facility Education Programs, Cont.



Student to teacher ratio includes the total average number of students enrolled in Academic and CTE Programs. This provides a more accurate depiction of how our teachers are being utilized in various capacities.

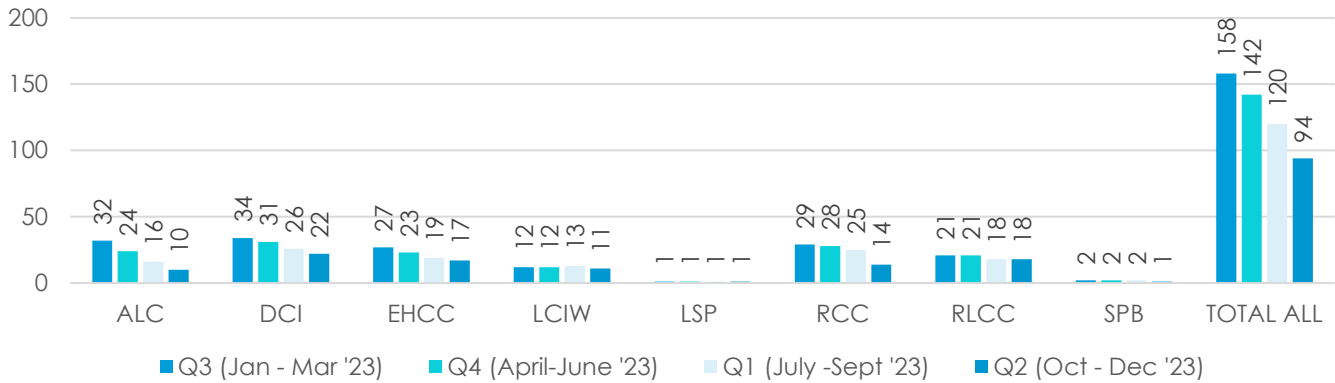


DCI attempted to enroll 100+ students between February and March which increased the number of refusals by a large number.

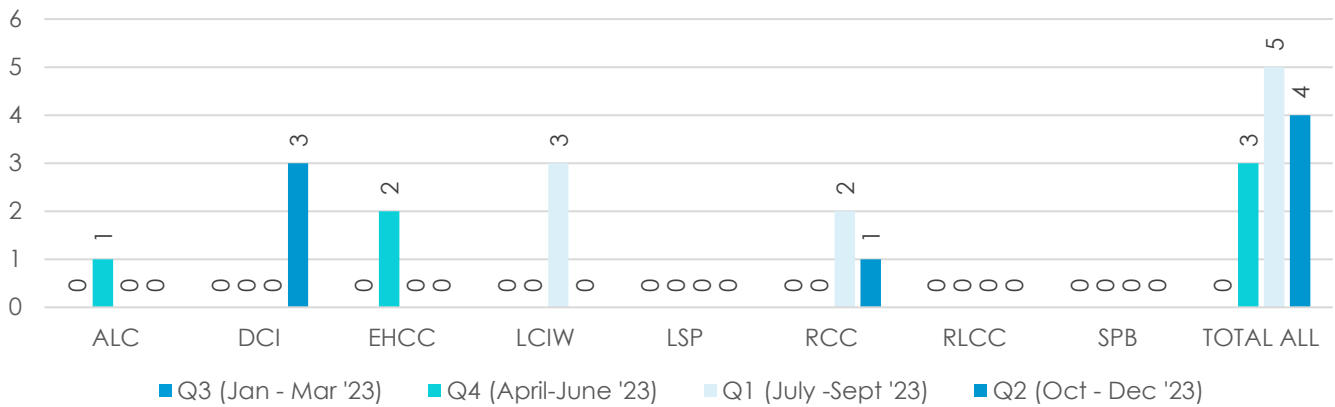
State Facility Education Programs, Cont.

Pell Funded Education Programs

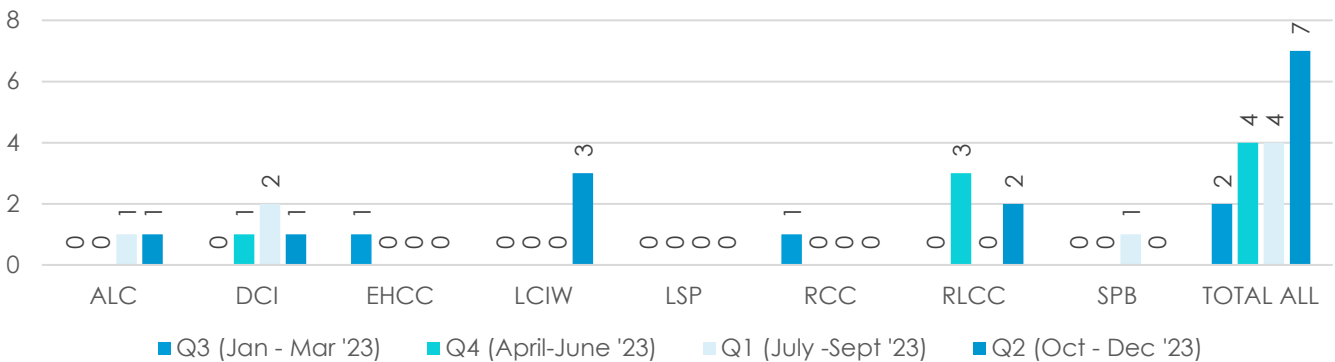
Ashland Enrollment - Pell Experimental Study



Ashland Bachelor Degree Graduates Pell Experimental Study



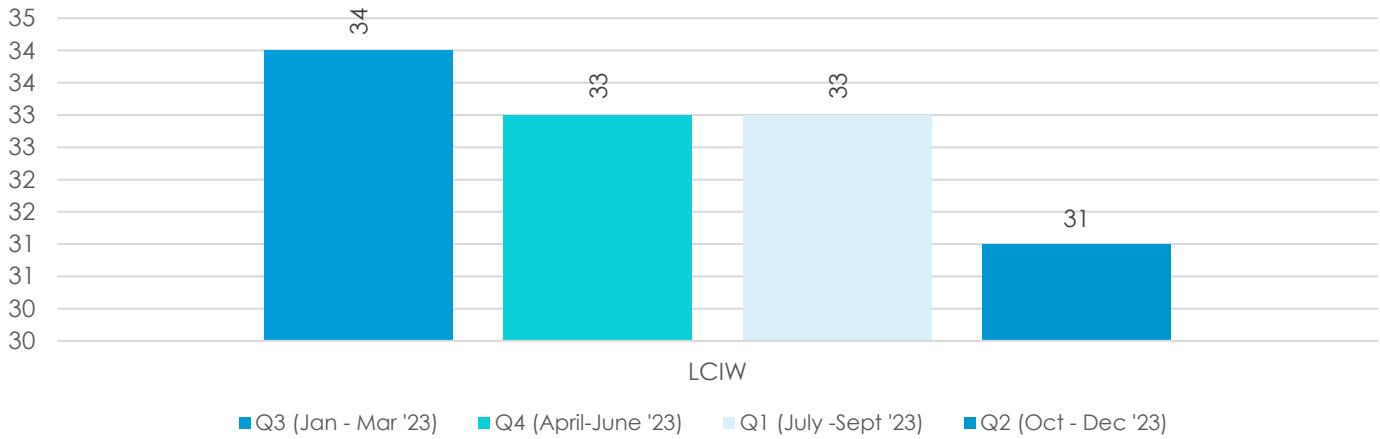
Ashland Associates Degree Graduates Pell Experimental Study



State Facility Education Programs, Cont.

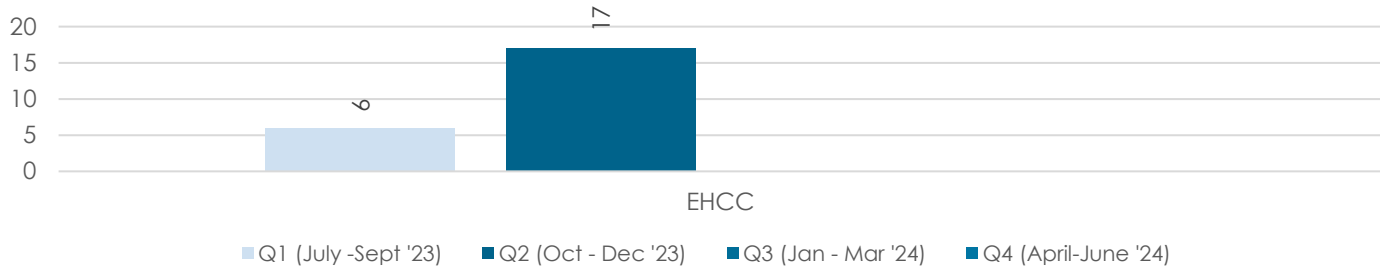
Pell Funded Education Programs, Cont.

Tulane University Enrollment

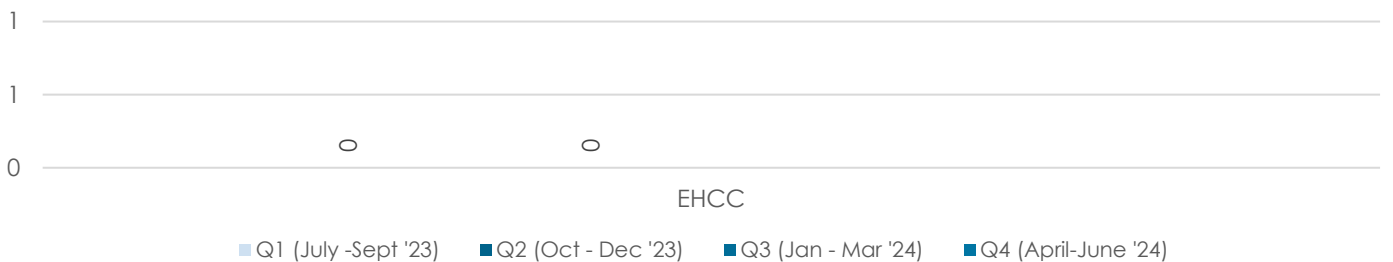


The Tulane University program continues to offer College credit to the women at LCIW through virtual and face to face instruction. There are no completions for the Tulane program because this is a 4 year degree and the students are taking minimal credit hours per semester.

Fletcher Community College Enrollment

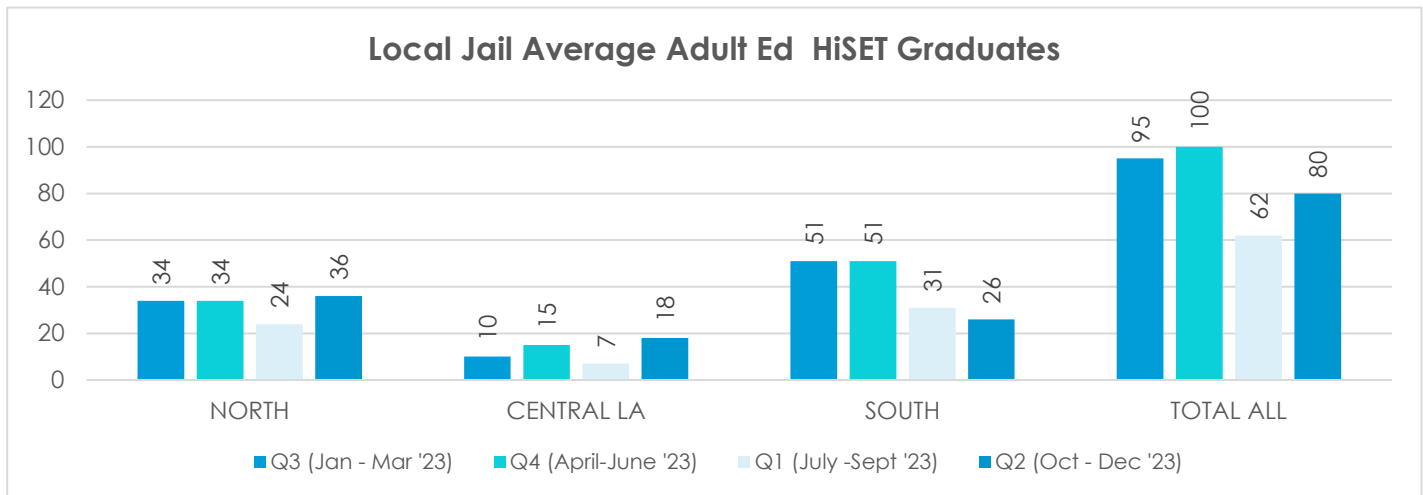
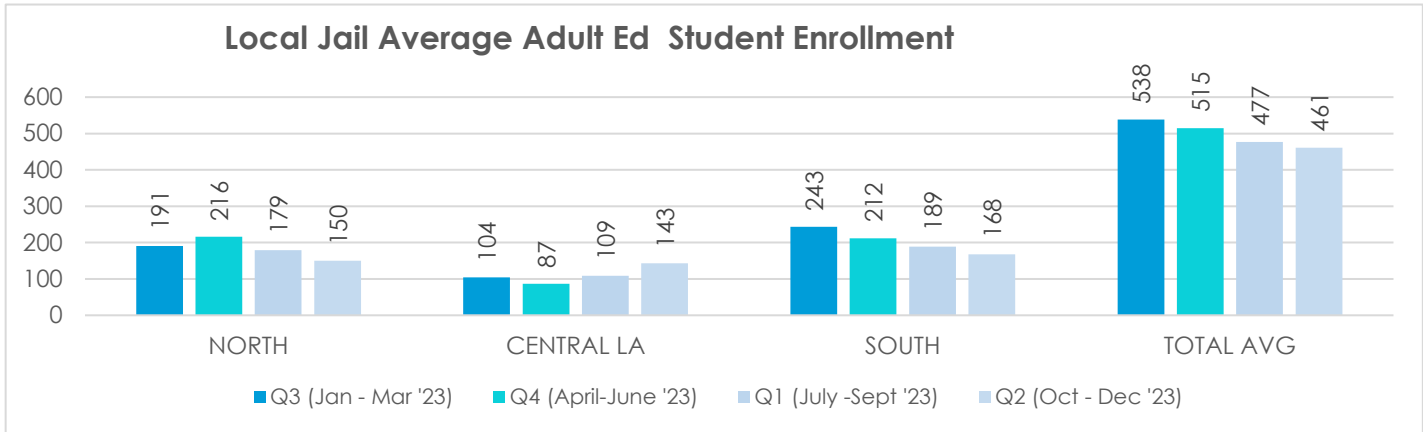


Fletcher Community College Associates Degree Graduates



Fletcher Community College offers College credit to the men at EHCC through virtual and face to face instruction. There are no completions for the Tulane program because this is a 4 year degree and the students are taking minimal credit hours per semester.

Local Facility Education Programs Adult Education/HiSET Programs



Two facilities in Central Louisiana are closed due to Hurricane IDA and COVID. We will continue to keep in contact with these facilities in the event they decide to implement education (Beauregard Parish Jail and Tensas Parish Jail). Nelson Coleman Correctional Center is closed since they no longer house DPS&C inmates.

Local Facility Education Programs, Cont.

LCTCS CTE Programs FY 23-24

Louisiana Delta Community College

RIVERBEND	Welding				
OUACHITA	Core	Welding			
FRANKLIN	Core	CPR/First Aid	Forklift Operation	Heavy Equipment	OSHA 10

Bossier Parish Community College

CADDO	Carpentry	Core	Fiber Optics		
-------	-----------	------	--------------	--	--

Central Louisiana Technical Community College

RAPIDES	Core	Forklift Operation	OSHA 10		
---------	------	--------------------	---------	--	--

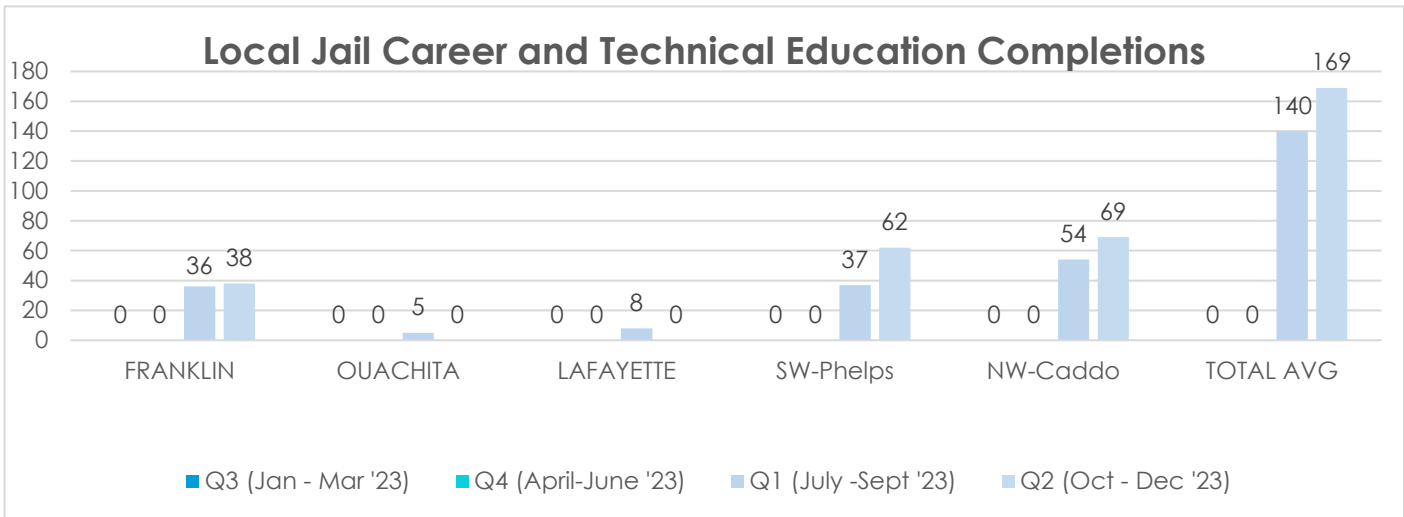
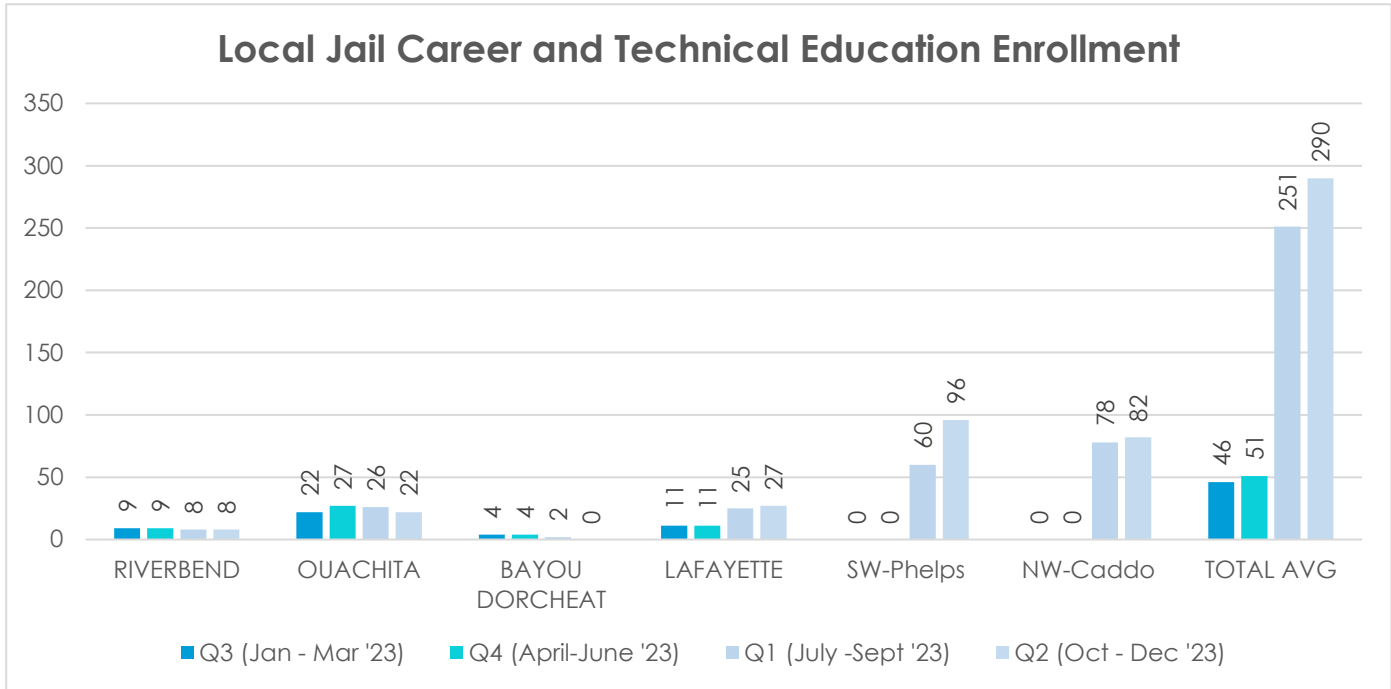
Northwest Louisiana Technical College

BAYOU DORCHEAT	Welding				
----------------	---------	--	--	--	--

South Louisiana Community College

LAFAYETTE	Core	Welding			
-----------	------	---------	--	--	--

LCTCS CTE Programs FY 23-24, Cont.



Jackson has completed the new facility. DOC CTE Staff are working with Jackson to resume the Welding program through the LA Delta Jonesboro Campus, and incorporate additional IBCs.

Local Facility Education Programs, Cont.

Industry Based Certification Programs

North Programs: Fiscal Year 2023-2024

CPR/First Aid	RPM						
Southwest Professional...							
OSHA 10	LTCW	RPM					
Forklift Operation	LTCW	MPDC	OCC	RPM			
Welding							
Core	LTCW	RPM					
Carpentry							
ServSafe	LTCW	MPDC	NE-FPDC	OCC			
Cosmetology-Teacher-Training	LTCW						
Cosmetology	LTCW						
Digital Literacy/IC3	BDCC	CPDC	LTCW	MPDC	NE-FPDC	OCC	

Central Programs: Fiscal Year 2023-2024

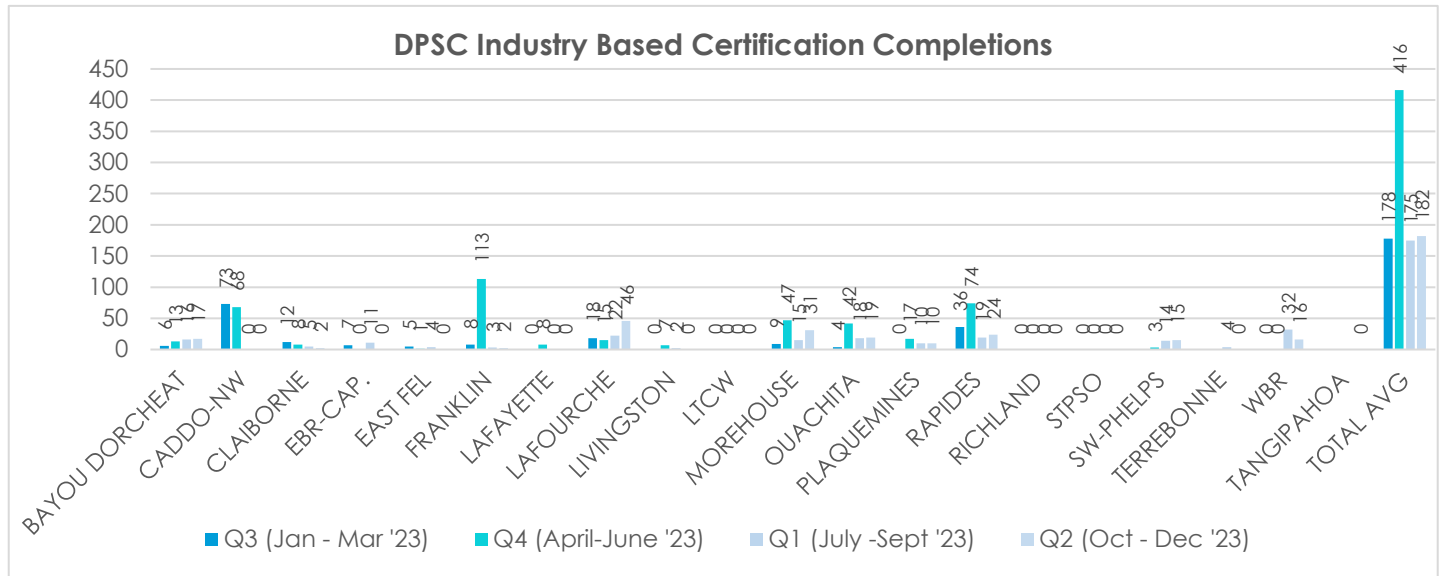
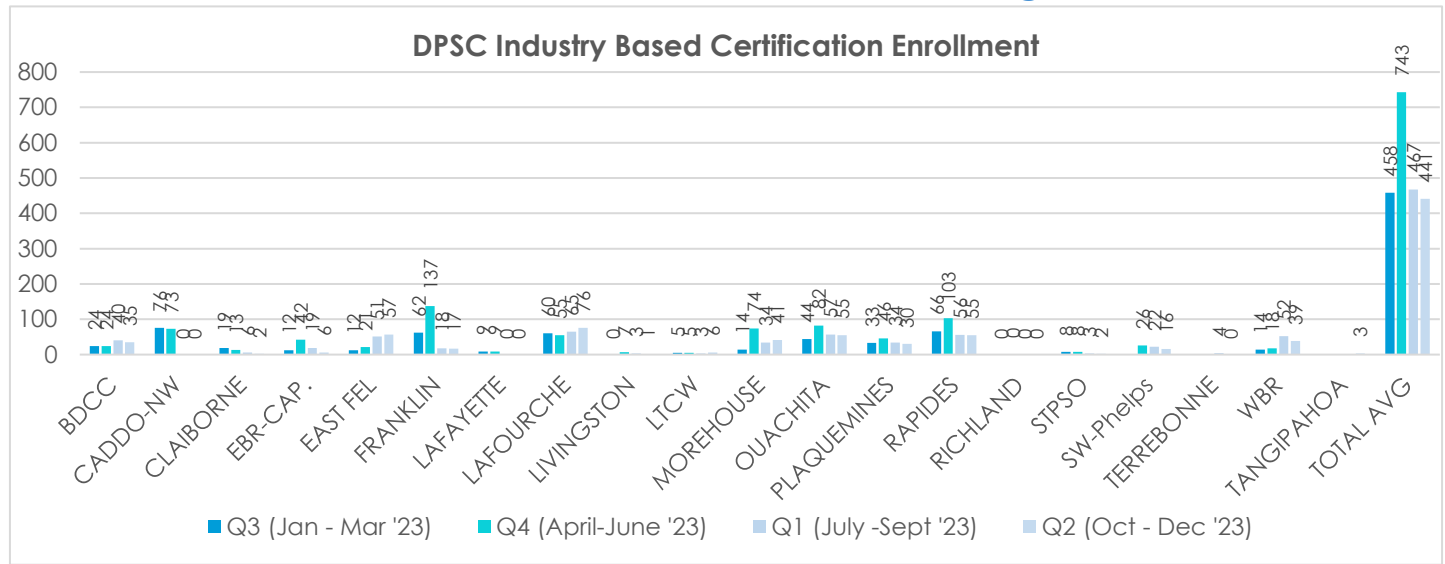
Southwest Professional...							
OSHA 10							
Forklift Operation							
Welding	CENTRAL-RPDC						
Pipeline Technician	LWS-PCC						
Instructor Certification Training	CENTRAL-RPDC						
Core	CENTRAL-RPDC			LWS-PCC			
ServSafe	LPCC-SWC			LWS-PCC			
Digital Literacy/IC3	CENTRAL-RPDC			LPCC-SWC		LWS-PCC	

South Programs: Fiscal Year 2023-2024

Southwest Professional...	LFPSO-SEC								
Cabling Technology	PPSO-SE								
HBI Pact Pre-Apprenticeship	PPSO-SE								
Core	PPSO-SE								
Carpentry	PPSO-SE								
ServSafe	EBR	FL-STPSO	LPDC	LFPSO-SEC	PPSO-SE				
Digital Literacy/IC3	EBR	WBR	EFPSO	FL-STPSO	LPDC	LFPSO-SEC	PPSO-SE	TPSO	TERRE
Deckhand Training	TPSO								
Outdoor Power Equipment	EFPSO								
Collision Repair	LFPSO-SEC								
Automotive Technology	EBR	LFPSO-SEC	TPSO						

Local Facility Education Programs, Cont.

Industry Based Certification Programs



Local Facility Education Programs, Cont.

Pell Funded Education Program - Ashland

