

# Department of Medical and Mental Health

July 2023 - June 2024

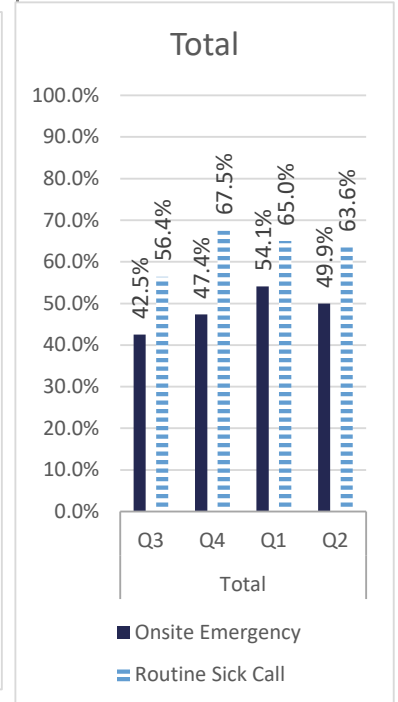
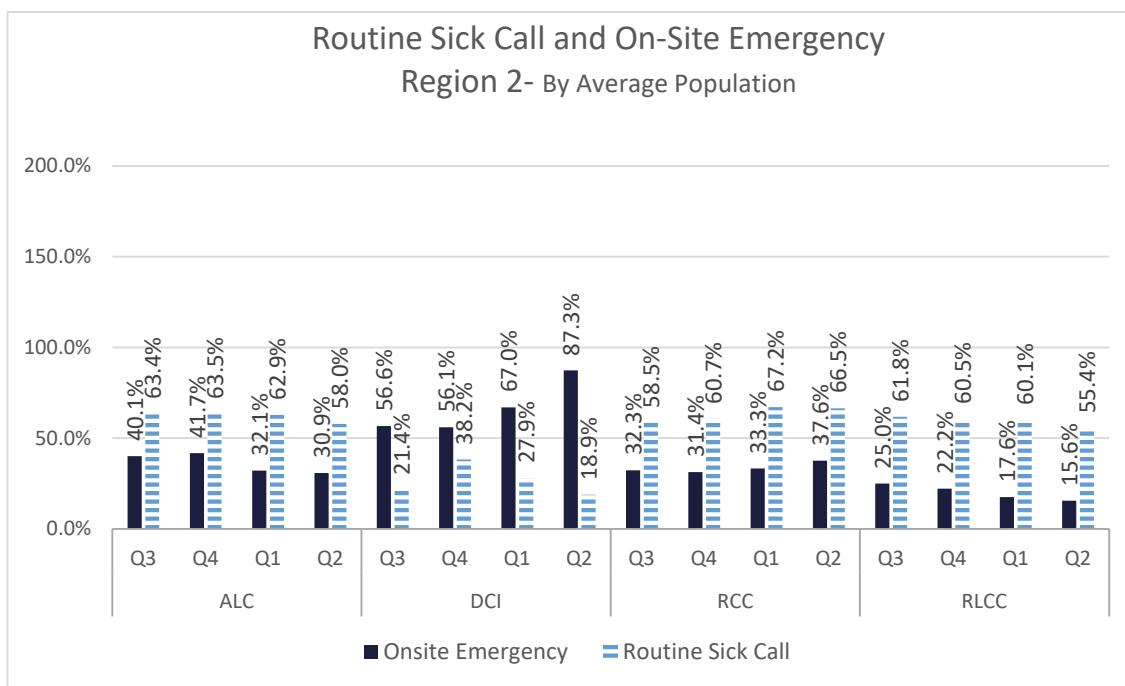
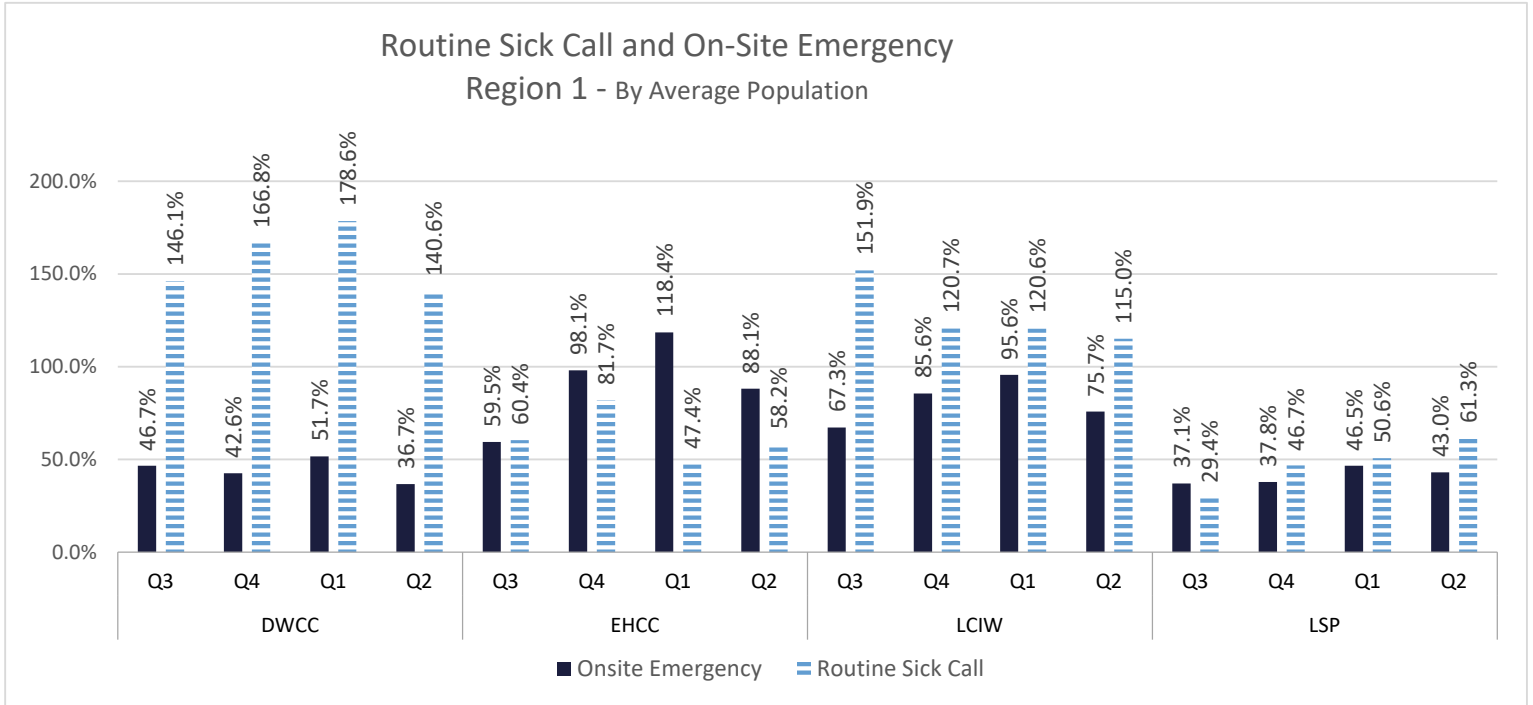
Q3 (Jan.-March 2023)

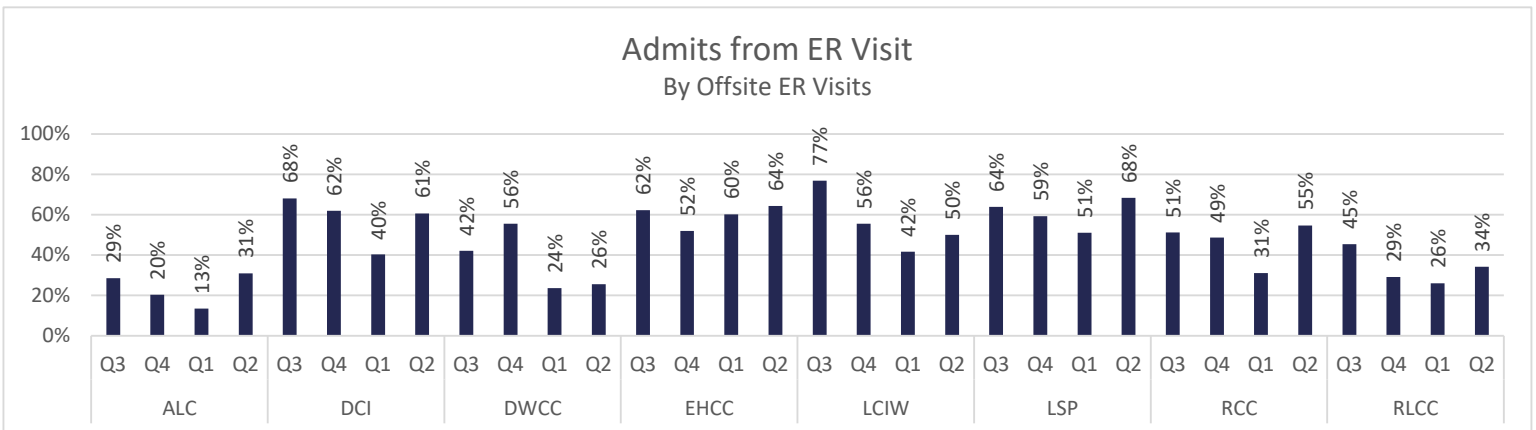
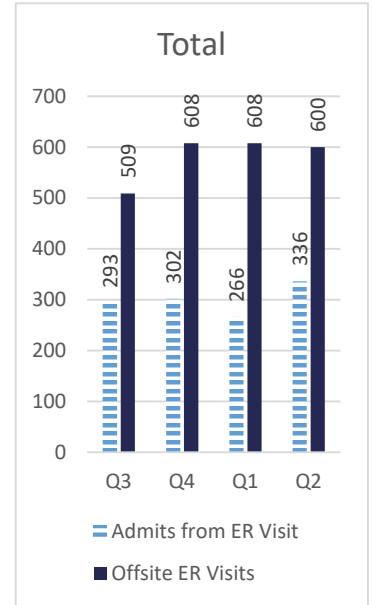
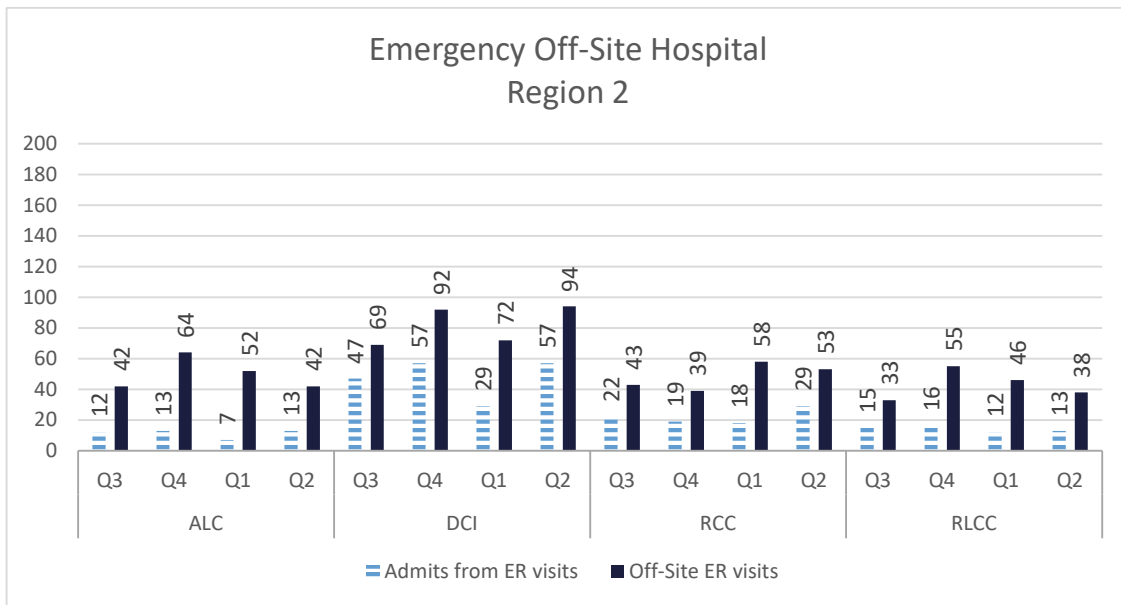
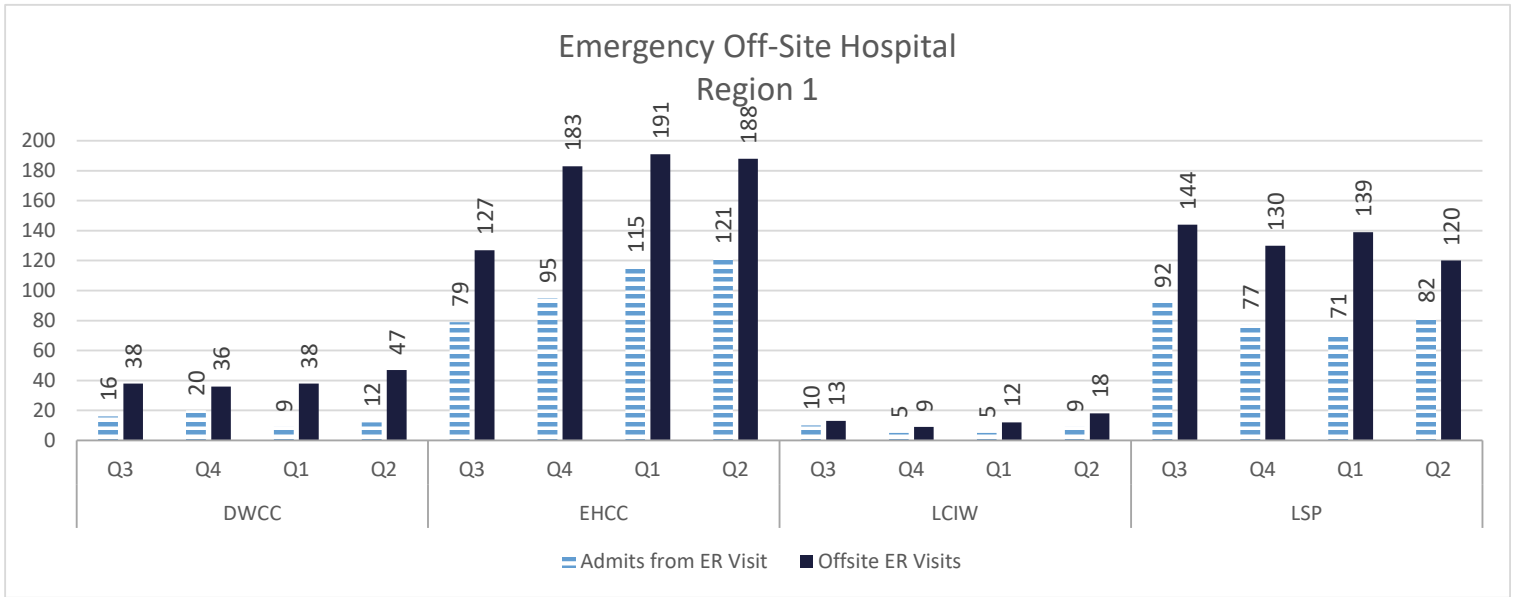
Q4 (April- June 2023)

Q1 (July - Sept 2023)

Q2 (Oct - Dec 2023)

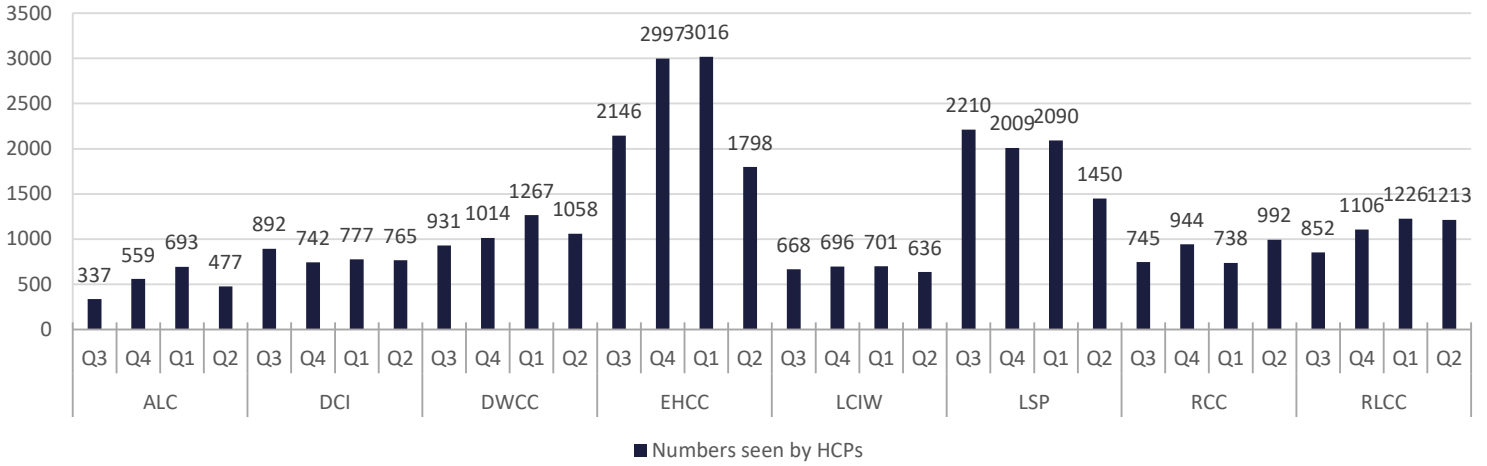
## Healthcare Basic Report I



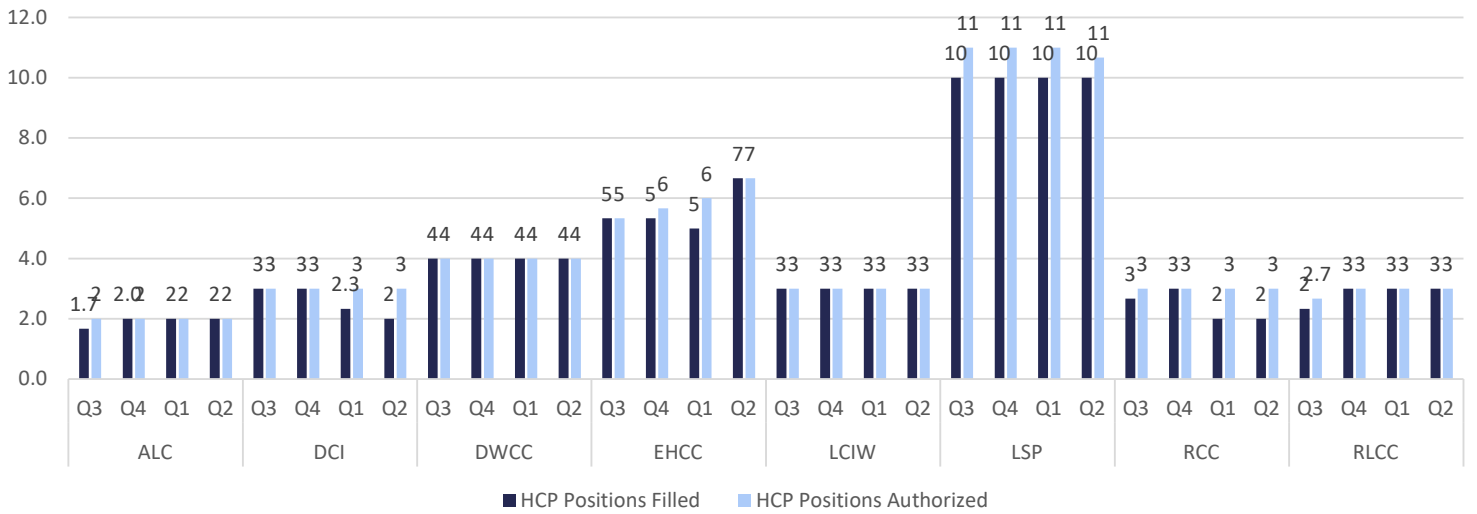


# Healthcare Basic Report I

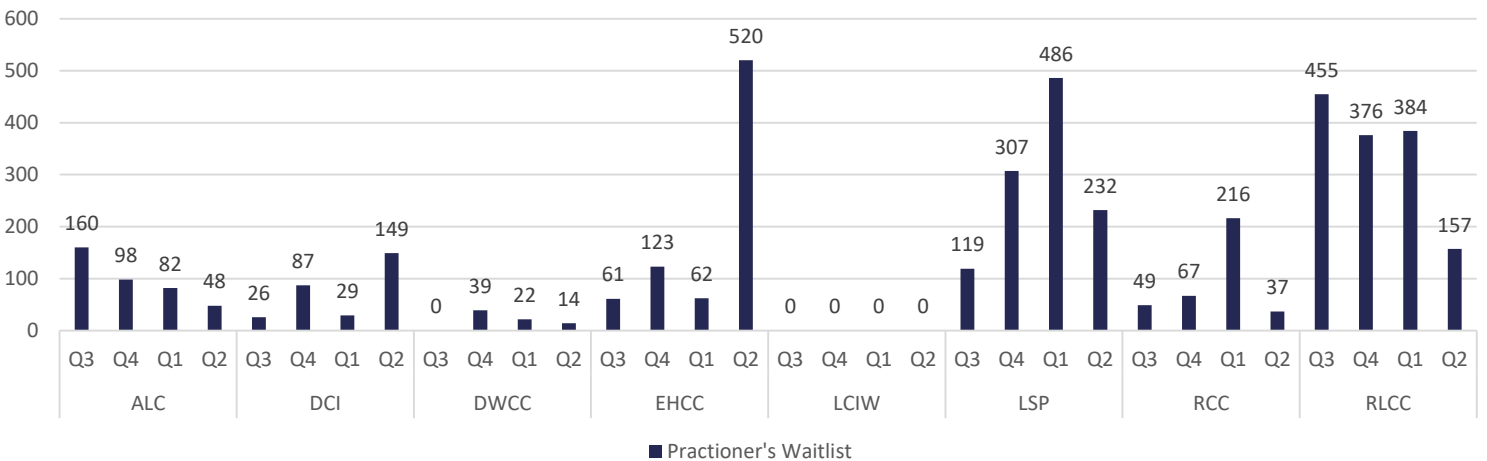
## Numbers Seen by Health Care Practitioners



## Health Care Practitioners

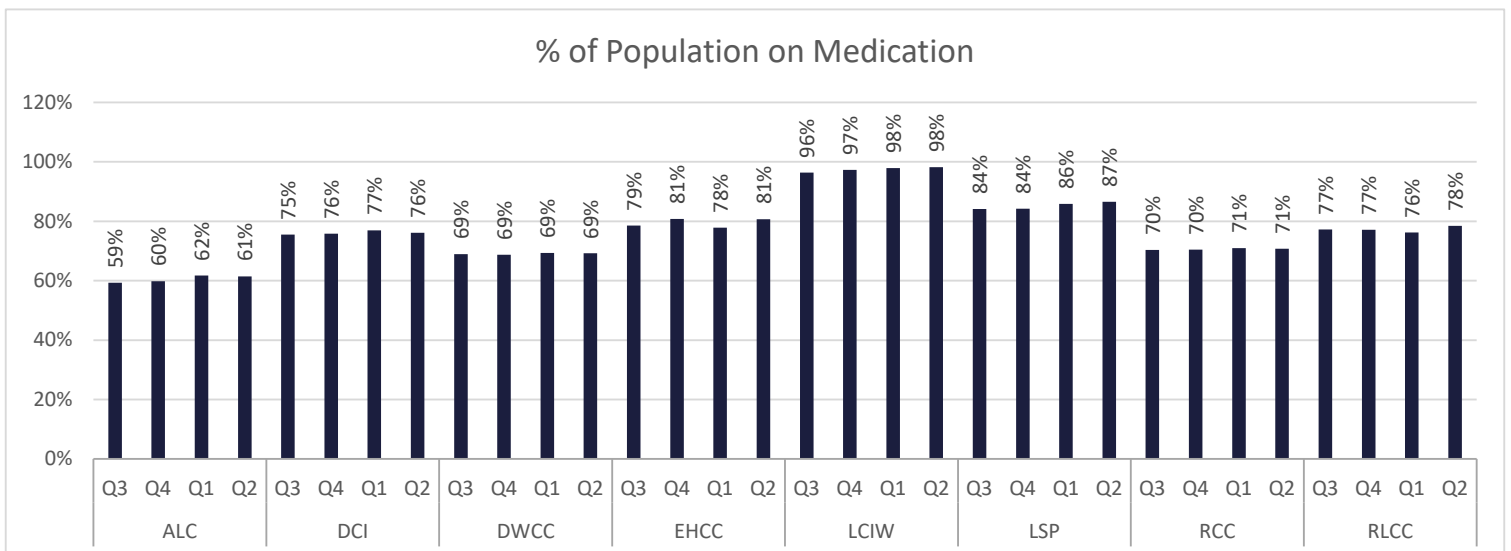
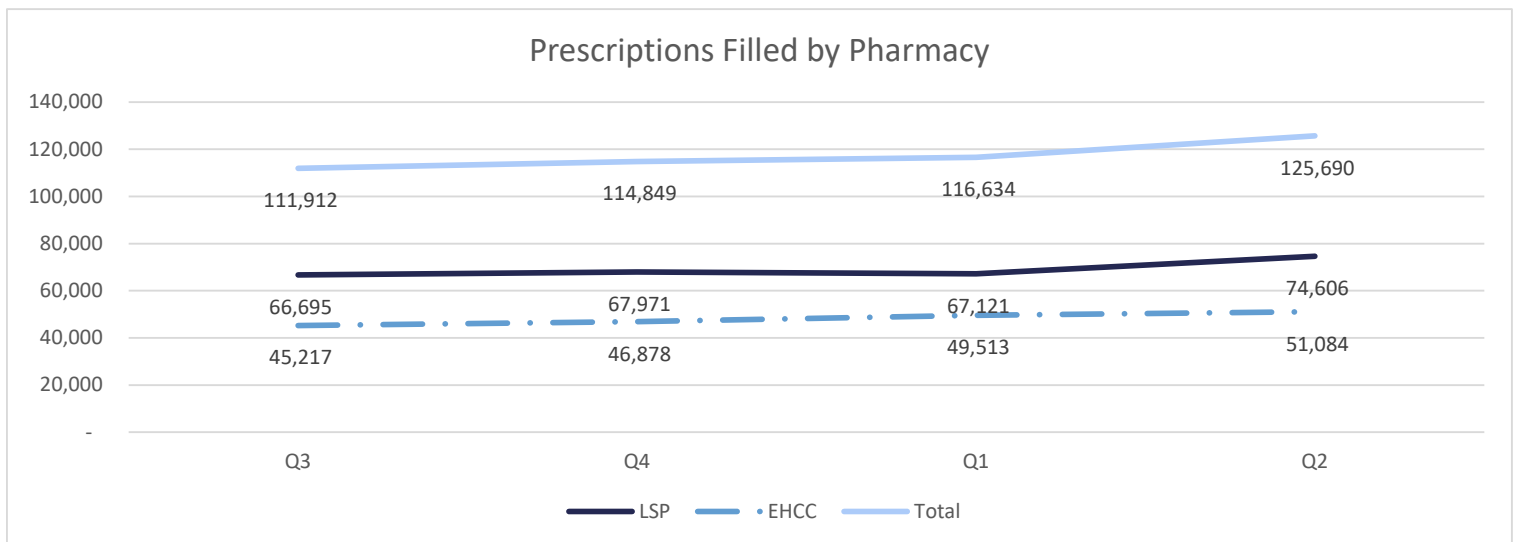
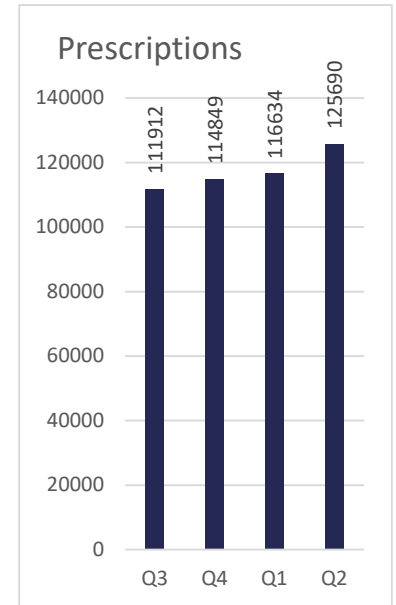
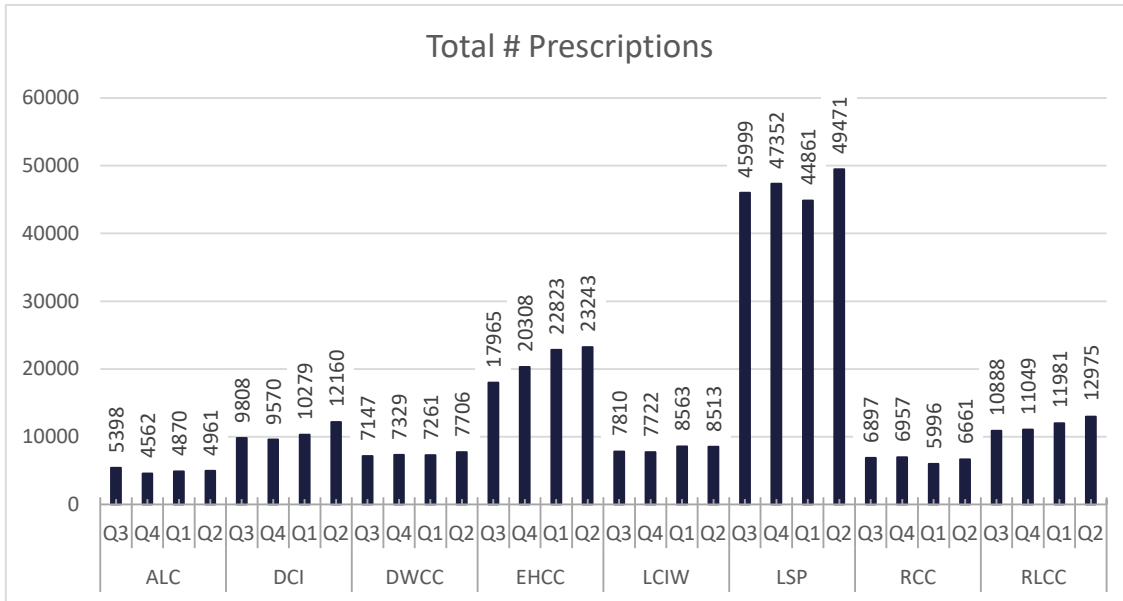


## Health Care Practitioner's Waitlist



\*DCI had a physical change in HCP Position filled coverage back in August 2022

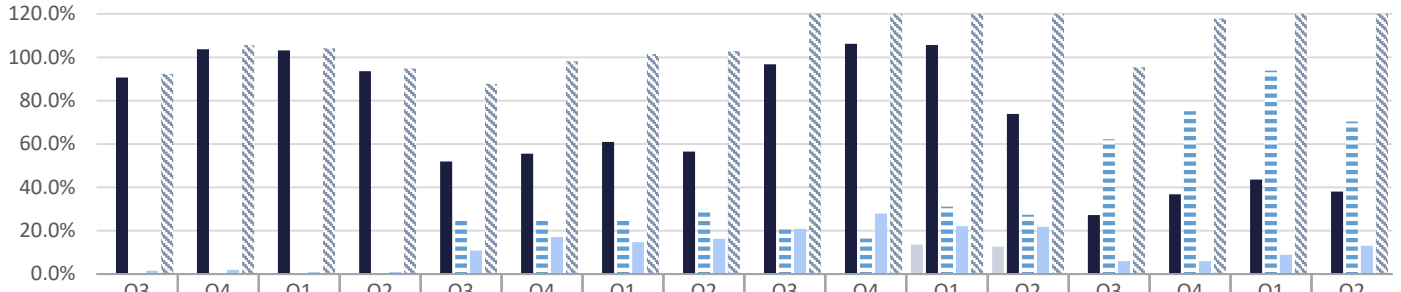
# Healthcare Basic Report II



# Specialty Clinic Diagnostic Tests & Procedures

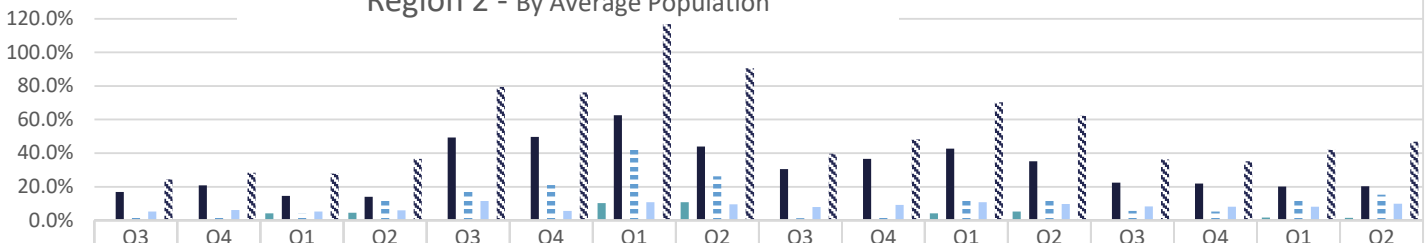
\* Began tracking off-site DOC numbers in July 2020

## Specialty Clinic Diagnostic Tests & Procedures Region 1 - By Average Population



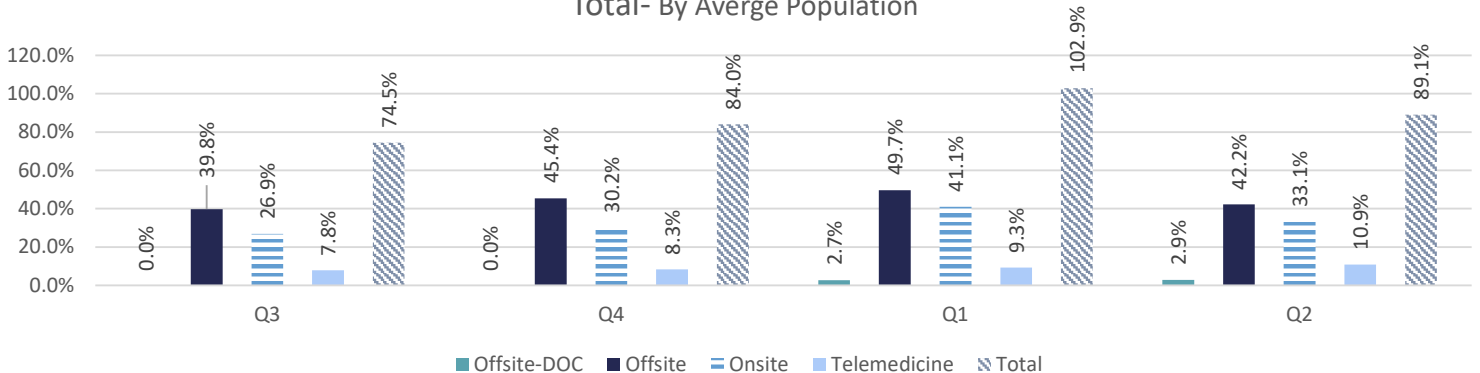
	DWCC				EHCC				LCIW				LSP			
Offsite-DOC	0.0%	0.0%	0.0%	0.0%	0.0%	0.0%	0.0%	0.0%	0.0%	0.0%	13.7%	12.6%	0.0%	0.0%	0.0%	0.0%
Offsite	90.6%	103.7%	103.1%	93.6%	52.0%	55.5%	60.9%	56.5%	96.8%	106.2%	105.6%	73.9%	27.2%	36.8%	43.6%	38.1%
Onsite	0.1%	0.0%	0.1%	0.2%	24.9%	25.5%	25.9%	30.1%	22.3%	16.4%	31.1%	27.3%	62.2%	75.1%	93.8%	70.3%
Telemedicine	1.5%	1.9%	0.9%	1.0%	10.8%	17.1%	14.7%	16.2%	20.9%	28.0%	22.0%	21.8%	6.0%	6.0%	8.9%	13.1%
Total	92.3%	105.6%	104.1%	94.8%	87.7%	98.1%	101.5%	102.9%	139.9%	150.6%	172.4%	135.7%	95.4%	117.9%	146.3%	121.5%

## Specialty Clinic Diagnostic Tests & Procedures Region 2 - By Average Population



	ALC				DCI				RCC				RLCC			
Offsite-DOC	0.0%	0.0%	4.2%	4.4%	0.0%	0.0%	10.3%	10.9%	0.0%	0.0%	4.1%	5.2%	0.0%	0.0%	1.6%	1.5%
Offsite	17.0%	20.8%	14.5%	13.9%	49.4%	49.6%	62.6%	44.0%	30.5%	36.6%	42.6%	35.2%	22.4%	21.9%	20.1%	20.2%
Onsite	2.2%	1.6%	3.9%	12.2%	18.5%	21.0%	43.5%	26.2%	1.2%	2.5%	12.9%	12.1%	5.5%	5.3%	12.2%	15.2%
Telemedicine	5.2%	6.0%	5.1%	6.0%	11.5%	5.6%	10.9%	9.5%	7.9%	9.3%	10.7%	9.7%	8.2%	8.1%	8.1%	9.9%
Total	24.3%	28.4%	27.7%	36.6%	79.4%	76.2%	127.3%	90.6%	39.6%	48.3%	70.3%	62.2%	36.2%	35.2%	42.0%	46.8%

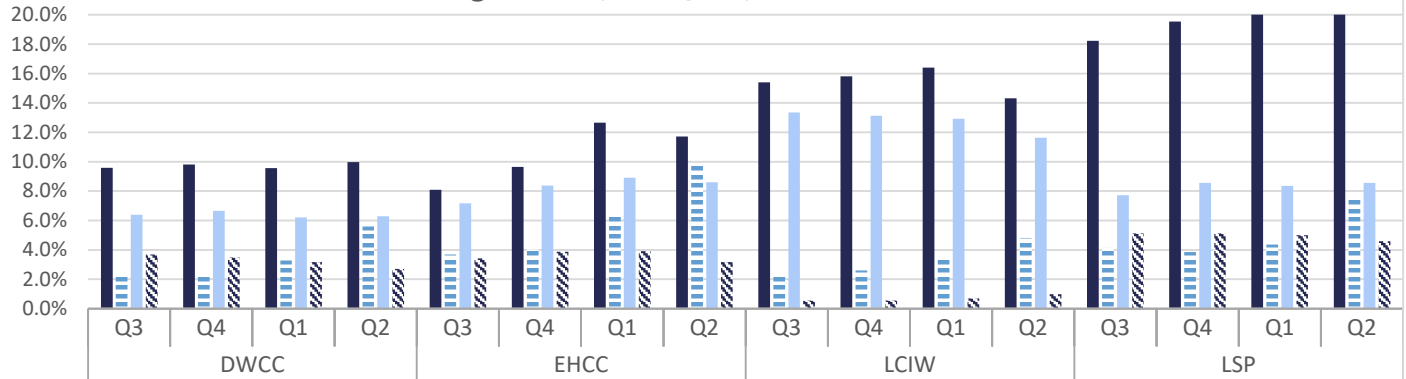
## Specialty Clinic Diagnostic Tests & Procedures Total - By Average Population



Offsite-DOC Offsite Onsite Telemedicine Total

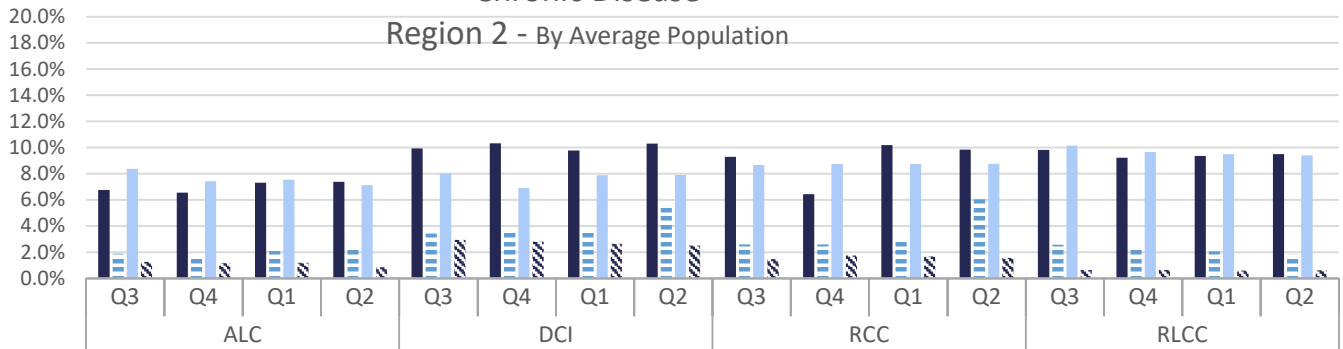
# Chronic Disease

## Chronic Disease Region 1 - By Average Population



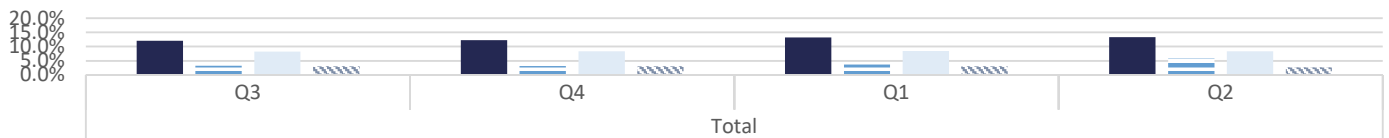
<b>Diabetes</b>	9.6%	9.8%	9.6%	10.0%	8.1%	9.6%	12.7%	11.7%	15.4%	15.8%	16.4%	14.3%	18.2%	19.5%	20.2%	21.1%
<b>Heart Disease</b>	2.3%	2.3%	3.3%	5.6%	3.7%	4.0%	6.4%	9.7%	2.4%	2.6%	3.5%	4.8%	4.1%	3.9%	4.4%	7.5%
<b>COPD</b>	6.4%	6.7%	6.2%	6.3%	7.2%	8.4%	8.9%	8.6%	13.4%	13.1%	12.9%	11.6%	7.7%	8.6%	8.4%	8.6%
<b>Cancer</b>	3.7%	3.5%	3.2%	2.7%	3.4%	3.9%	3.9%	3.2%	0.5%	0.6%	0.7%	1.0%	5.1%	5.1%	5.0%	4.6%

## Chronic Disease Region 2 - By Average Population



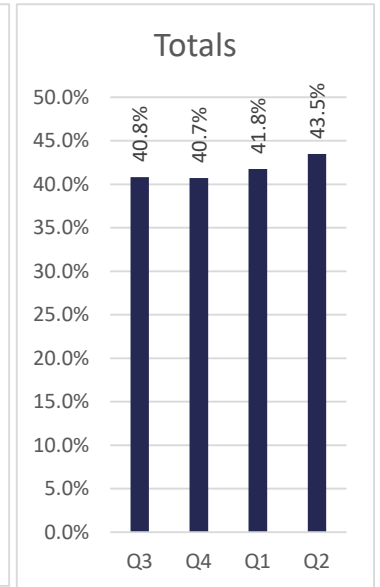
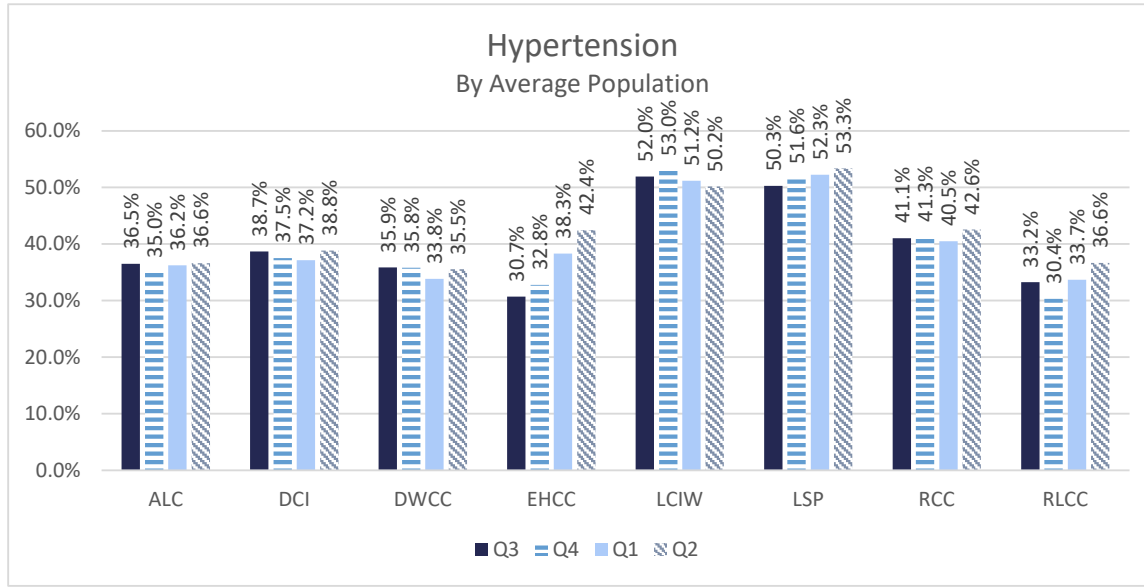
<b>Diabetes</b>	6.8%	6.6%	7.3%	7.4%	9.9%	10.3%	9.8%	10.3%	9.3%	6.4%	10.2%	9.9%	9.8%	9.2%	9.4%	9.5%
<b>Heart Disease</b>	1.9%	1.7%	2.1%	2.3%	3.4%	3.5%	3.5%	5.5%	2.6%	2.6%	2.8%	6.0%	2.6%	2.4%	2.1%	1.8%
<b>COPD</b>	8.4%	7.4%	7.6%	7.1%	8.0%	6.9%	7.9%	7.9%	8.7%	8.7%	8.7%	8.8%	10.1%	9.7%	9.5%	9.4%
<b>Cancer</b>	1.3%	1.2%	1.2%	0.9%	3.0%	2.8%	2.7%	2.5%	1.5%	1.7%	1.7%	1.6%	0.7%	0.6%	0.6%	0.6%

## Chronic Disease Total- By Average Population

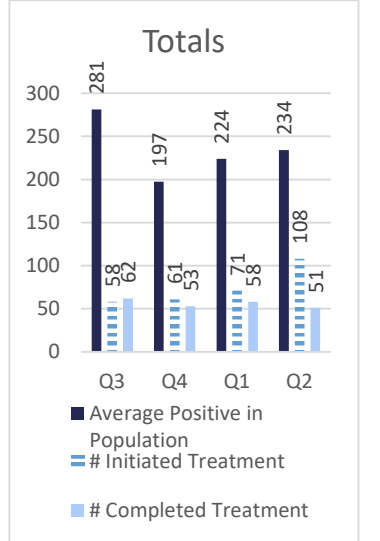
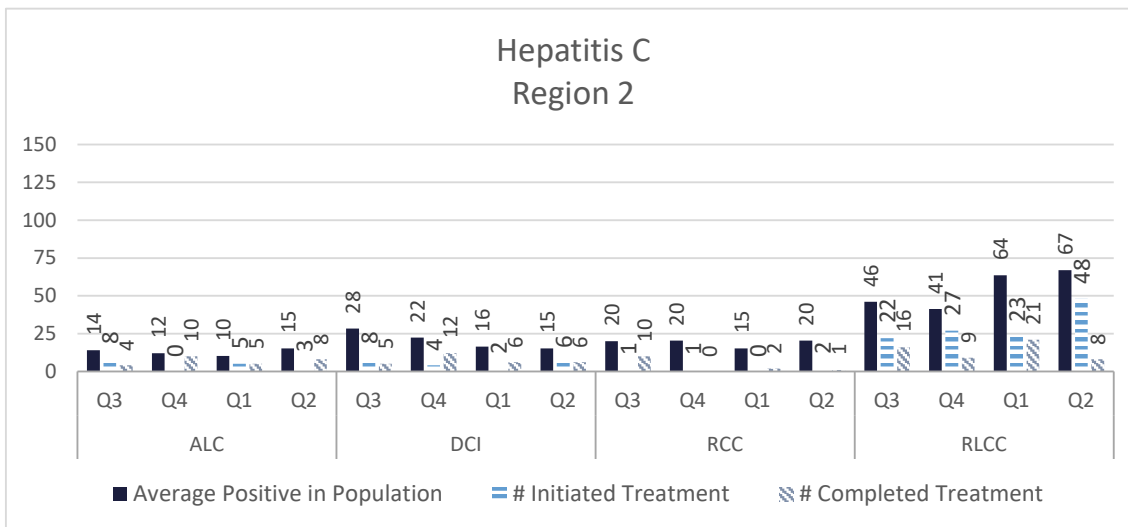
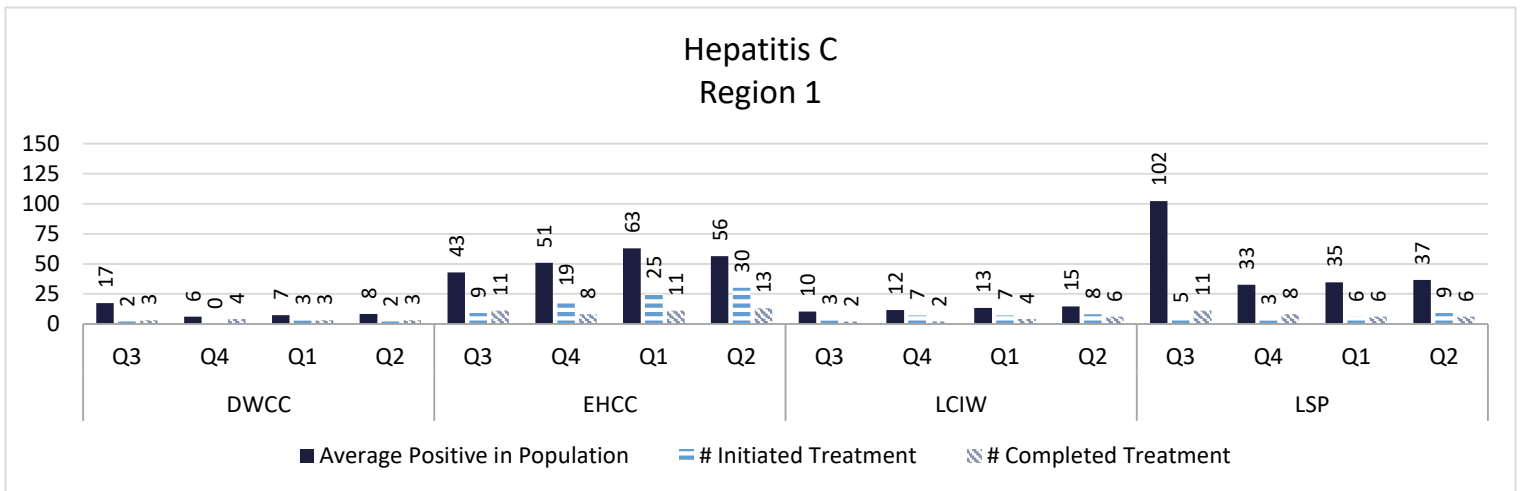


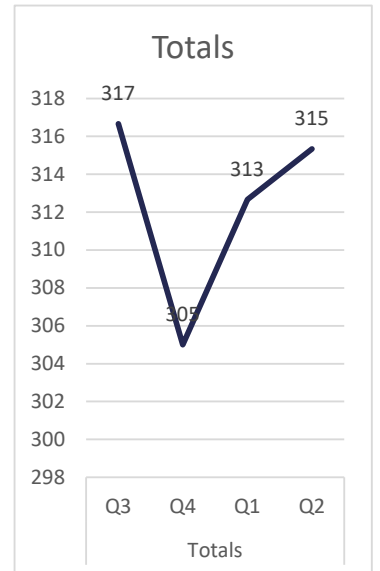
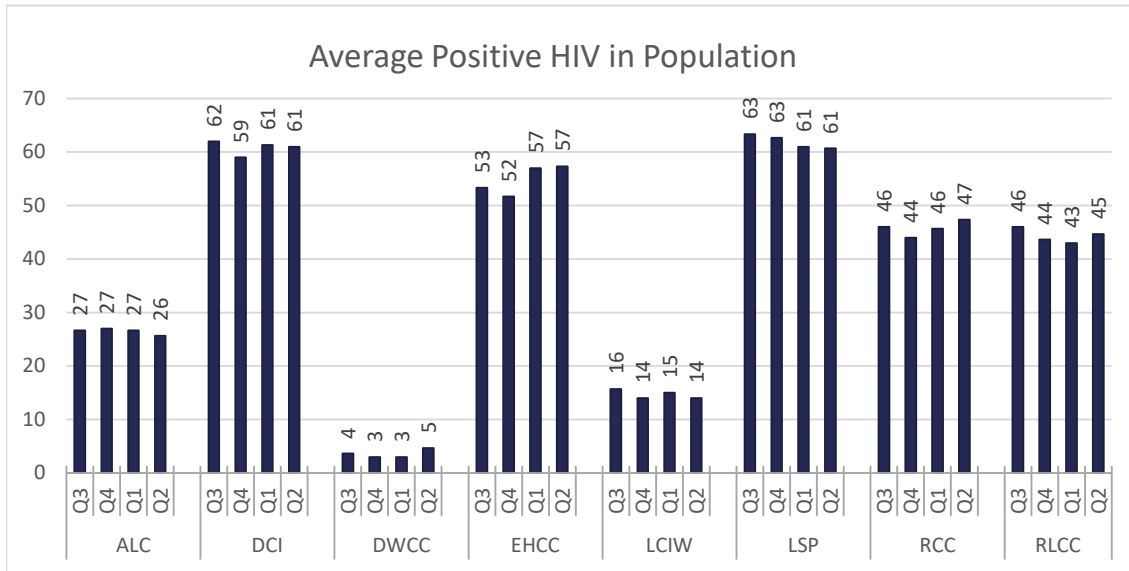
	Q3	Q4	Q1	Q2
<b>Diabetes</b>	12.1%	12.3%	13.2%	13.3%
<b>Heart Disease</b>	3.2%	3.1%	3.7%	5.9%
<b>COPD</b>	8.2%	8.4%	8.4%	8.4%
<b>Cancer</b>	3.1%	3.1%	3.0%	2.7%

■ Diabetes ■ Heart Disease ■ COPD ■ Cancer



## Communicable Disease

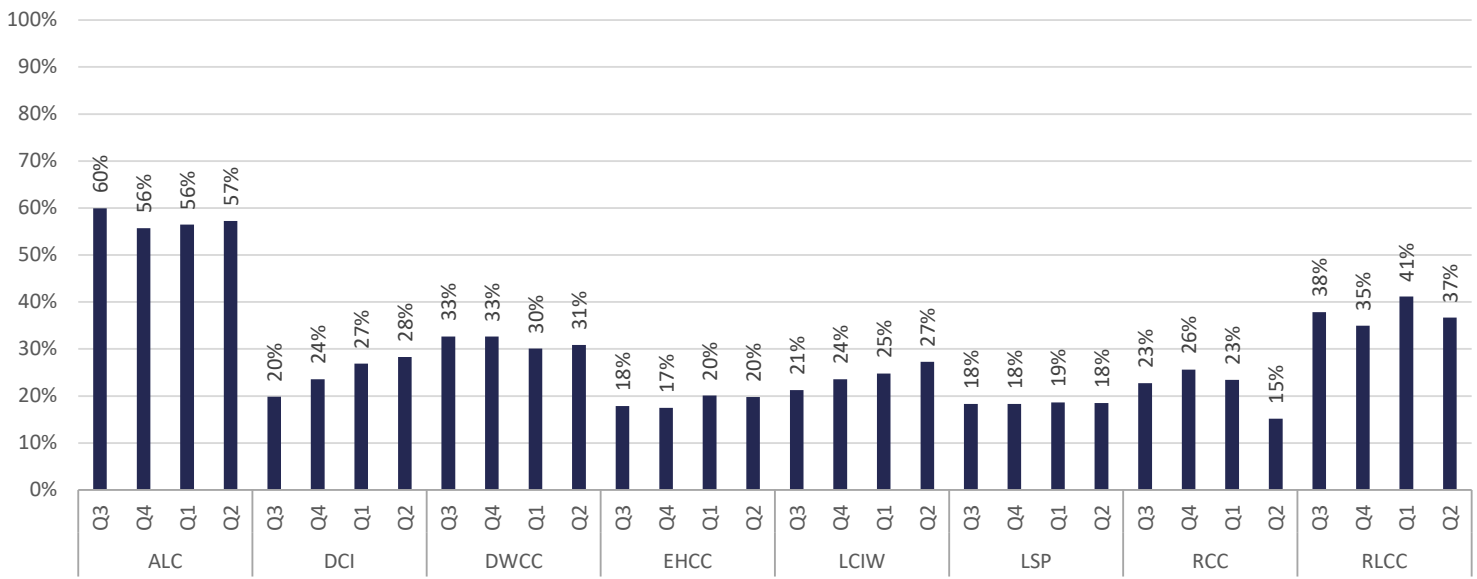




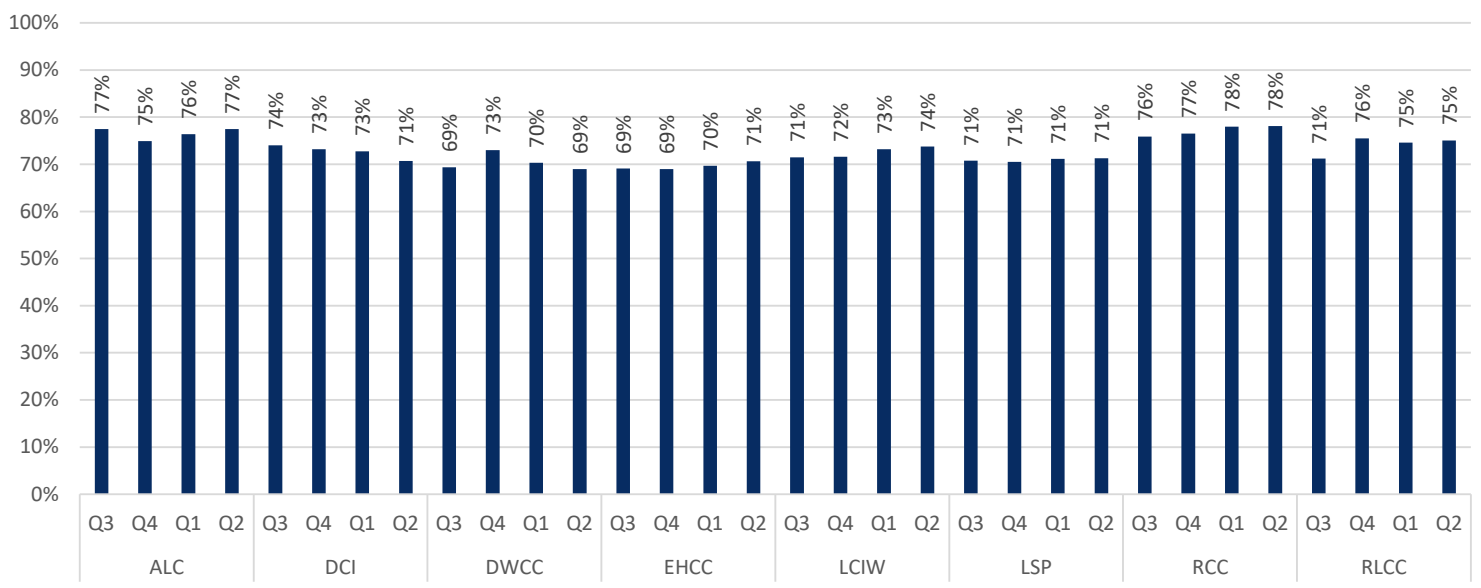


# Behavioral Health

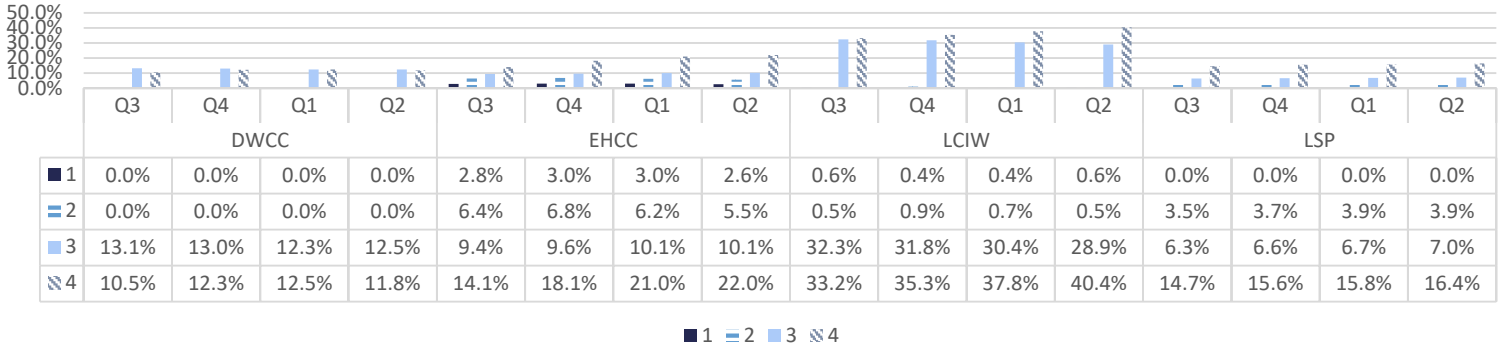
## Percentage of Offenders Diagnosed with SUD on Programming Waitlist



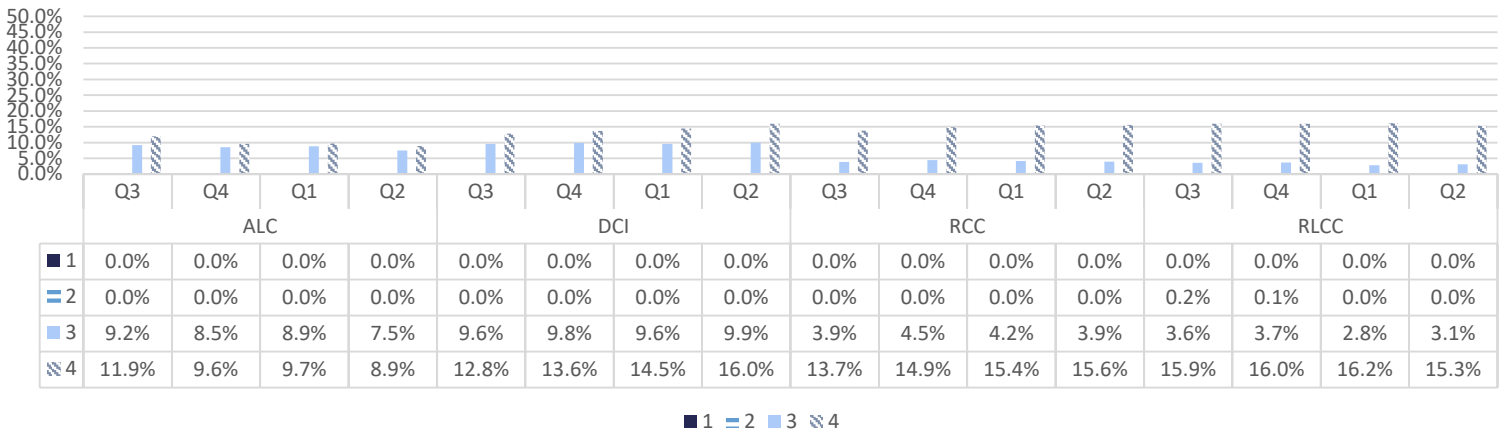
## Percentage of Offenders in Population Diagnosed with SUD



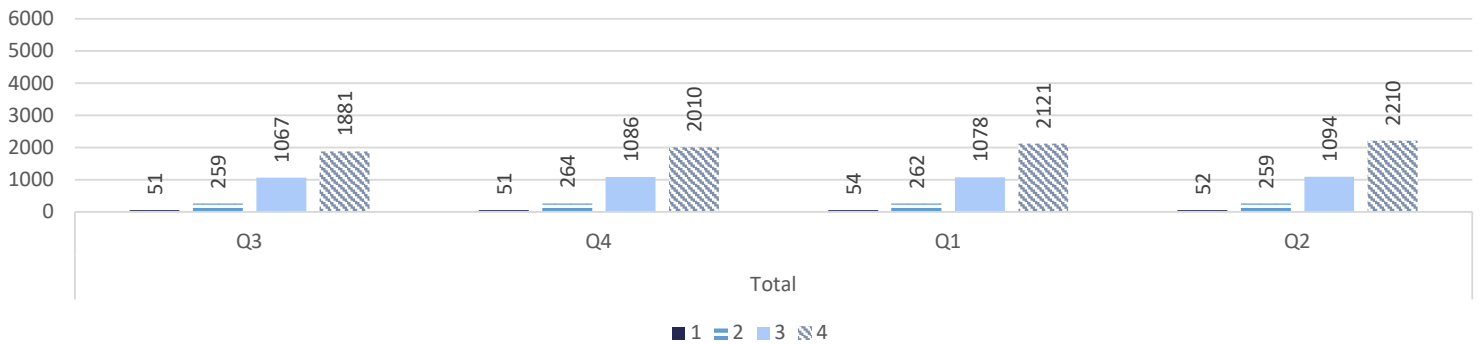
### Mental Health Level of Care Region 1 - By Average Population



### Mental Health Level of Care Region 2 - By Average Population

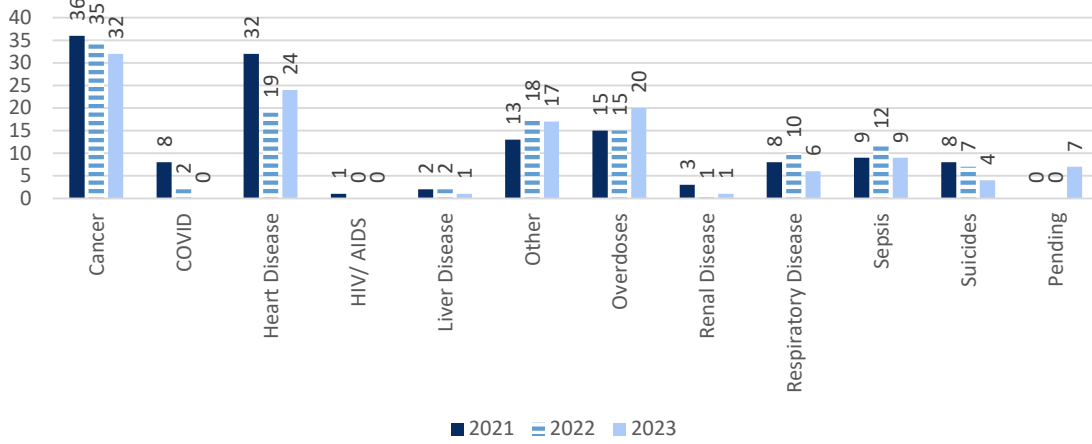


### Mental Health Level of Care

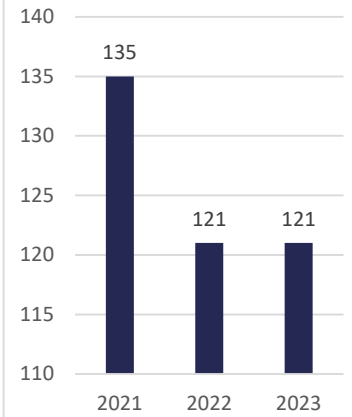


# Deaths

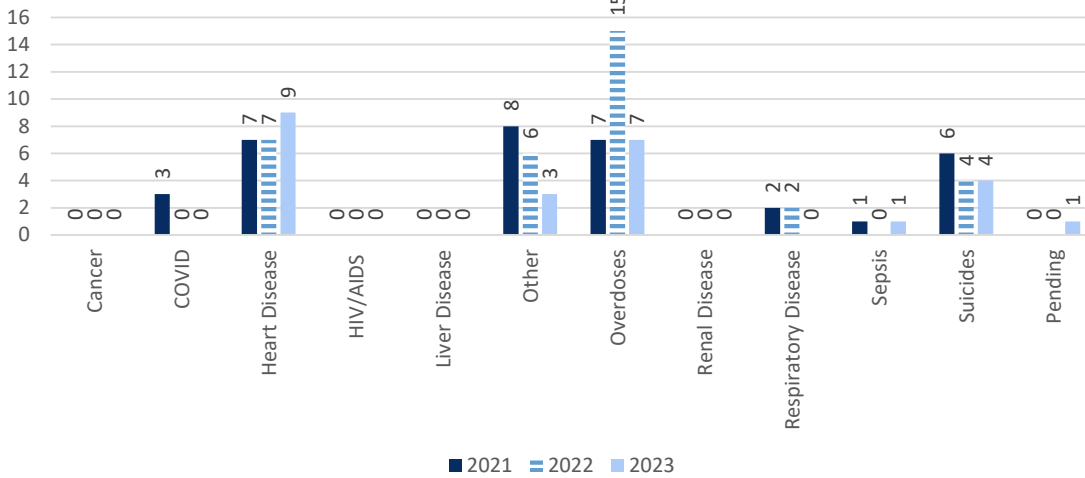
### Annual Deaths in State Facilities



### State Facilities Totals



### Annual Deaths in Local Facilities



### Local Facilities Total

