

Department of Medical and Mental Health

July 2023 - June 2024

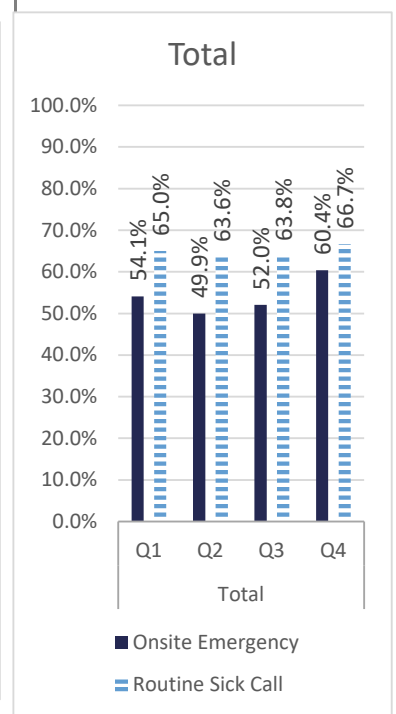
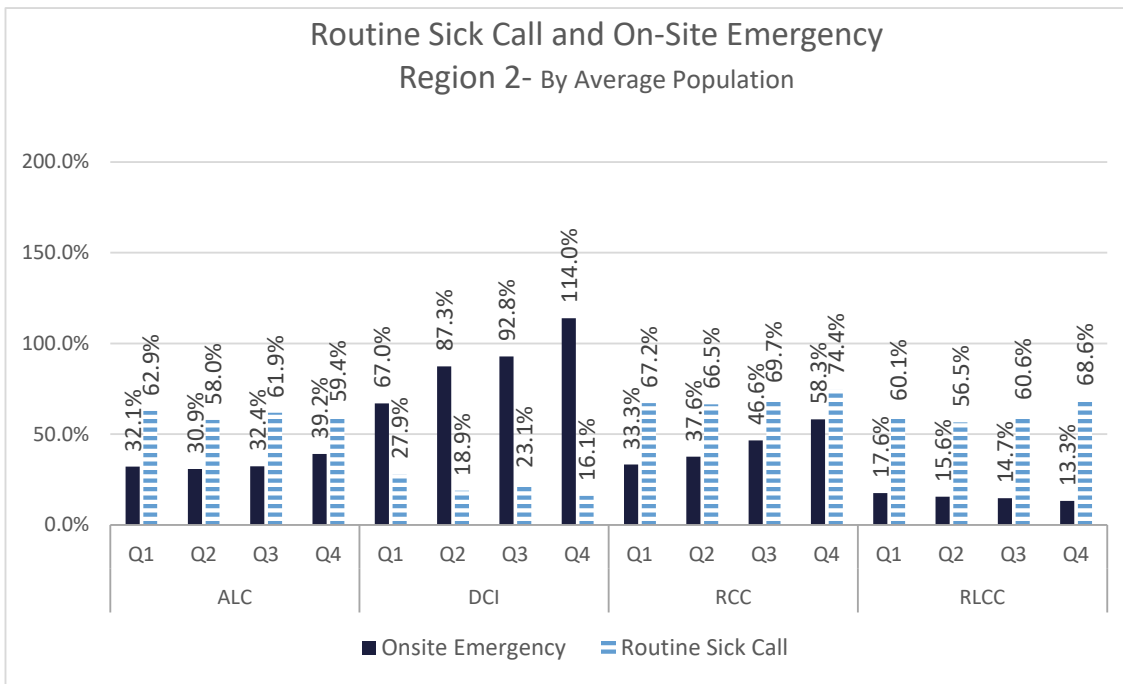
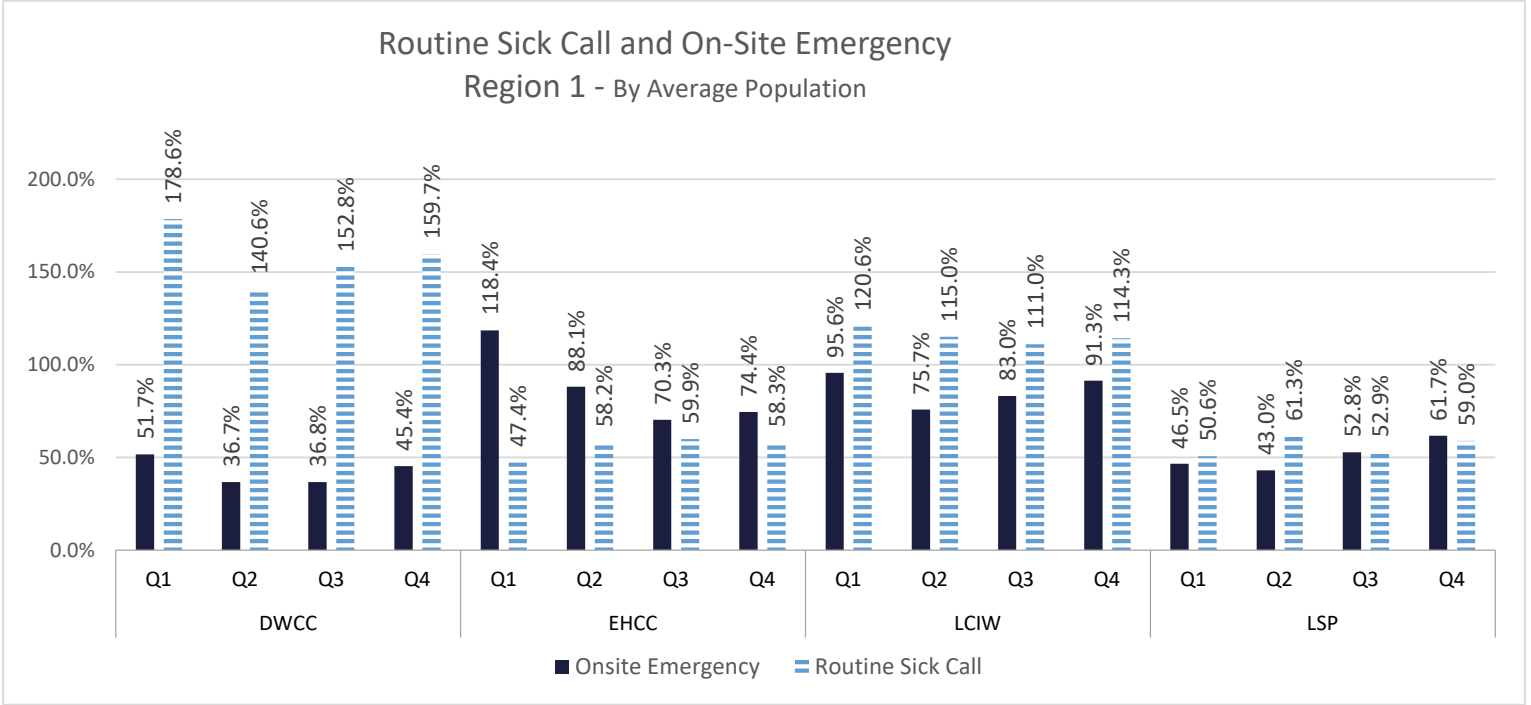
Q1 (July - Sept 2023)

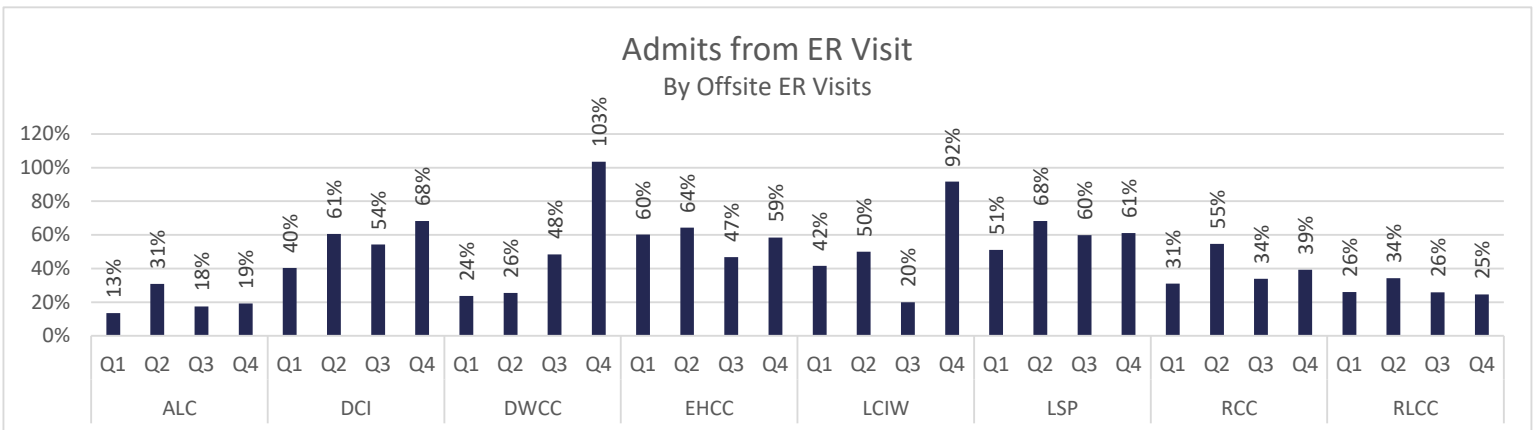
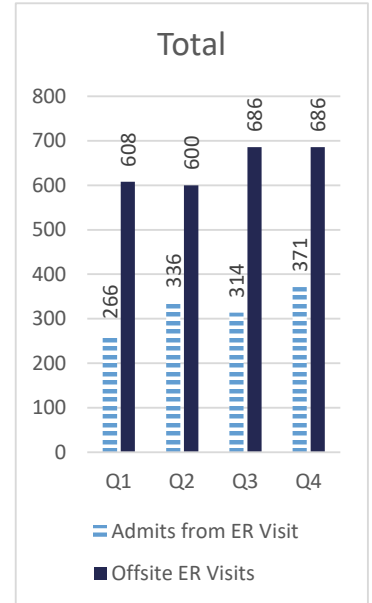
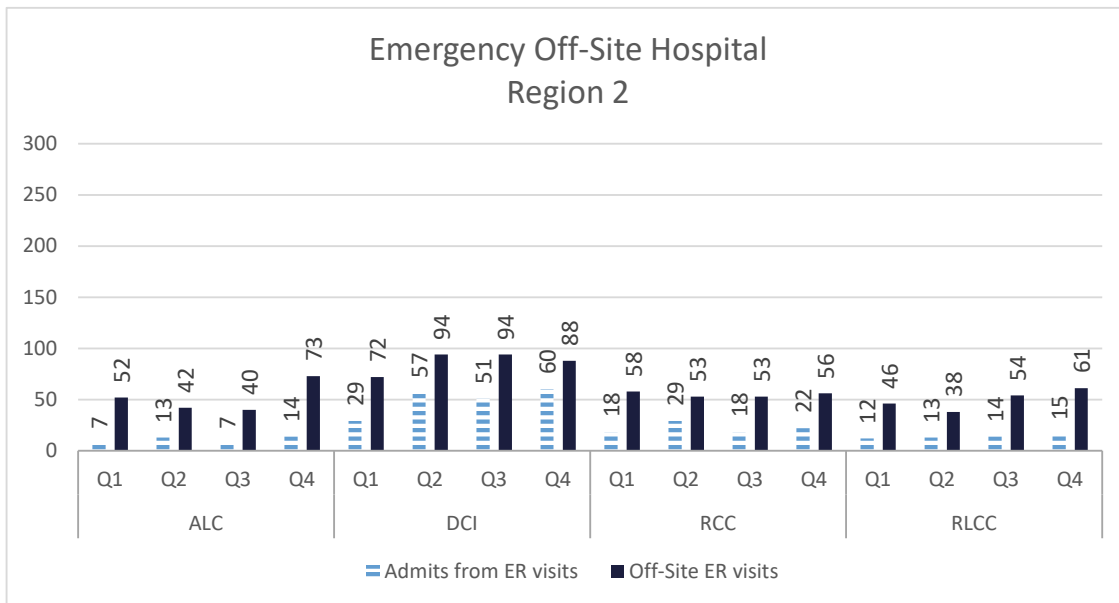
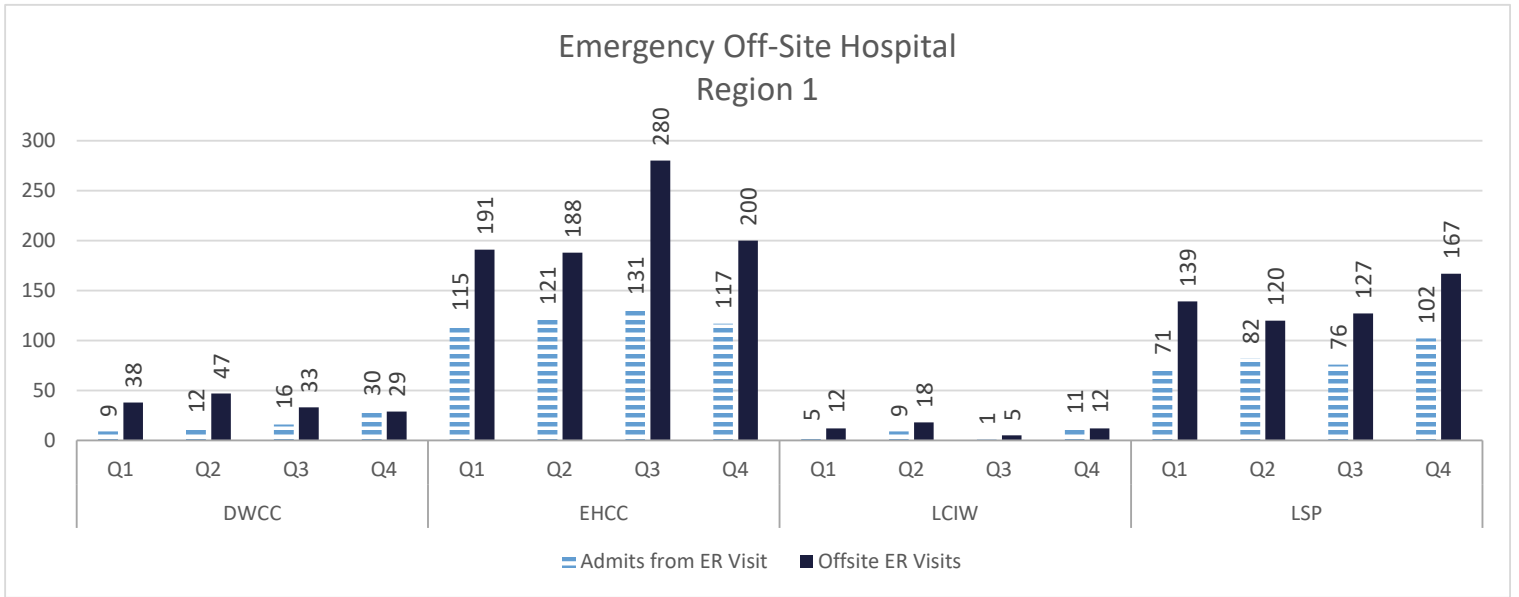
Q2 (Oct - Dec 2023)

Q3 (Jan-March 2024)

Q4 (April - June 2024)

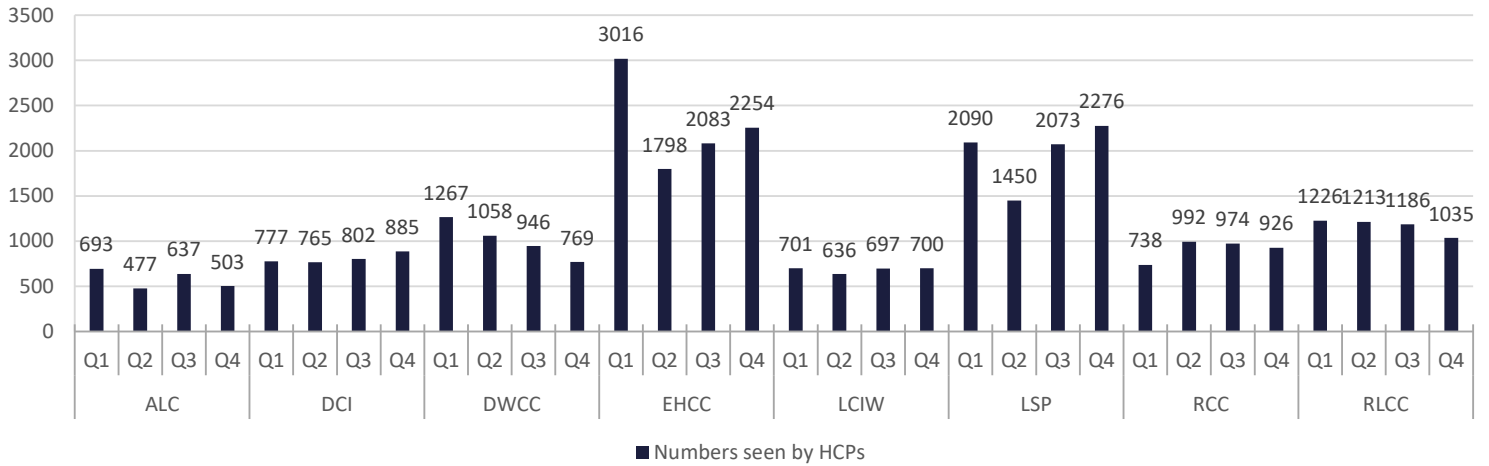
Healthcare Basic Report I



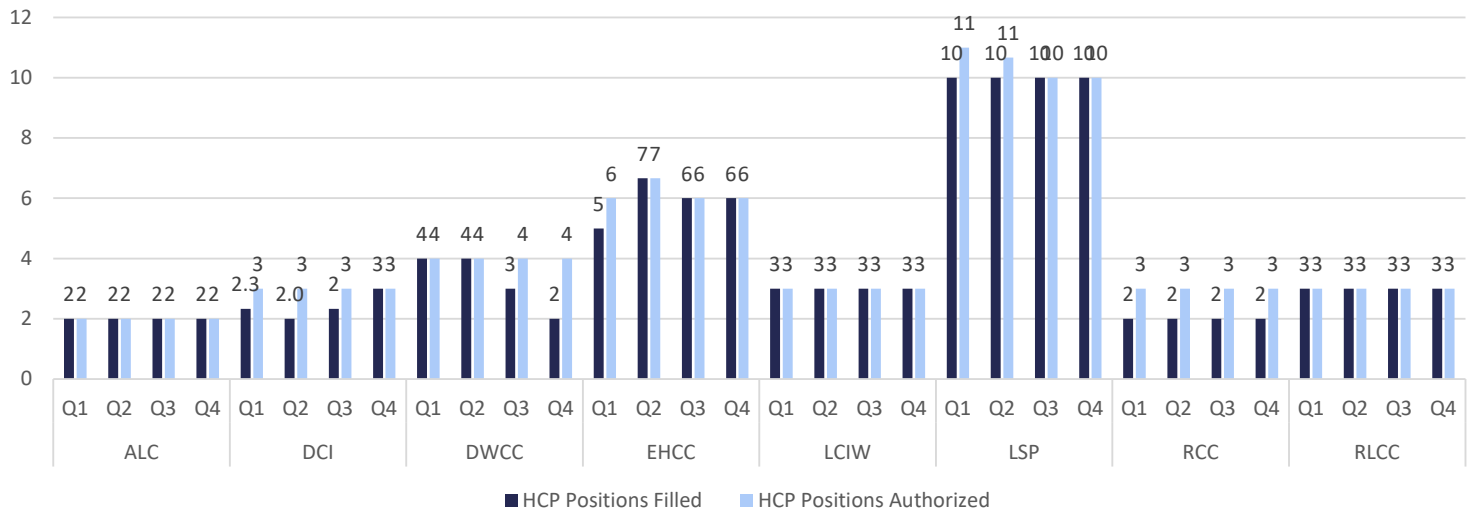


Healthcare Basic Report I

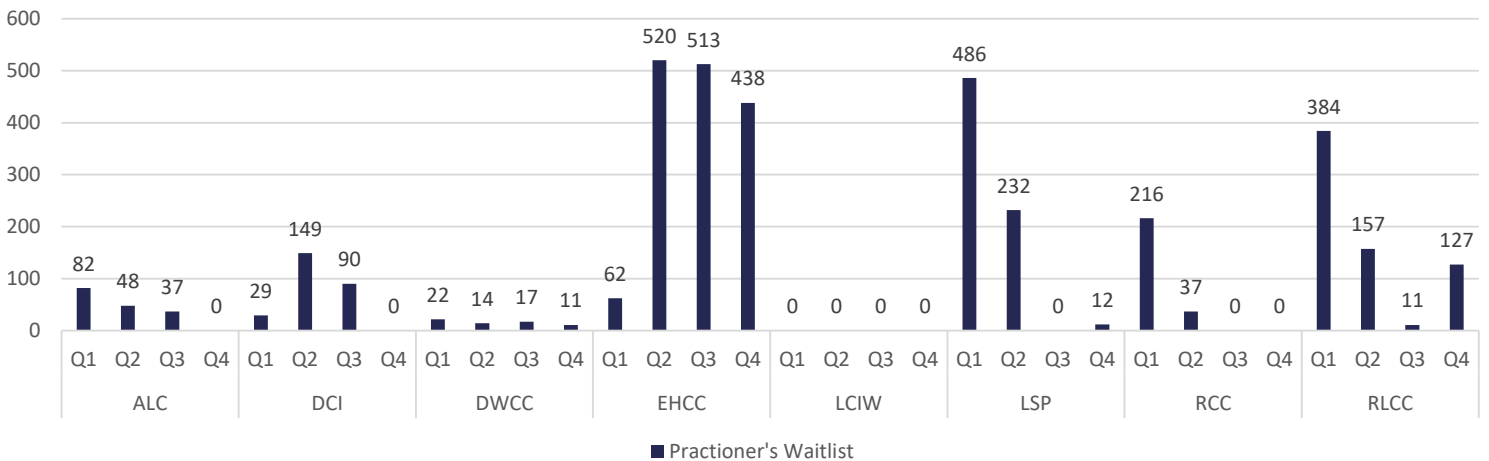
Numbers Seen by Health Care Practitioners



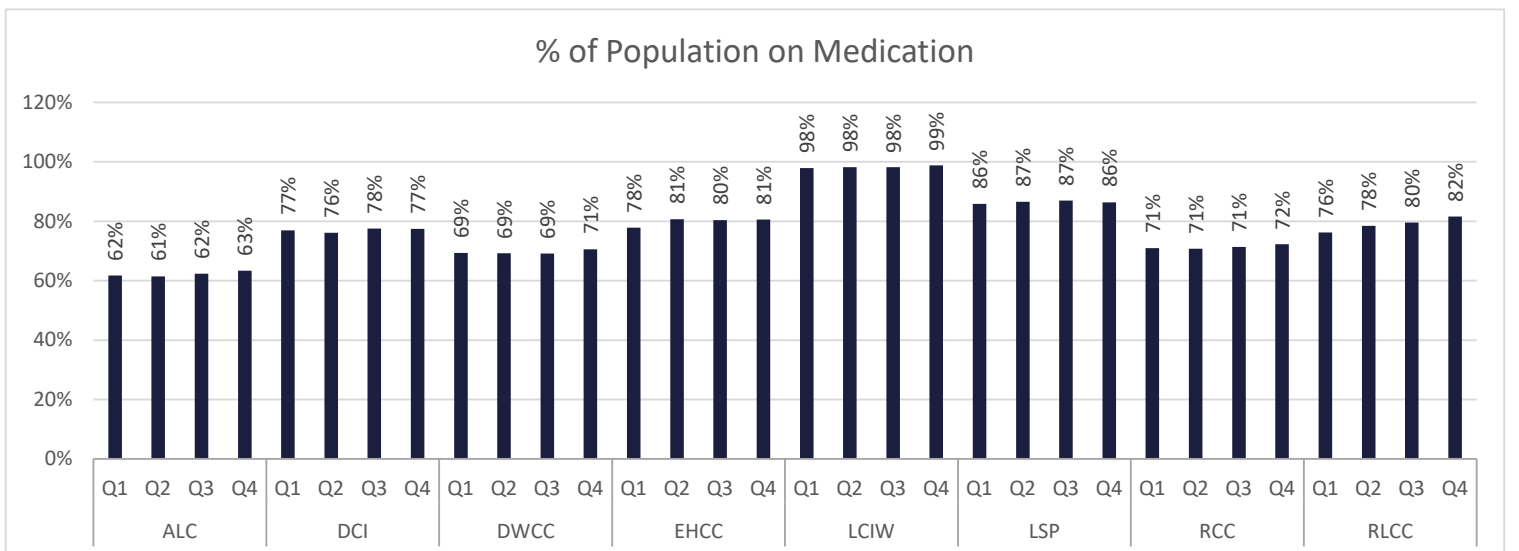
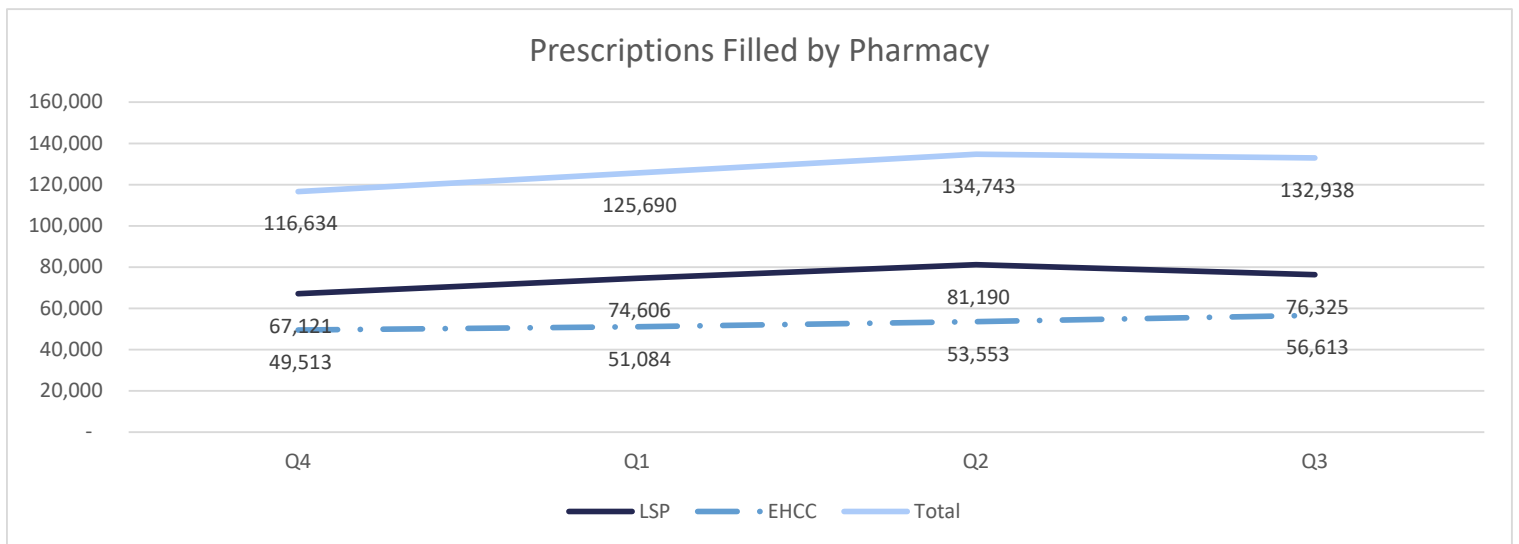
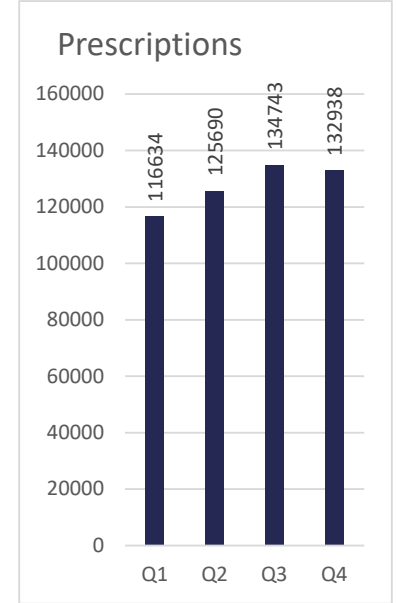
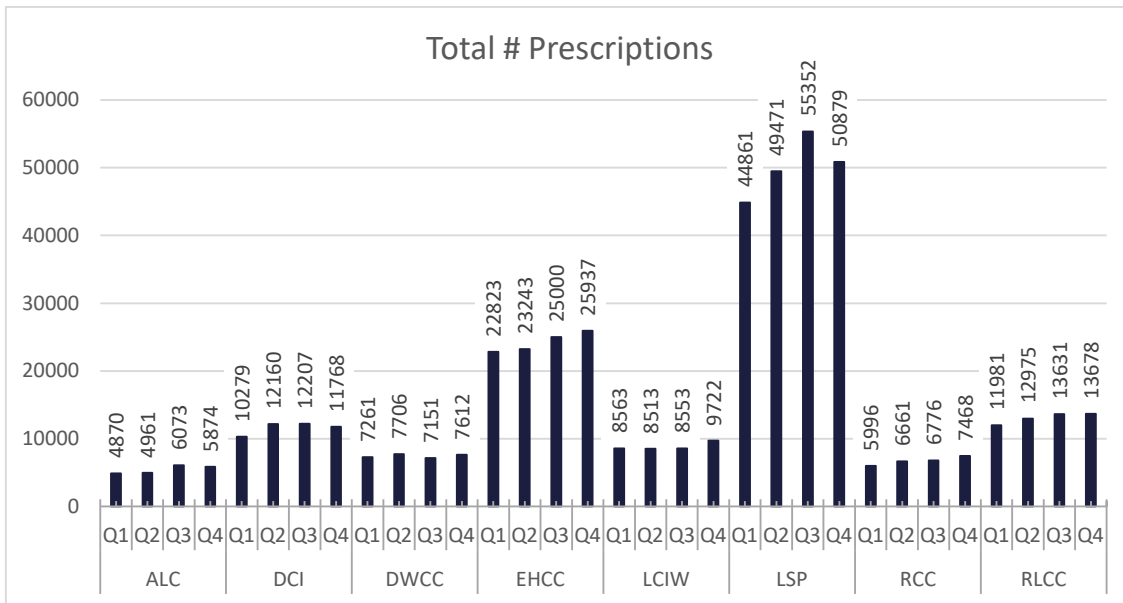
Health Care Practitioners



Health Care Practitioner's Waitlist

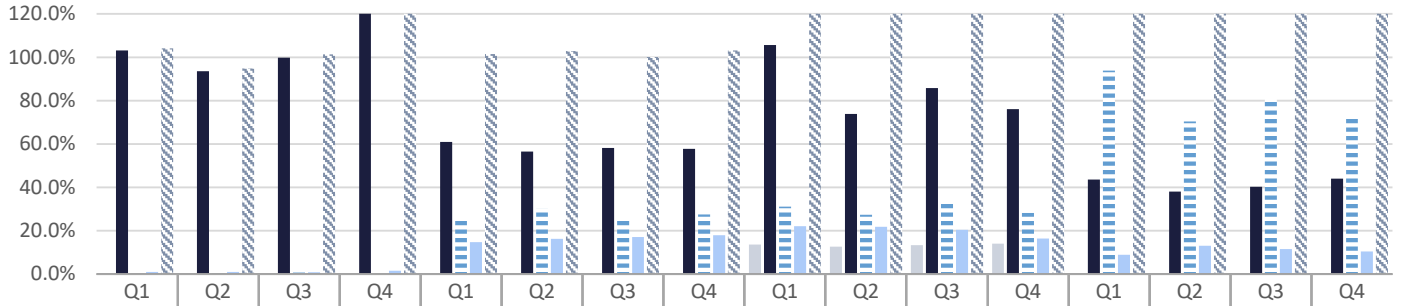


Healthcare Basic Report II



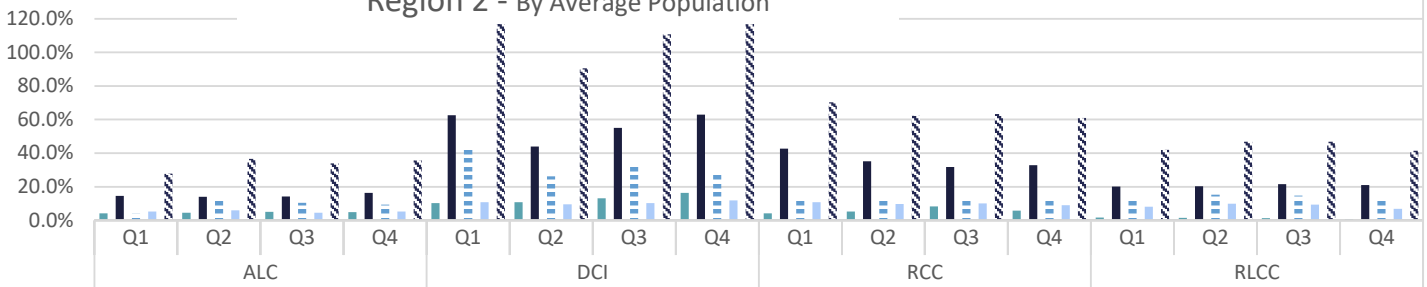
Specialty Clinic Diagnostic Tests & Procedures

Specialty Clinic Diagnostic Tests & Procedures Region 1 - By Average Population



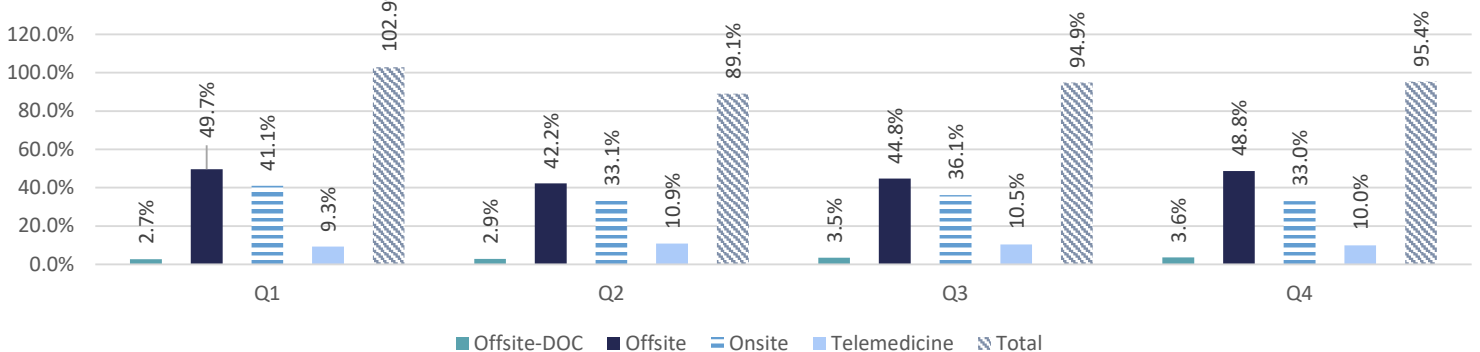
	DWCC				EHCC				LCIW				LSP			
■ Offsite-DOC	0.0%	0.0%	0.0%	0.0%	0.0%	0.0%	0.0%	0.0%	13.7%	12.6%	13.3%	14.0%	0.0%	0.0%	0.0%	0.0%
■ Offsite	103.1%	93.6%	99.8%	122.4%	60.9%	56.5%	58.1%	57.8%	105.6%	73.9%	85.7%	76.0%	43.6%	38.1%	40.2%	44.1%
■ Onsite	0.1%	0.2%	0.7%	0.0%	25.9%	30.1%	24.8%	27.5%	31.1%	27.3%	32.4%	28.2%	93.8%	70.3%	81.0%	73.0%
■ Telemedicine	0.9%	1.0%	0.8%	1.6%	14.7%	16.2%	17.1%	17.9%	22.0%	21.8%	20.4%	16.4%	8.9%	13.1%	11.6%	10.5%
▨ Total	104.1%	94.8%	101.3%	124.0%	101.5%	102.9%	100.1%	103.1%	172.4%	135.7%	151.9%	134.6%	146.3%	121.5%	132.8%	127.6%

Specialty Clinic Diagnostic Tests & Procedures Region 2 - By Average Population



	ALC				DCI				RCC				RLCC			
■ Offsite-DOC	4.2%	4.4%	5.0%	4.9%	10.3%	10.9%	13.1%	16.4%	4.1%	5.2%	8.3%	5.8%	1.6%	1.5%	1.3%	0.7%
■ Offsite	14.5%	13.9%	14.2%	16.3%	62.6%	44.0%	55.1%	63.0%	42.6%	35.2%	31.7%	32.8%	20.1%	20.2%	21.6%	21.0%
■ Onsite	3.9%	12.2%	10.4%	9.4%	43.5%	26.2%	32.2%	27.1%	12.9%	12.1%	13.2%	13.4%	12.2%	15.2%	14.7%	12.9%
■ Telemedicine	5.1%	6.0%	4.4%	5.2%	10.9%	9.5%	10.3%	11.9%	10.7%	9.7%	10.1%	9.0%	8.1%	9.9%	9.4%	6.8%
▨ Total	27.7%	36.6%	34.0%	35.8%	127.3%	90.6%	110.7%	118.3%	70.3%	62.2%	63.3%	61.0%	42.0%	46.8%	46.9%	41.4%

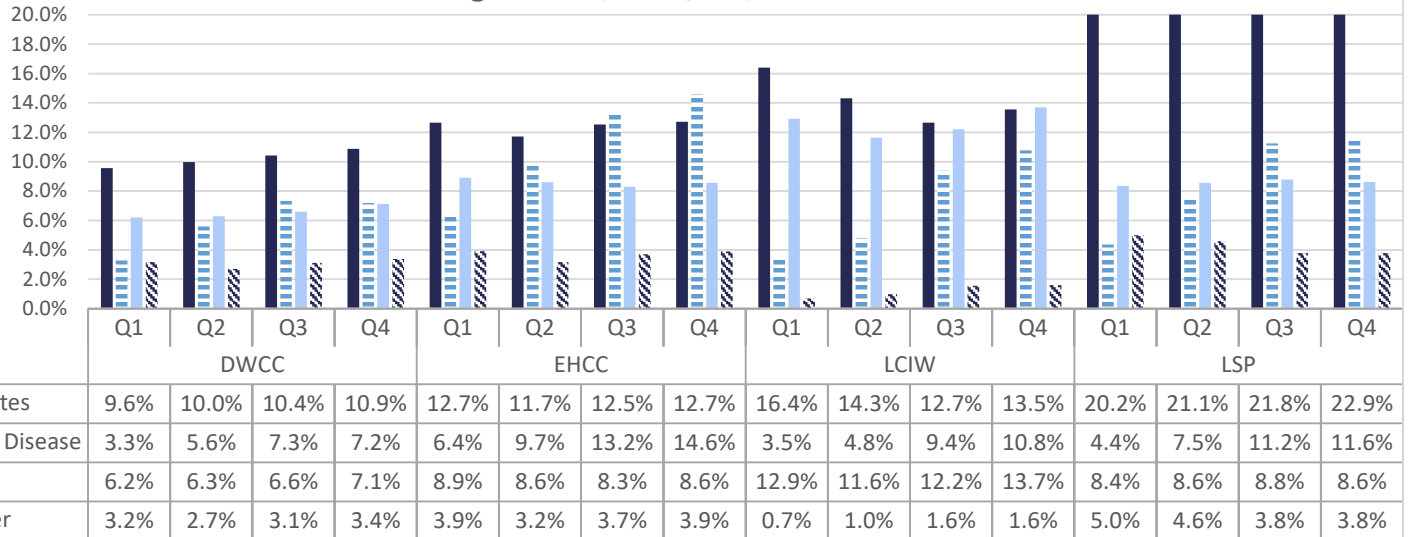
Specialty Clinic Diagnostic Tests & Procedures Total - By Average Population



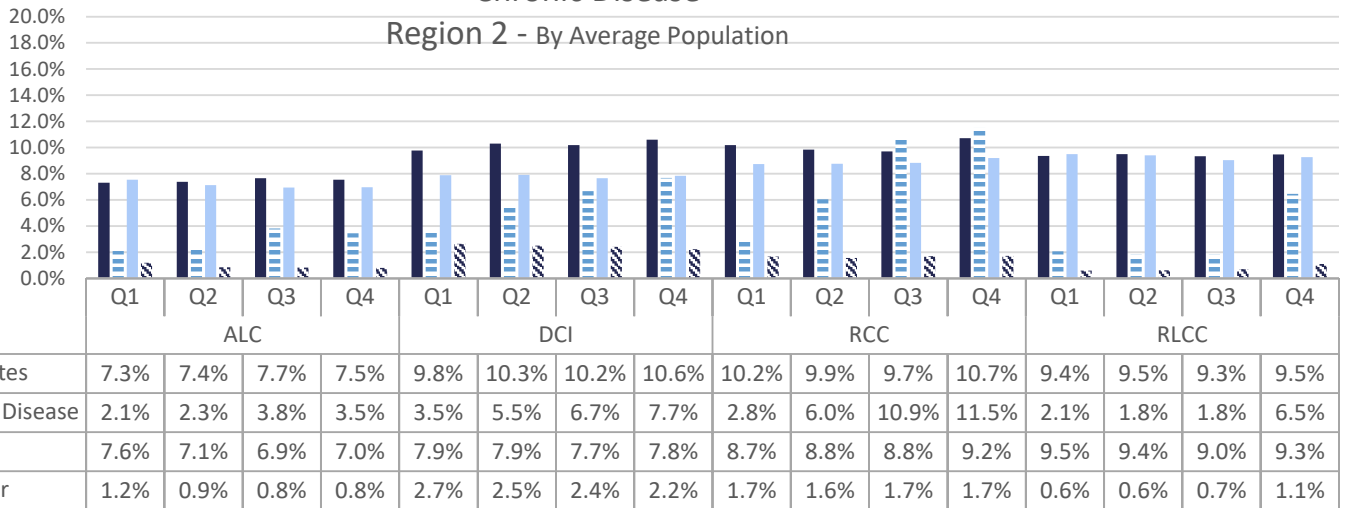
■ Offsite-DOC ■ Offsite ■ Onsite ■ Telemedicine ▨ Total

Chronic Disease

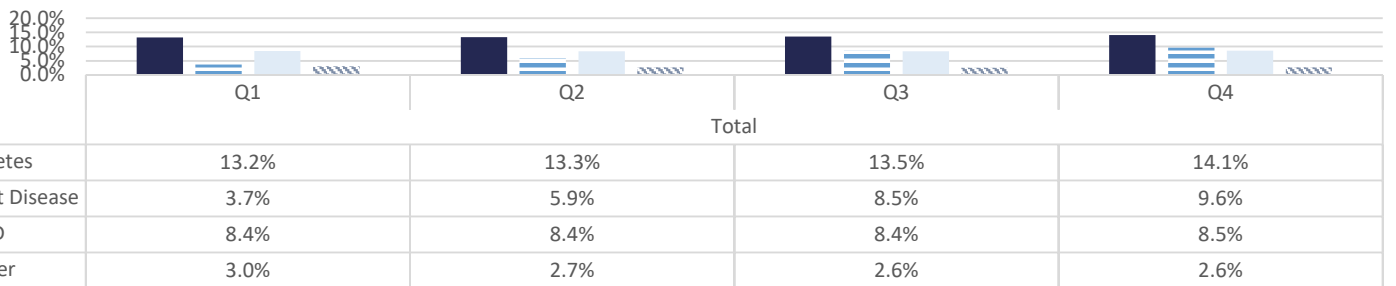
Chronic Disease Region 1 - By Average Population



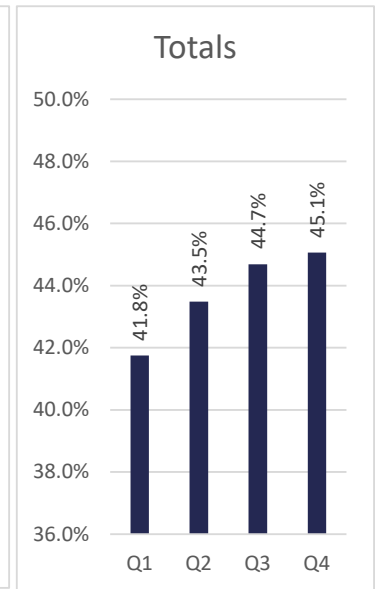
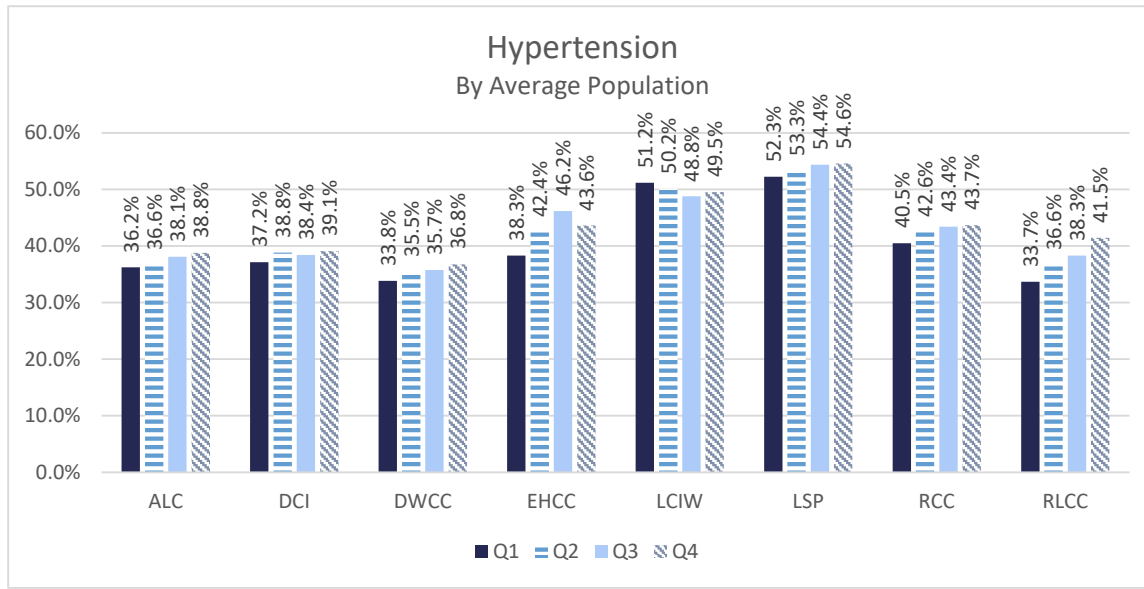
Chronic Disease Region 2 - By Average Population



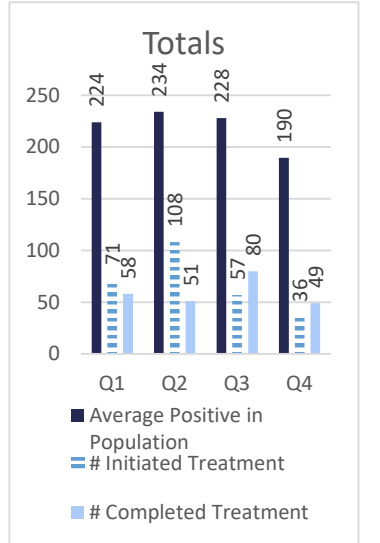
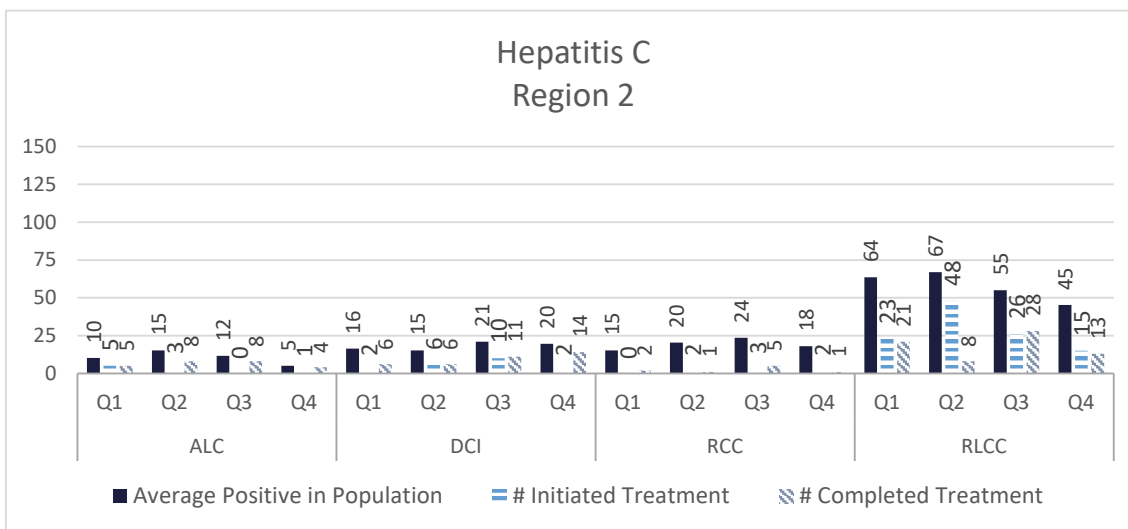
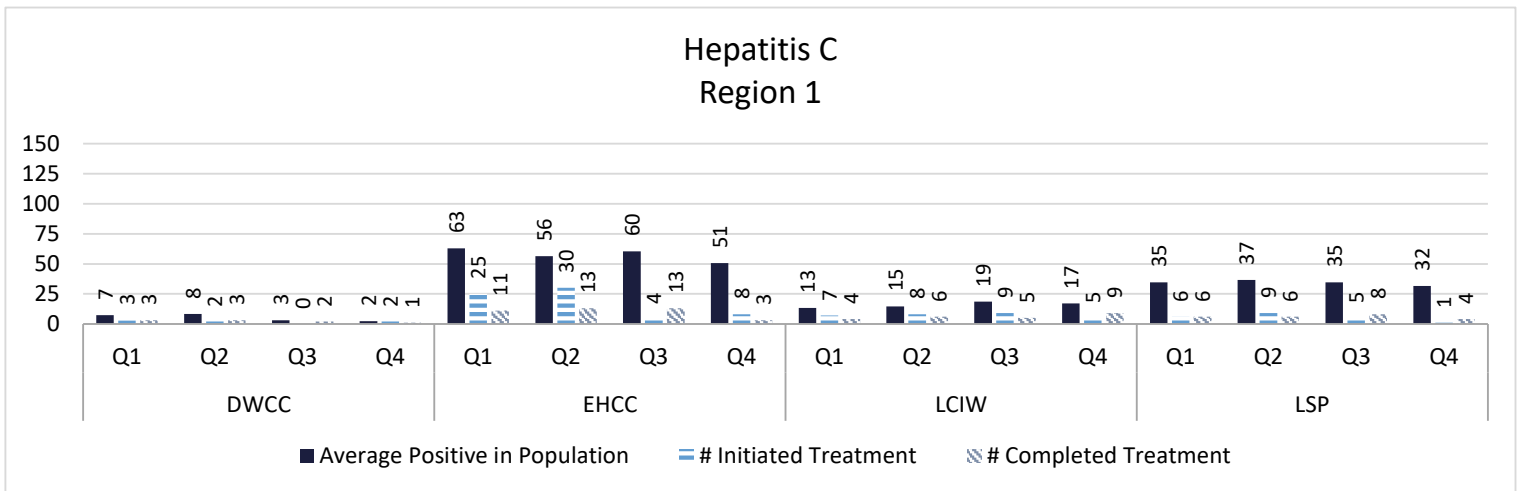
Chronic Disease Total- By Average Population

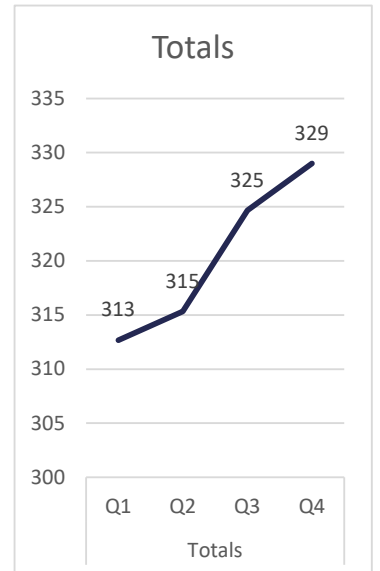
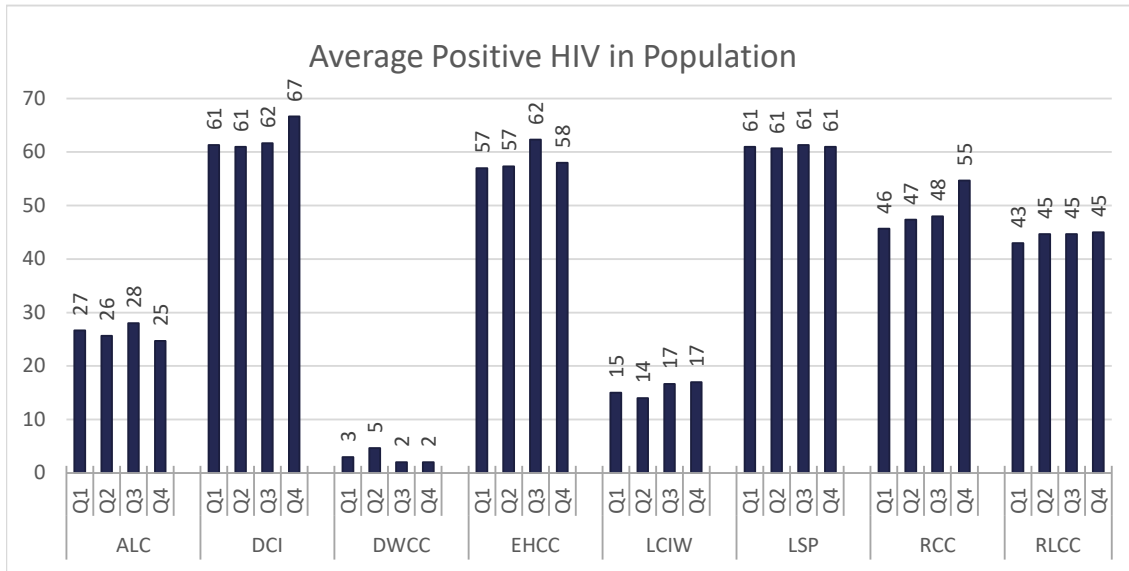


■ Diabetes ■ Heart Disease ■ COPD ■ Cancer



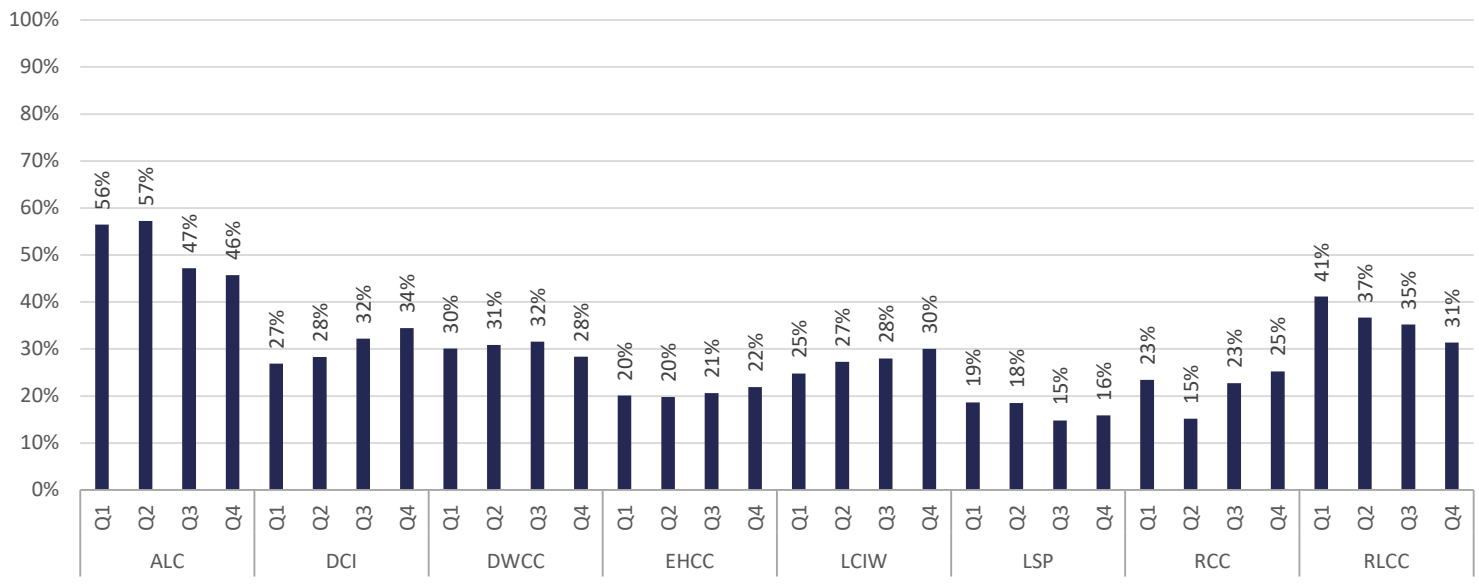
Communicable Disease



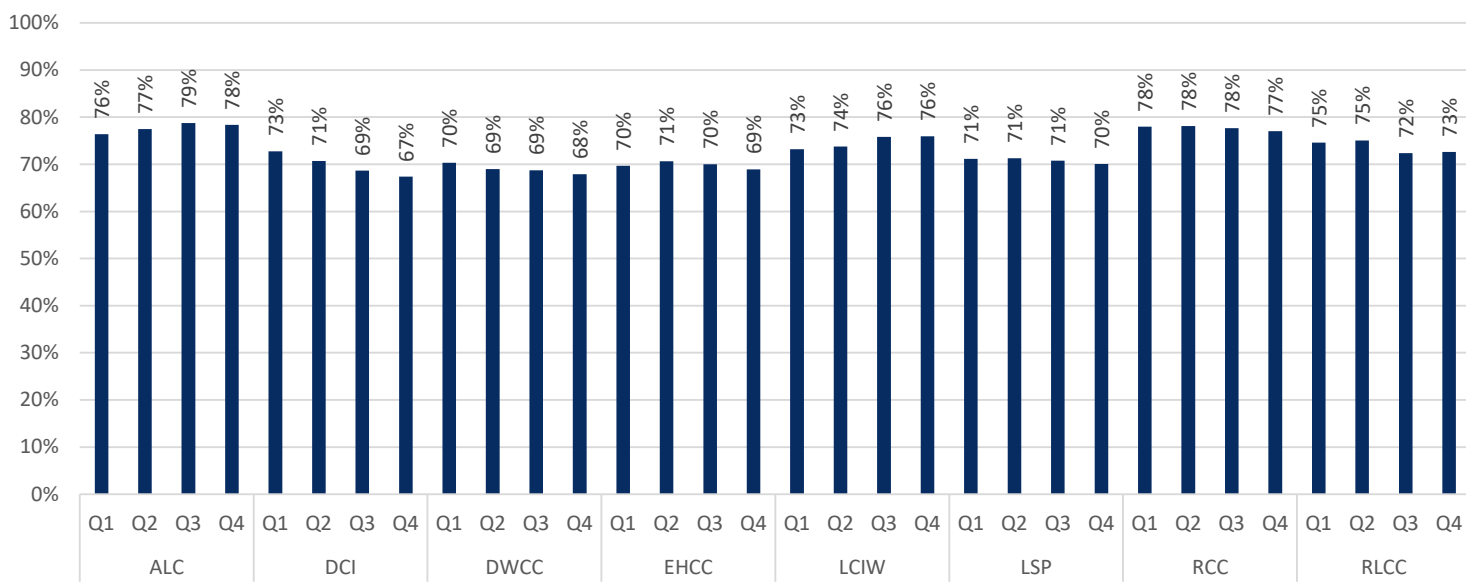


Behavioral Health

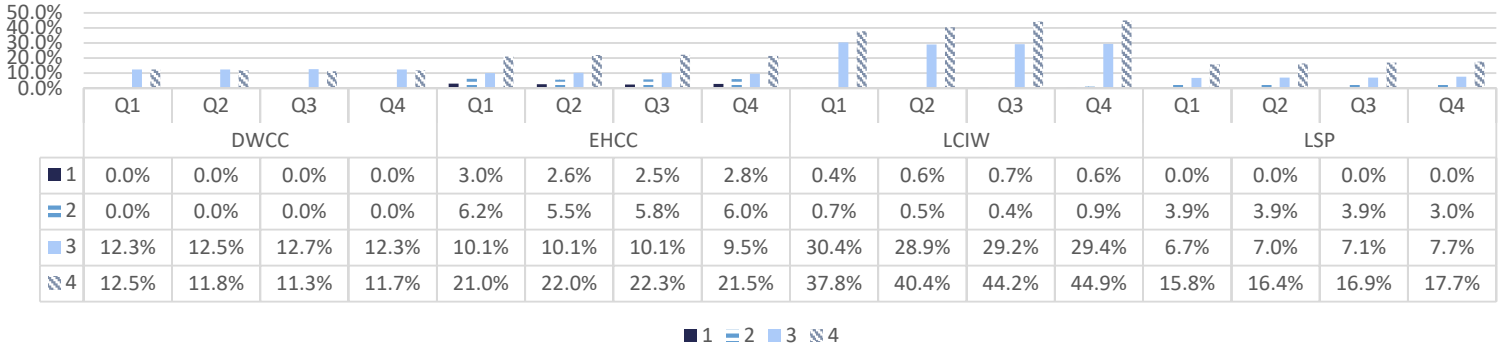
Percentage of Offenders Diagnosed with SUD on Programming Waitlist



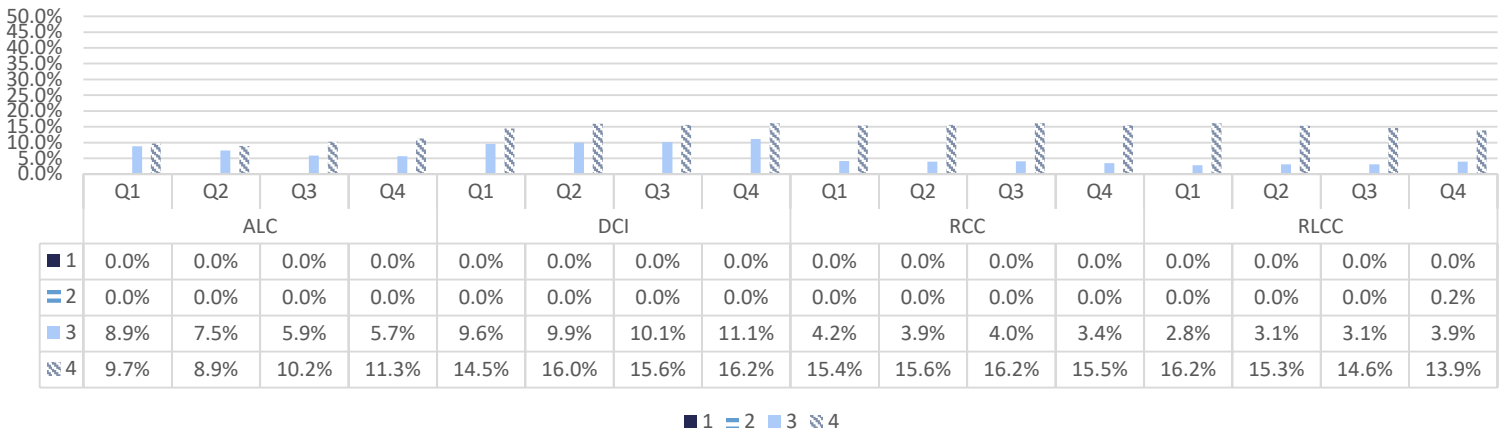
Percentage of Offenders in Population Diagnosed with SUD



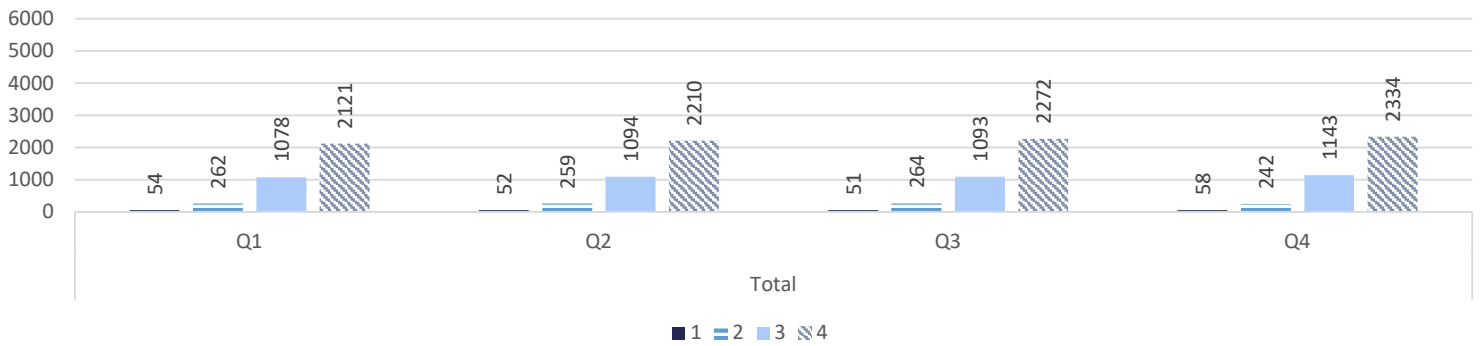
Mental Health Level of Care Region 1 - By Average Population



Mental Health Level of Care Region 2 - By Average Population

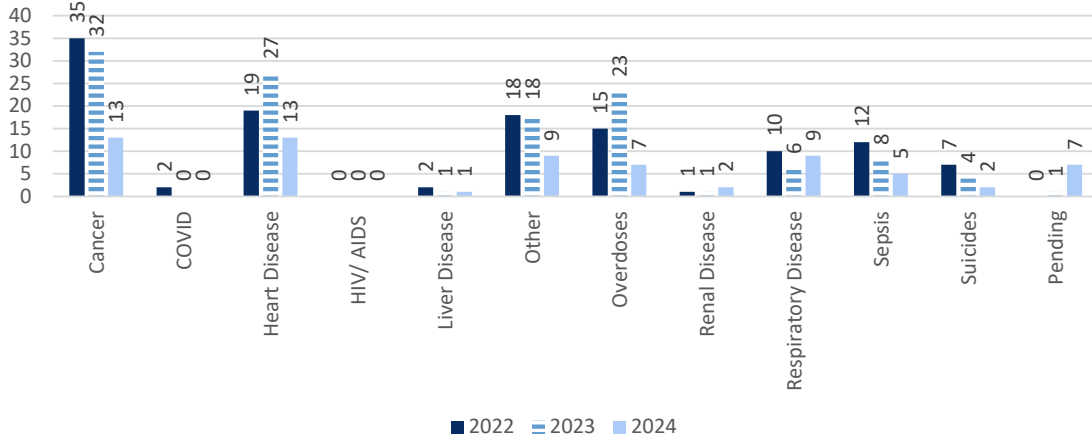


Mental Health Level of Care

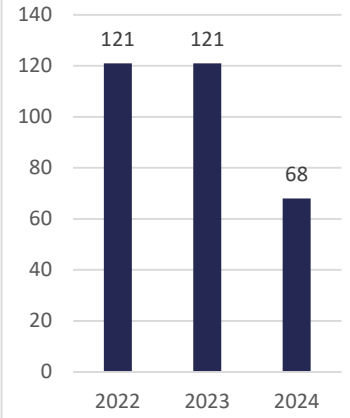


Deaths

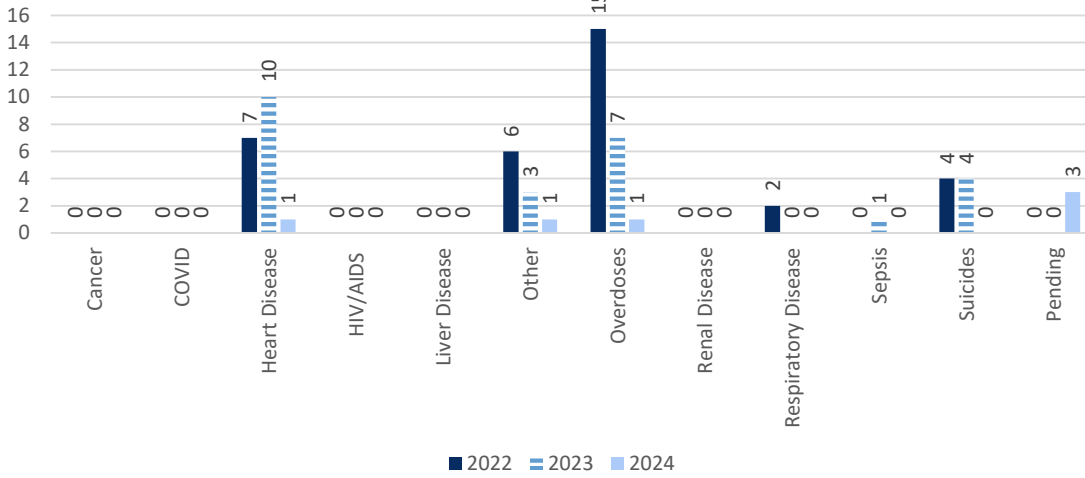
Annual Deaths in State Facilities



State Facilities Totals



Annual Deaths in Local Facilities



Local Facilities Total

