

Department of Medical and Mental Health

July 2024 - June 2025

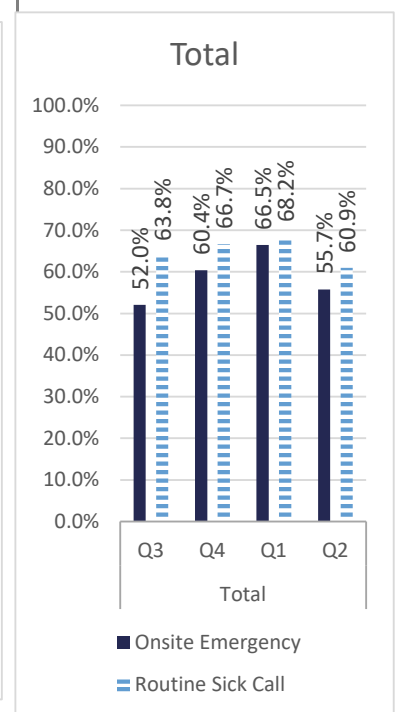
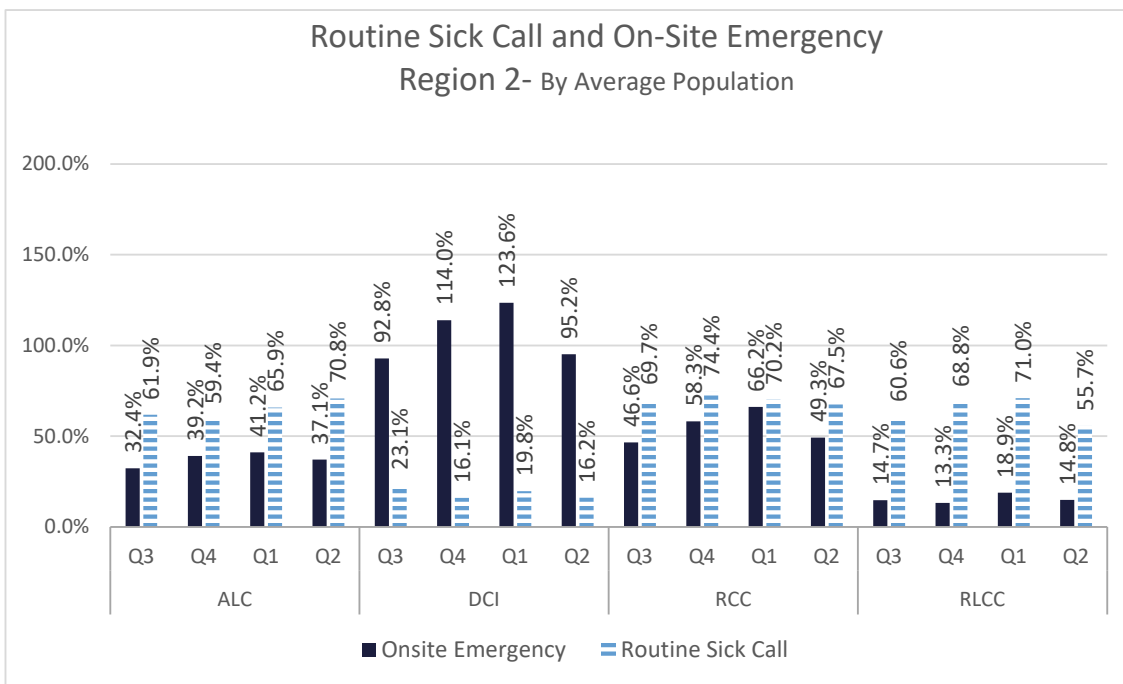
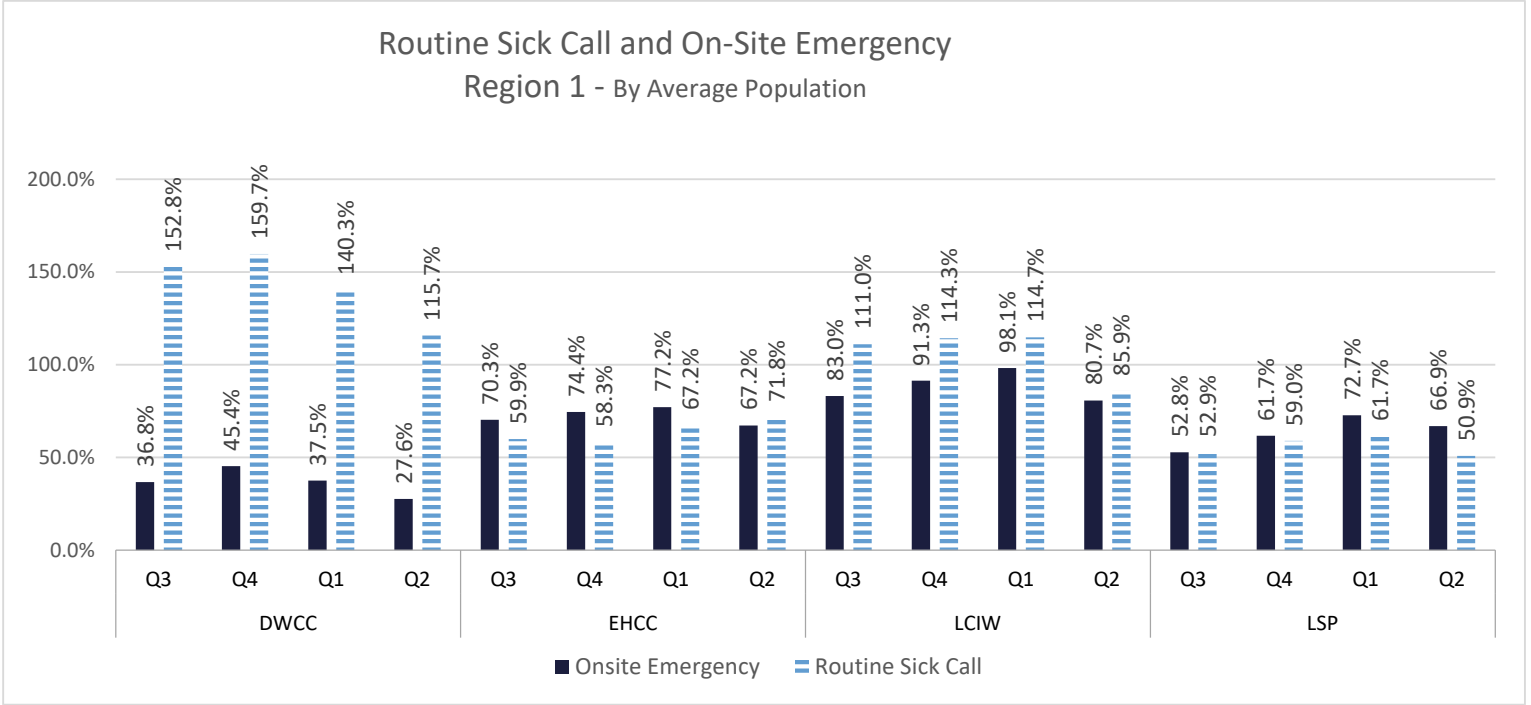
Q3 (Jan-March 2024)

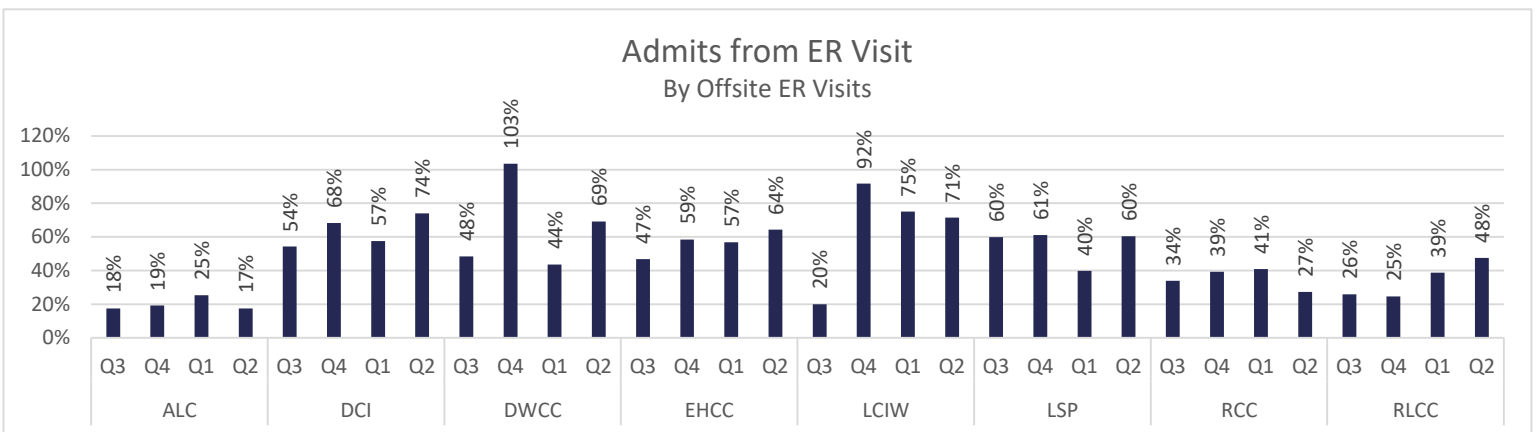
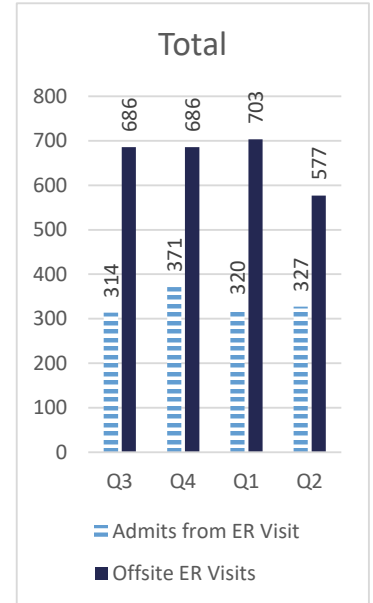
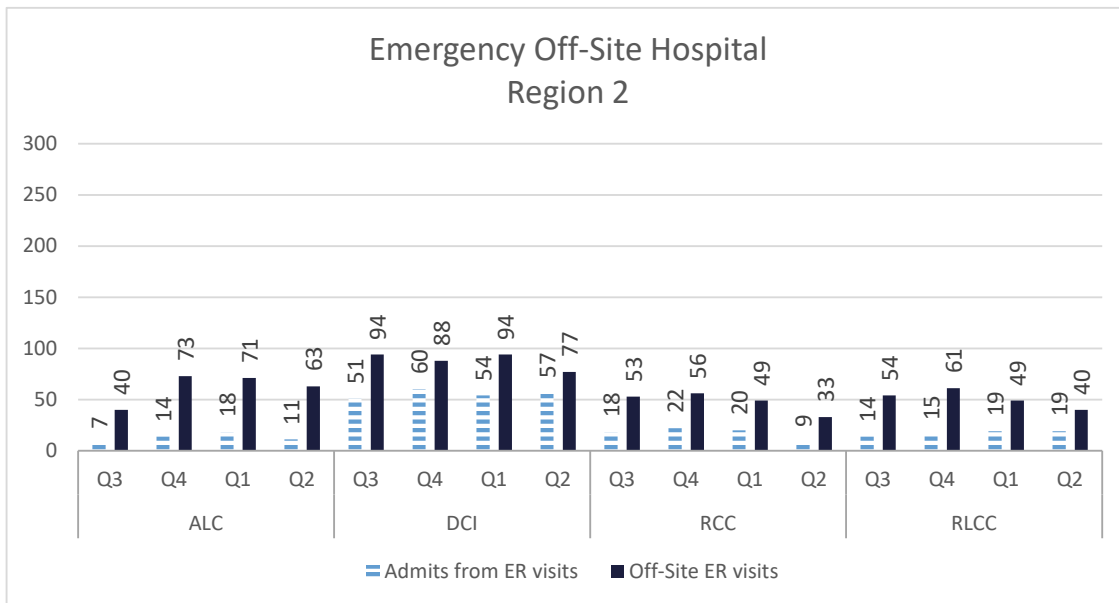
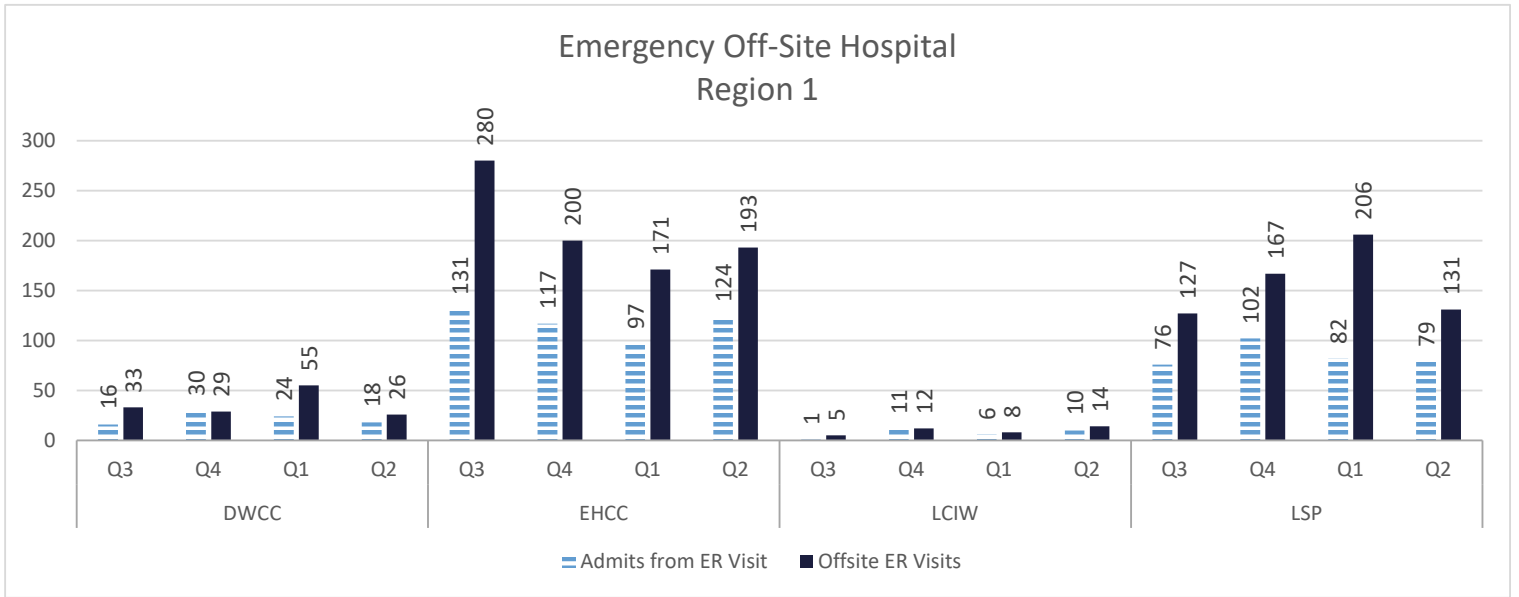
Q4 (April-June 2024)

Q1 (July-Sept 2024)

Q2 (Oct-Dec 2024)

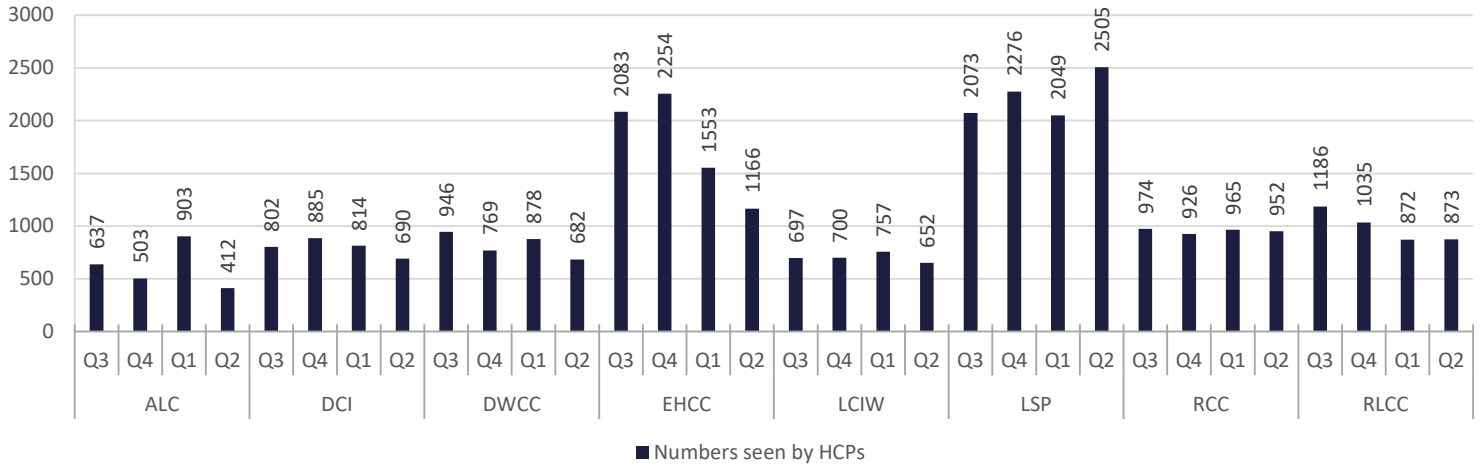
Healthcare Basic Report I



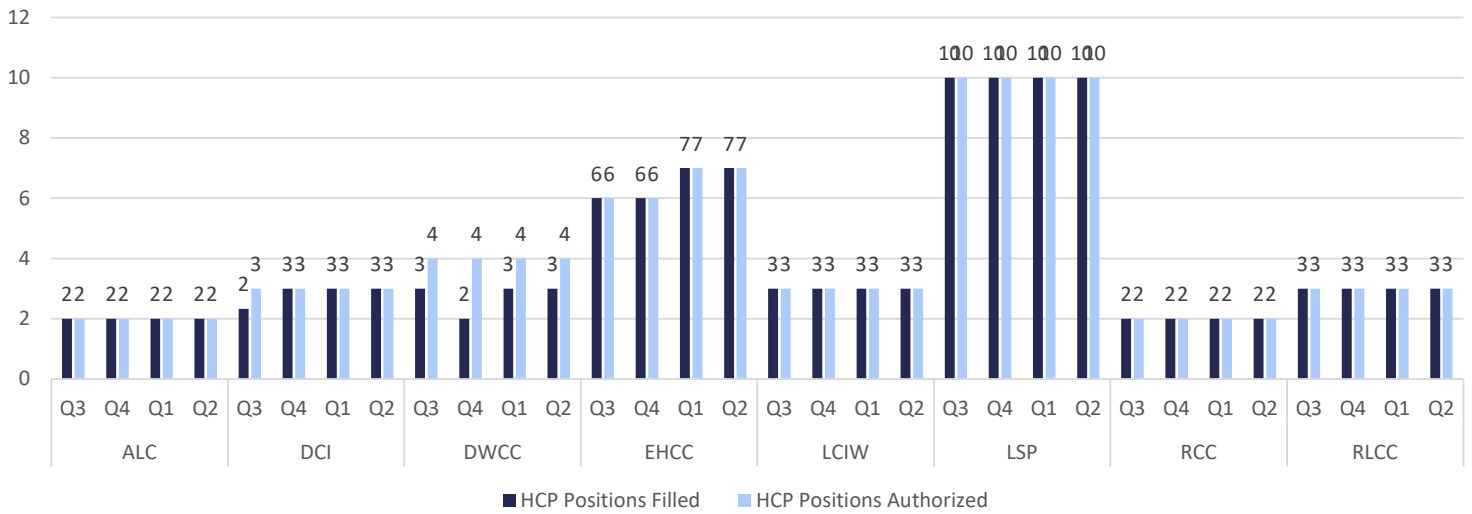


Healthcare Basic Report I

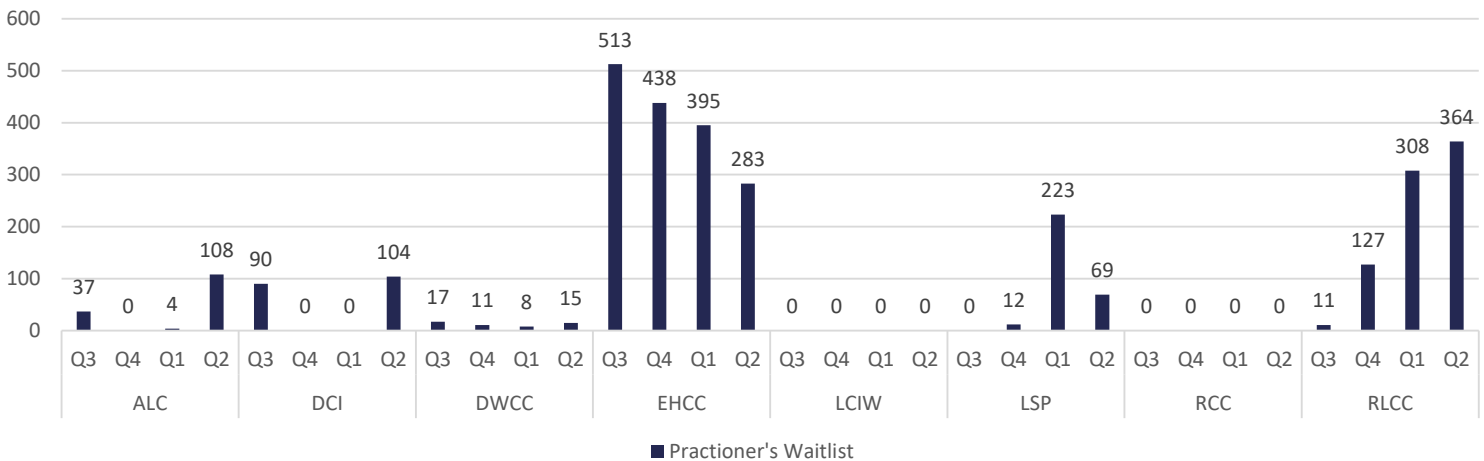
Numbers Seen by Health Care Practitioners



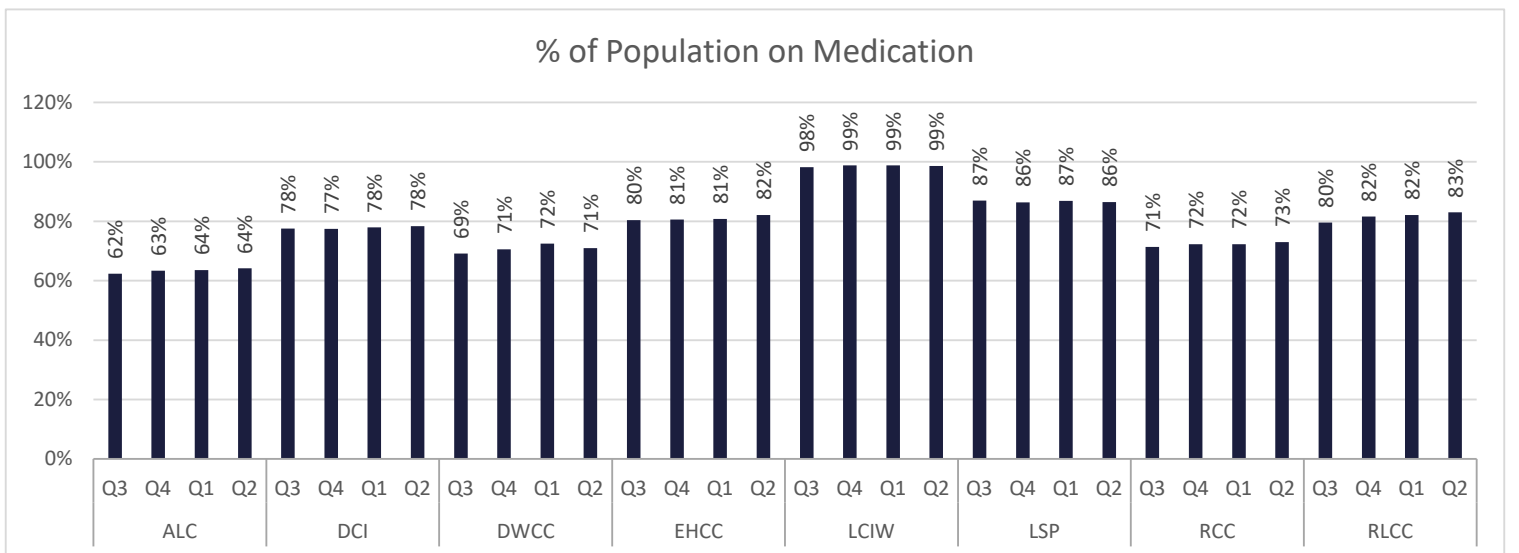
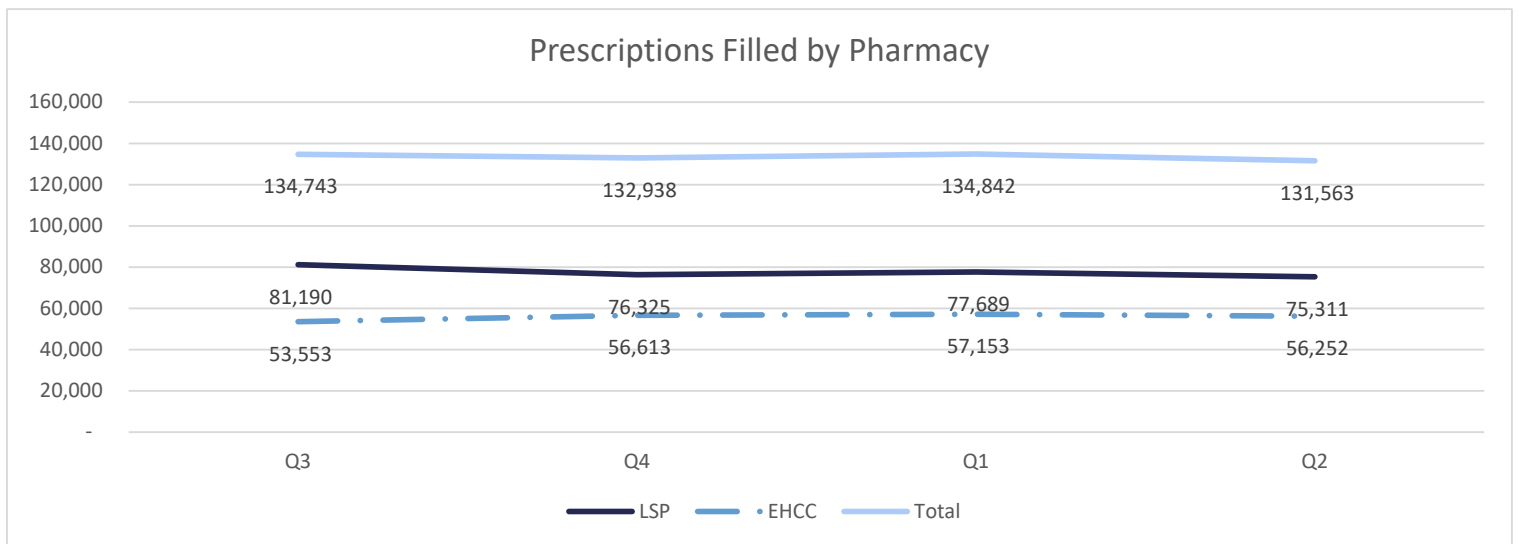
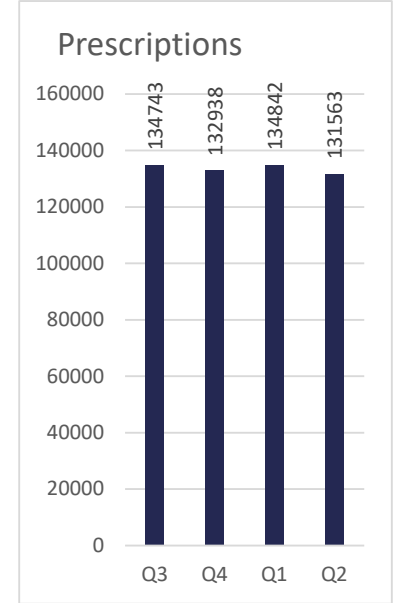
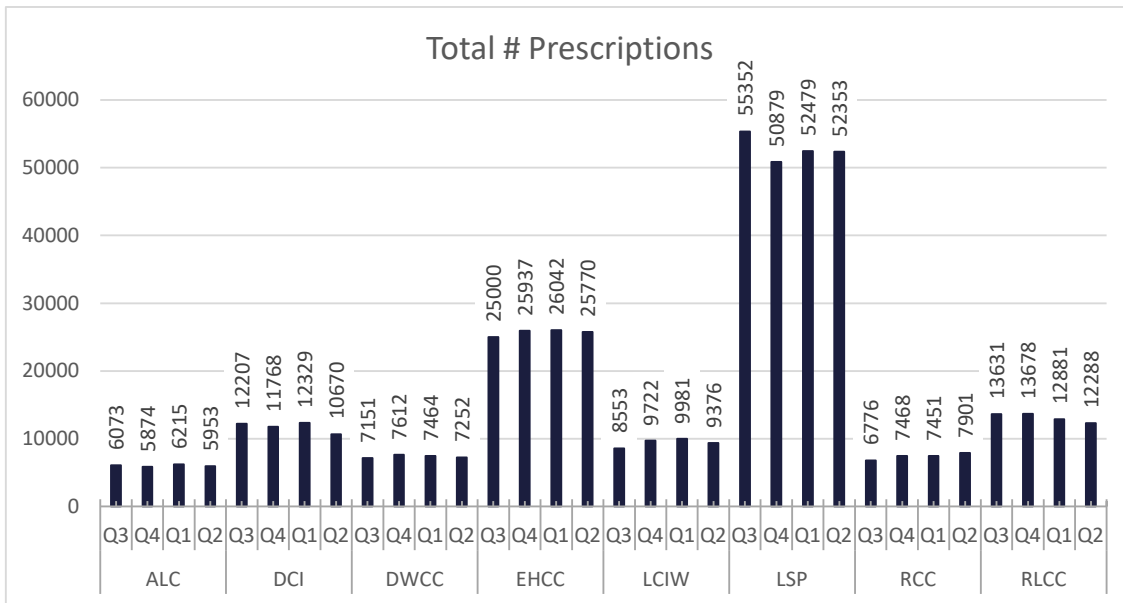
Health Care Practitioners



Health Care Practitioner's Waitlist

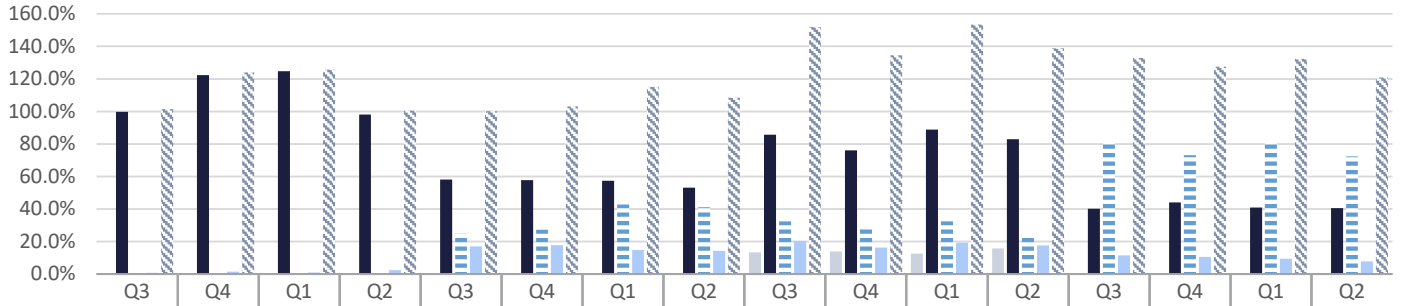


Healthcare Basic Report II



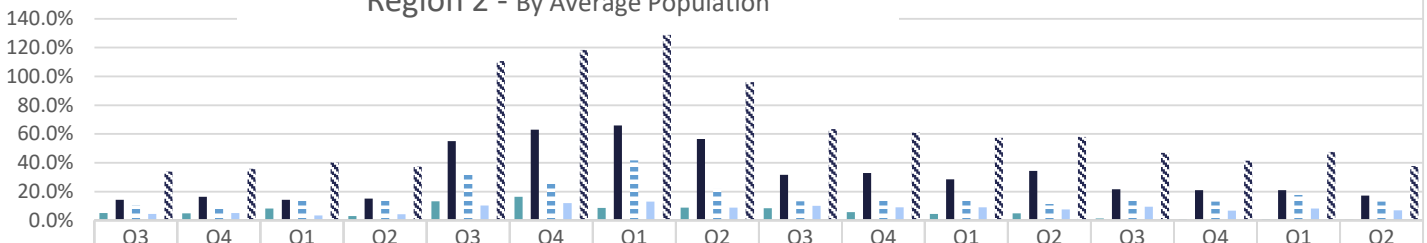
Specialty Clinic Diagnostic Tests & Procedures

Specialty Clinic Diagnostic Tests & Procedures Region 1 - By Average Population



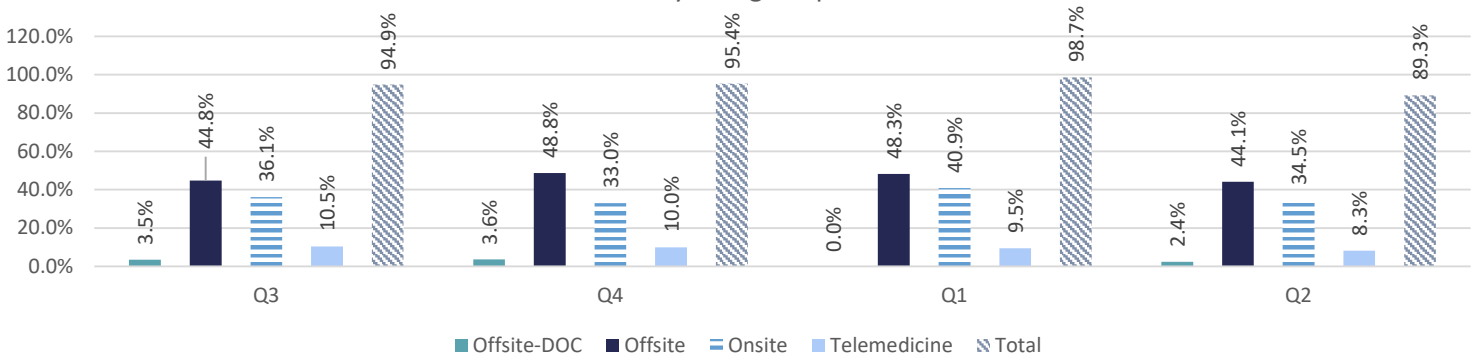
	DWCC				EHCC				LCIW				LSP			
Offsite-DOC	0.0%	0.0%	0.0%	0.0%	0.0%	0.0%	0.0%	0.0%	13.3%	14.0%	12.7%	15.8%	0.0%	0.0%	0.1%	0.1%
Offsite	99.8%	122.4%	124.7%	98.1%	58.1%	57.8%	57.4%	53.1%	85.7%	76.0%	88.9%	82.9%	40.2%	44.1%	40.9%	40.5%
Onsite	0.7%	0.0%	0.0%	0.0%	24.8%	27.5%	42.8%	41.1%	32.4%	28.2%	32.4%	22.4%	81.0%	73.0%	81.9%	72.4%
Telemedicine	0.8%	1.6%	0.9%	2.4%	17.1%	17.9%	14.9%	14.4%	20.4%	16.4%	19.3%	17.7%	11.6%	10.5%	9.5%	7.9%
Total	101.3%	124.0%	125.6%	100.5%	100.1%	103.1%	115.2%	108.5%	151.9%	134.6%	153.3%	138.8%	132.8%	127.6%	132.4%	120.9%

Specialty Clinic Diagnostic Tests & Procedures Region 2 - By Average Population



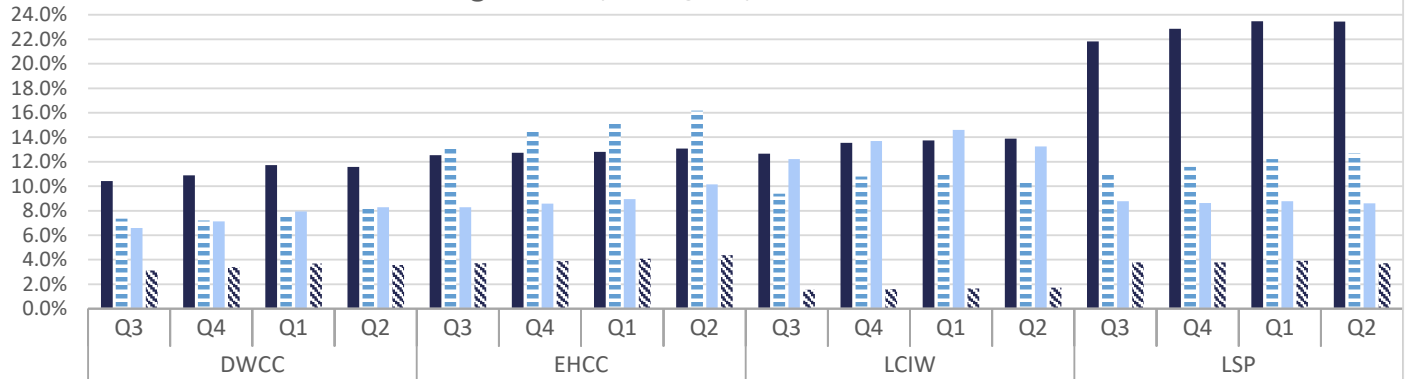
	ALC				DCI				RCC				RLCC			
Offsite-DOC	5.0%	4.9%	8.2%	2.9%	13.1%	16.4%	8.5%	8.8%	8.3%	5.8%	4.3%	4.9%	1.3%	0.7%	0.8%	0.5%
Offsite	14.2%	16.3%	14.2%	15.0%	55.1%	63.0%	65.8%	56.6%	31.7%	32.8%	28.5%	34.3%	21.6%	21.0%	21.0%	17.2%
Onsite	10.4%	9.4%	14.4%	15.1%	32.2%	27.1%	41.6%	21.7%	13.2%	13.4%	15.3%	11.2%	14.7%	12.9%	17.6%	13.1%
Telemedicine	4.4%	5.2%	3.4%	4.1%	10.3%	11.9%	12.9%	8.9%	10.1%	9.0%	9.1%	7.5%	9.4%	6.8%	8.1%	7.0%
Total	34.0%	35.8%	40.2%	37.2%	110.7%	118.3%	128.9%	96.0%	63.3%	61.0%	57.2%	57.9%	46.9%	41.4%	47.5%	37.8%

Specialty Clinic Diagnostic Tests & Procedures Total - By Average Population



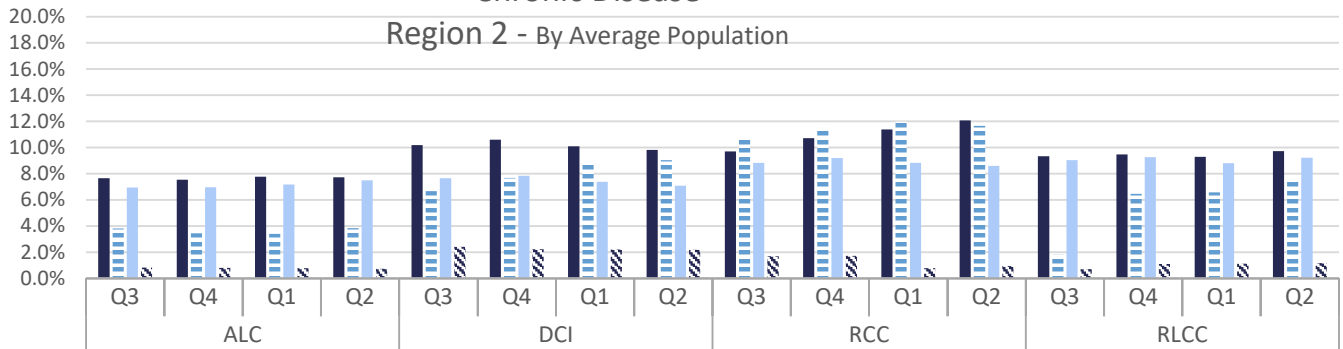
Chronic Disease

Chronic Disease Region 1 - By Average Population



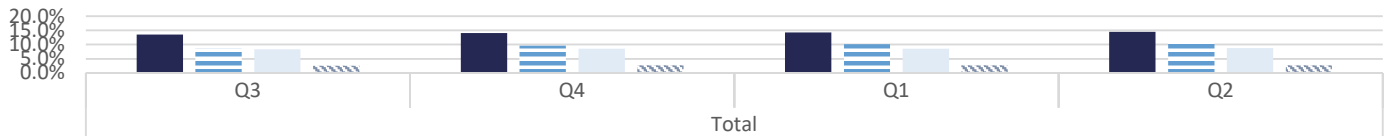
Diabetes	10.4%	10.9%	11.7%	11.6%	12.5%	12.7%	12.8%	13.1%	12.7%	13.5%	13.7%	13.9%	21.8%	22.9%	23.5%	23.5%
Heart Disease	7.3%	7.2%	7.6%	8.4%	13.2%	14.6%	15.1%	16.2%	9.4%	10.8%	11.2%	10.5%	11.2%	11.6%	12.2%	12.7%
COPD	6.6%	7.1%	7.9%	8.3%	8.3%	8.6%	8.9%	10.2%	12.2%	13.7%	14.6%	13.2%	8.8%	8.6%	8.8%	8.6%
Cancer	3.1%	3.4%	3.7%	3.6%	3.7%	3.9%	4.1%	4.4%	1.6%	1.6%	1.6%	1.7%	3.8%	3.8%	3.9%	3.7%

Chronic Disease Region 2 - By Average Population



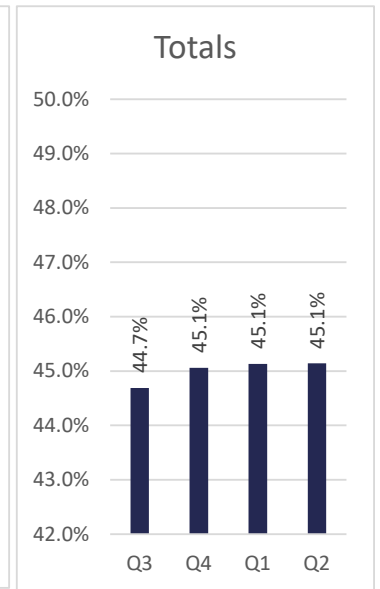
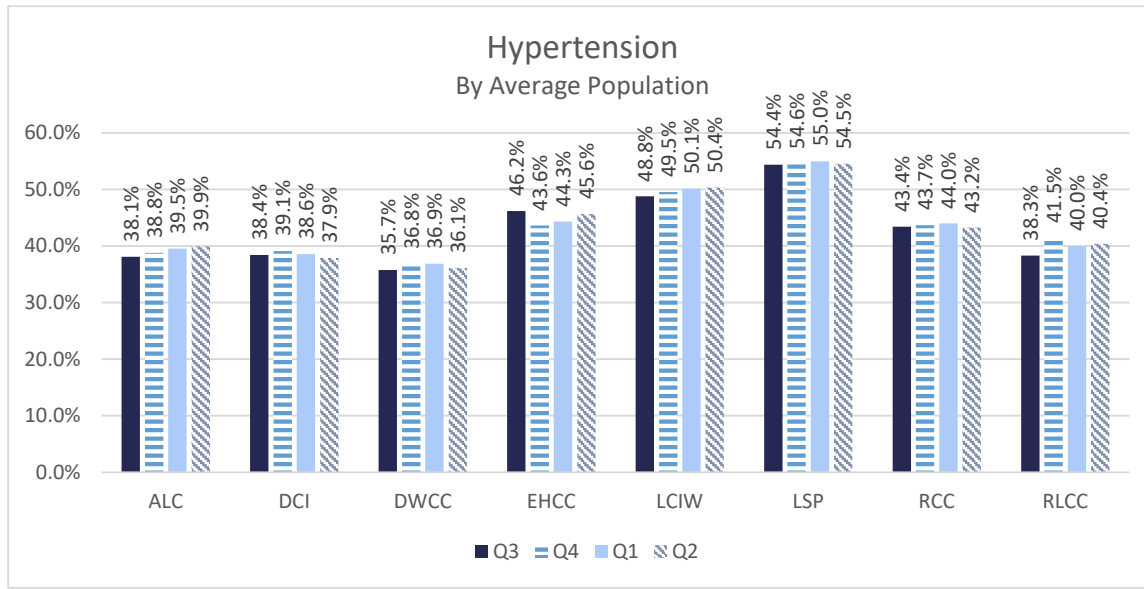
Diabetes	7.7%	7.5%	7.8%	7.7%	10.2%	10.6%	10.1%	9.8%	9.7%	10.7%	11.4%	12.1%	9.3%	9.5%	9.3%	9.7%
Heart Disease	3.8%	3.5%	3.4%	3.8%	6.7%	7.7%	8.7%	9.0%	10.9%	11.5%	12.0%	11.7%	1.8%	6.5%	6.6%	7.5%
COPD	6.9%	7.0%	7.2%	7.5%	7.7%	7.8%	7.4%	7.1%	8.8%	9.2%	8.8%	8.6%	9.0%	9.3%	8.8%	9.2%
Cancer	0.8%	0.8%	0.8%	0.7%	2.4%	2.2%	2.2%	2.2%	1.7%	1.7%	0.8%	0.9%	0.7%	1.1%	1.1%	1.2%

Chronic Disease Total- By Average Population

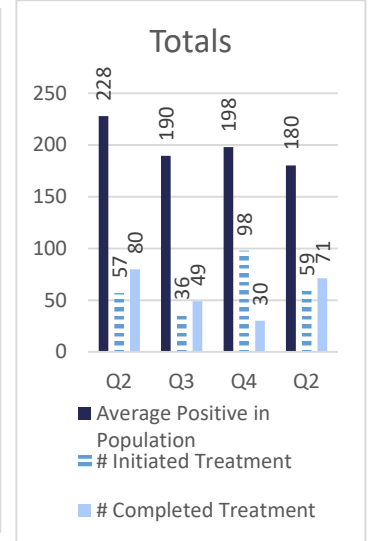
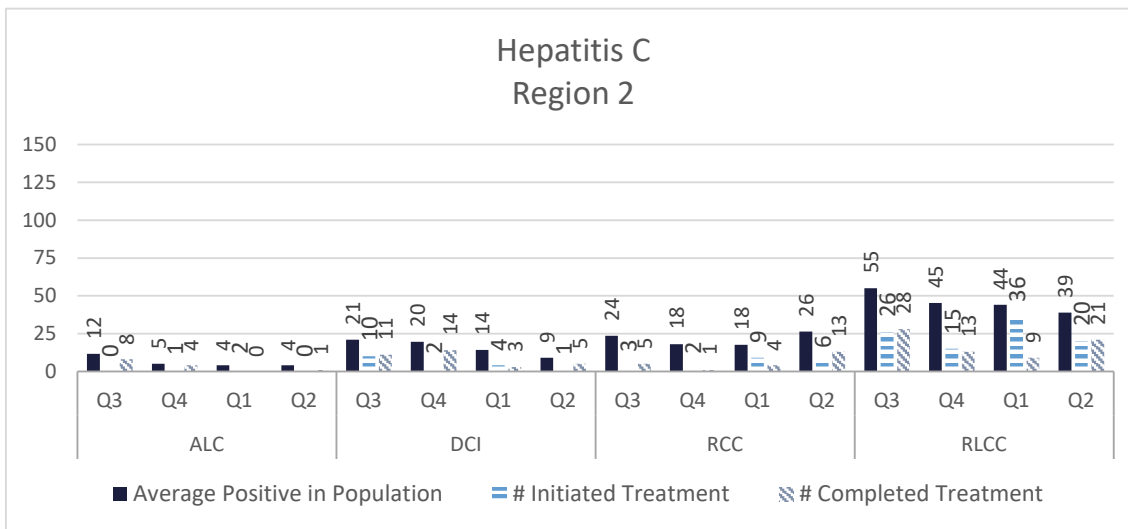
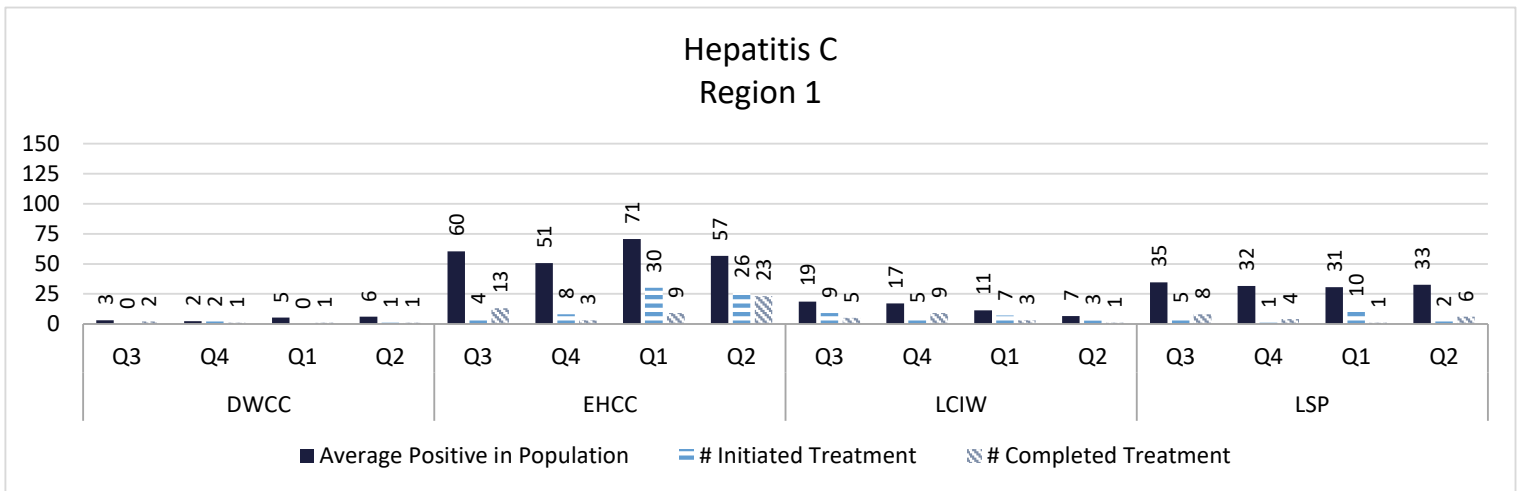


	Q3	Q4	Q1	Q2
Diabetes	13.5%	14.1%	14.3%	14.5%
Heart Disease	8.5%	9.6%	10.1%	10.7%
COPD	8.4%	8.5%	8.6%	8.7%
Cancer	2.6%	2.6%	2.6%	2.6%

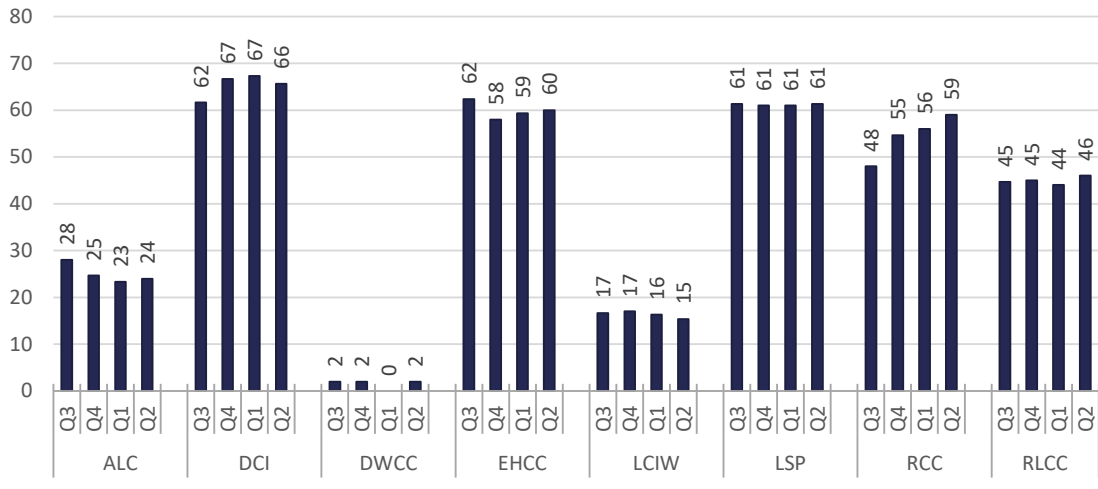
■ Diabetes ■ Heart Disease ■ COPD ■ Cancer



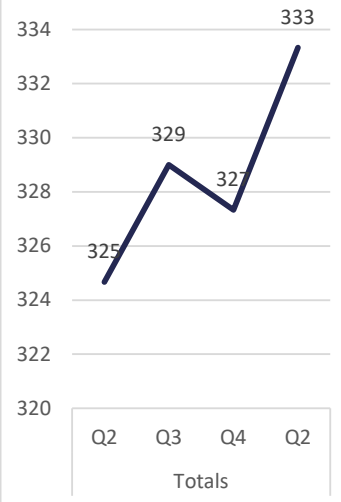
Communicable Disease



Average Positive HIV in Population

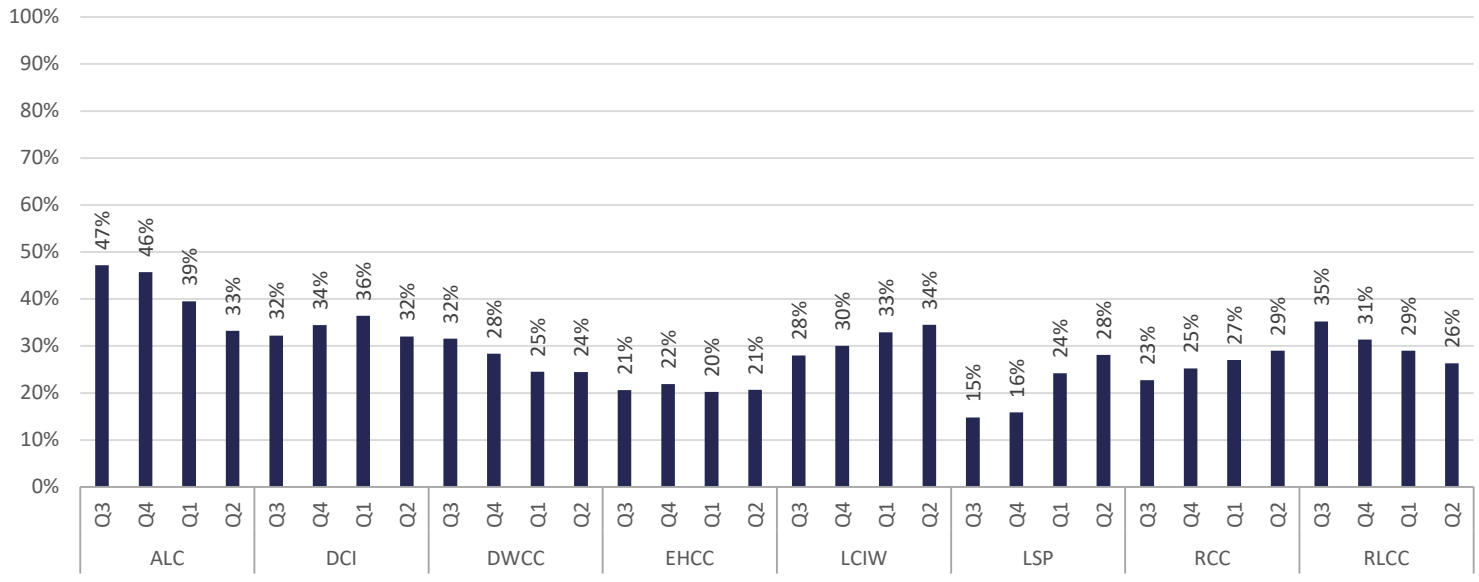


Totals

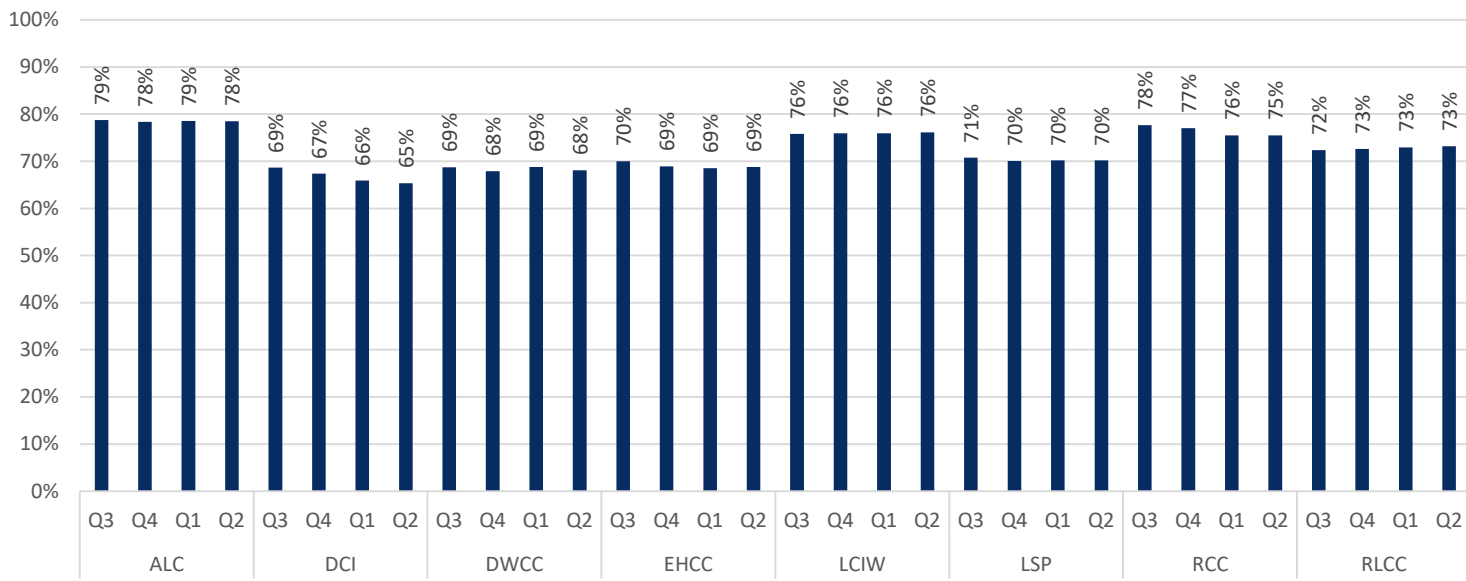


Behavioral Health

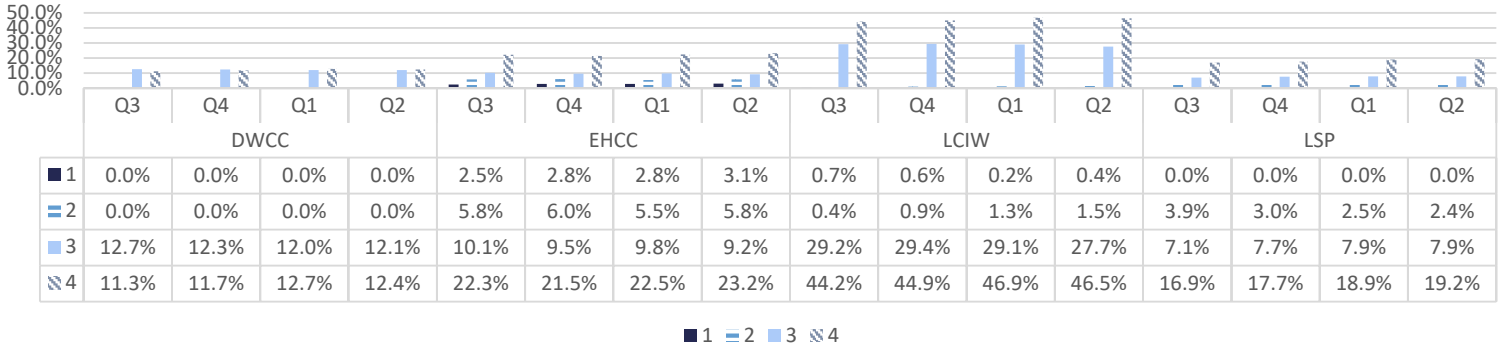
Percentage of Offenders Diagnosed with SUD on Programming Waitlist



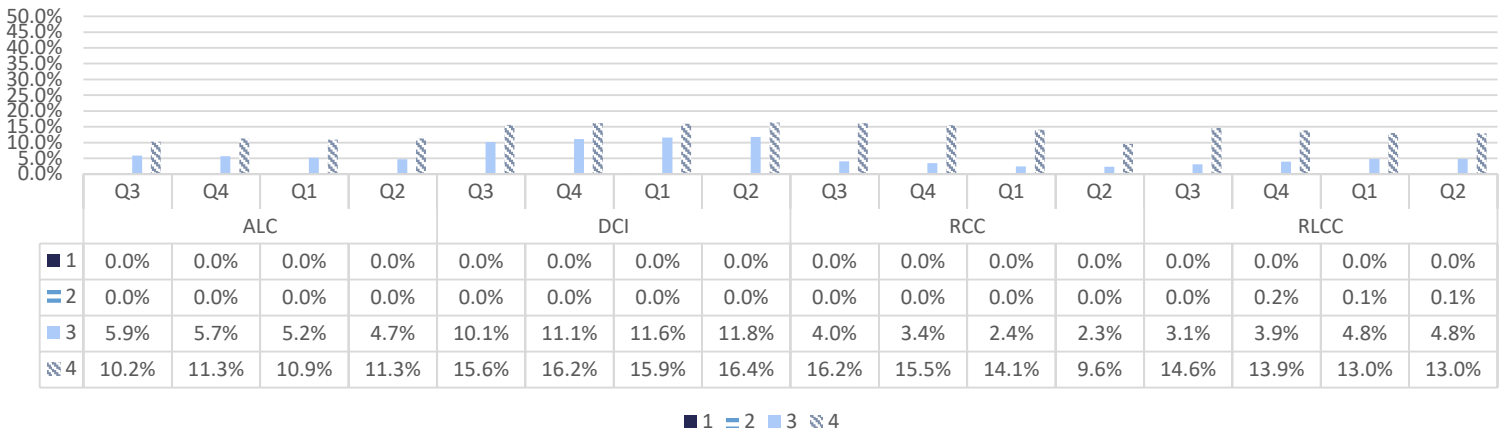
Percentage of Offenders in Population Diagnosed with SUD



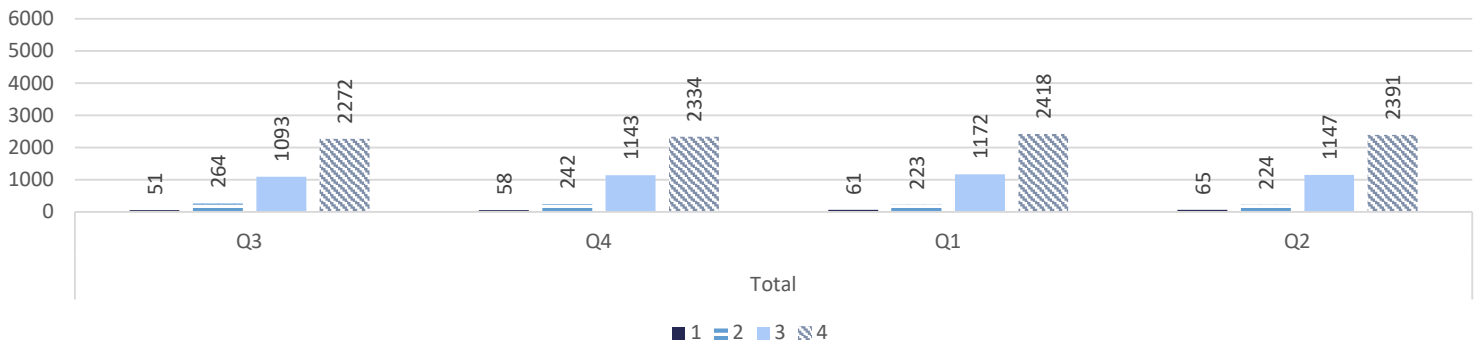
Mental Health Level of Care Region 1 - By Average Population



Mental Health Level of Care Region 2 - By Average Population

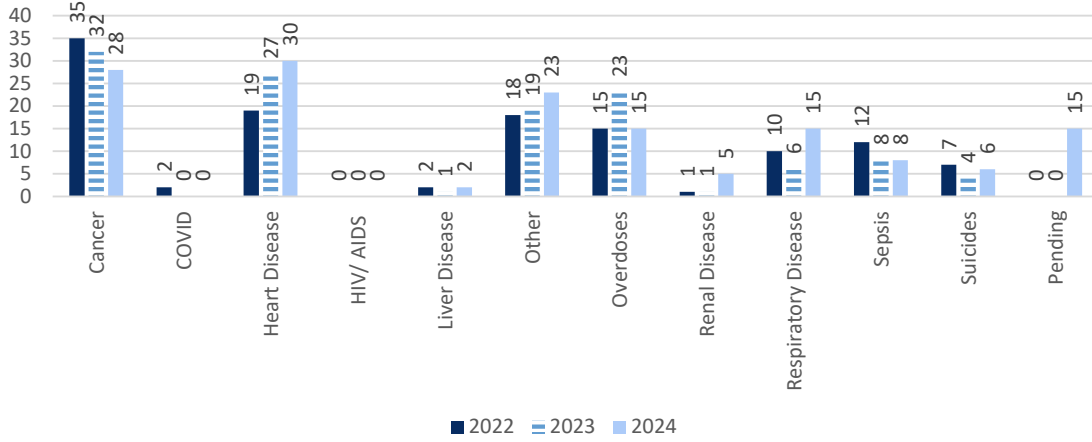


Mental Health Level of Care

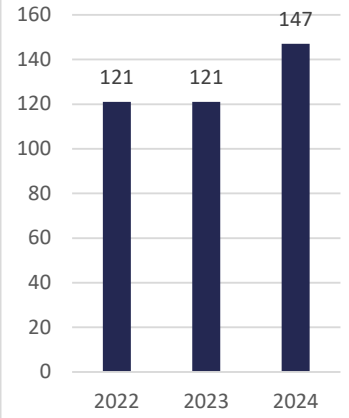


Deaths

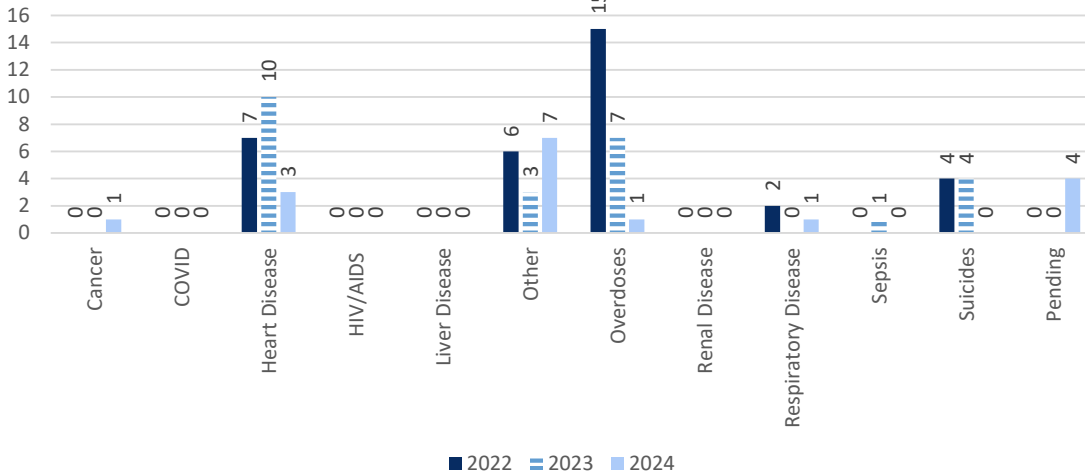
Annual Deaths in State Facilities



State Facilities Totals



Annual Deaths in Local Facilities



Local Facilities Total

